



Welsh School of Pharmacy
Undergraduate Degree Programme



The large low-relief sculptured figures over the entrance of the School are the work of F. Bainbridge Copnall F.R.B.S., and represent the figure of knowledge teaching the students of the world. It is the only low-relief mural in the City of Cardiff and symbolises the four departments that occupied the building at its opening in 1961 - Pharmacy, Navigation, Chemistry and Biology.



An introduction to... the Welsh School of Pharmacy

Excellent Teaching

The Welsh School of Pharmacy has an international reputation for all of its activities. In the most recent external assessment of teaching in UK Pharmacy schools, the School was awarded the highest designation, "Excellent". You will be taught in a stimulating environment, benefiting from interaction with researchers working at the frontiers of knowledge in their subjects and with teacher-practitioners at the leading edge of healthcare practice.

Support to Succeed

Except for short placements in Pharmacy practice, our Pharmacy degree is taught within the School's own building by members of its own academic staff. Throughout your time with us you will have access to the support of a personal tutor, drawn from the academic staff. All personal tutors have a deputy who can be contacted if the main tutor is away from the School. In recent years, around 80% of our students have graduated with either a First Class or an Upper Second Class Honours degree, validated by four external examiners from other Pharmacy schools.

Outstanding Facilities

The School is based in the Redwood Building on the University's Cathays Park campus. This striking, stone-faced building has outstanding facilities, with many of its laboratories and other rooms recently refurbished and housing sophisticated modern equipment. Each of the main specialities in the School has its own dedicated teaching laboratory; four in all. Computer workstations are numerous, for work on general applications, computer-aided learning and on-line access to the library catalogue, databases and journals. The Bute library which serves Pharmacy staff and students is only 100 metres away.

Beyond Work

The Pharmacy student population, drawn from the UK and around the world, is ethnically and culturally diverse. The School is encouraging and supportive of this diversity and also promotes extra-curricular activity by its students. Wednesday afternoons are reserved for such activities. A main focus for students sporting and social activities is the Welsh Pharmaceutical Students Association, which is run by students for students. The Association organises parties, social evenings and sporting and conference trips. Such activities add to the friendly atmosphere within the School.

Outstanding Research

Staff of the School are undertaking research which makes a difference to drug treatment and healthcare around the world. For instance, a drug molecule which was first synthesised and developed in our laboratories, is now in phase 2 clinical trials in the USA. Similarly, other colleagues are investigating the use of microneedle devices to administer the flu vaccine worldwide. Our Pharmacy degree programme has a major element of independent, supervised project work, giving you direct exposure to "cutting edge" research.

Bright Prospects

Our graduates occupy key positions in NHS hospitals and hospitals overseas, in healthcare retailers such as Boots-UK, Lloyds Pharmacy Group, the Co-operative Pharmacy, and in allied scientific and healthcare enterprises. The School has good links with these and other Pharmacy employers. For many years all of our graduates have obtained preregistration training positions, building on the firm foundation of our respected Pharmacy degree.

Professional Recognition

Study for our Pharmacy degree is full-time for four years. The award is a Master of Pharmacy. It is accredited by the Royal Pharmaceutical Society of Great Britain (RPSGB) as a recognised route of entry to the profession of Pharmacy. Subsequent to the degree, graduates go on to pre-registration training in Pharmacy practice for a year, undergoing continuous assessment by a practice tutor and undertaking the RPSGB's registration examination. Cardiff graduates perform excellently in these assessments. Pharmacist registration in the UK is recognised throughout the EU and in a number of other countries.

Contents

- 3 Welcome
- 4 Cardiff: the City
- 6 Cardiff: the University
- 8 Accommodation
- 9 Student Life
- 10 The Welsh School of Pharmacy
- 11 Studying Pharmacy in Cardiff
- 12 Master of Pharmacy
- 14 Becoming a Pharmacist
- 15 Careers in Pharmacy
- 15 Research
- 15 Higher Degrees
- 16 Admissions



Welcome

Which subject you study for your degree and where you study for it are major life decisions. Clearly, you are sufficiently interested in Pharmacy as a subject or as a future career to have picked up, opened this booklet and begun reading. Should you be interested in the chemical and biological sciences and have thoughts of a career in or related to healthcare, then most definitely you are right to consider Pharmacy. The science and use of medicines – and that is what Pharmacy is – has long been vital in societies around the world and now is a time of particular progress, especially in the UK.

Many pharmacists are now qualified to prescribe within the UK National Health Service (the NHS), a significant advance from their foundation role of the sale or supply of medicines and advice about their use. Particularly in NHS hospitals but also in the community, pharmacists are now fully integrated and valued members of the healthcare team. Increasingly, our Pharmacy curriculum in Cardiff reflects this and other new clinical roles in the NHS. It also retains the unique science-base of the subject, which can be the springboard for a career in many parts of the pharmaceutical and related industries. Furthermore, in every generation of Pharmacy students some are so enthused by the subject for its own sake that they will embark on a research career, either within the UK or elsewhere in the world. Cardiff is internationally recognised for its world-leading research.

Why pick the Welsh School of Pharmacy as the place you are going to study Pharmacy? You can find many good reasons elsewhere in this booklet. I would focus on two: firstly, we are a highly regarded School, rated “Excellent” in national assessments of our teaching and research, and secondly, we invest as extensively in teaching as any Pharmacy school in the UK; in the accommodation, the equipment and most importantly, in our staff.

Equally important to the student experience are opportunities to participate in the wide range of sporting, cultural, community-support and social activities at Cardiff. My colleagues and I encourage our students to immerse themselves in such extra-curricular activities as well as the MPharm course. Your undergraduate days are special and we hope you can make the most of them in every way.



Professor Stephen Denyer
Head of School

Cardiff: the City

Cardiff is one of Europe's youngest capital cities. Compact, green, friendly and full of life, it provides a first-class environment in which to live and study.

As the capital city of Wales, Cardiff has an impressive range of leisure, sporting and cultural amenities. Many of the facilities are of international standard. The city boasts world-class concert venues in the International Arena and St David's Hall, and is the focus of national and international sports events at the Millennium Stadium.

Culturally, Cardiff is well catered for, with the National Museum Cardiff, several theatres covering a wide range of tastes and the historic Cardiff Castle. The city also boasts a vibrant shopping centre, numerous cinemas and restaurants, great pubs and music venues. The development of Cardiff Bay is a major attraction and is home to the National Assembly for Wales and the impressive Wales Millennium Centre.

Cardiff Bay, the city's waterfront

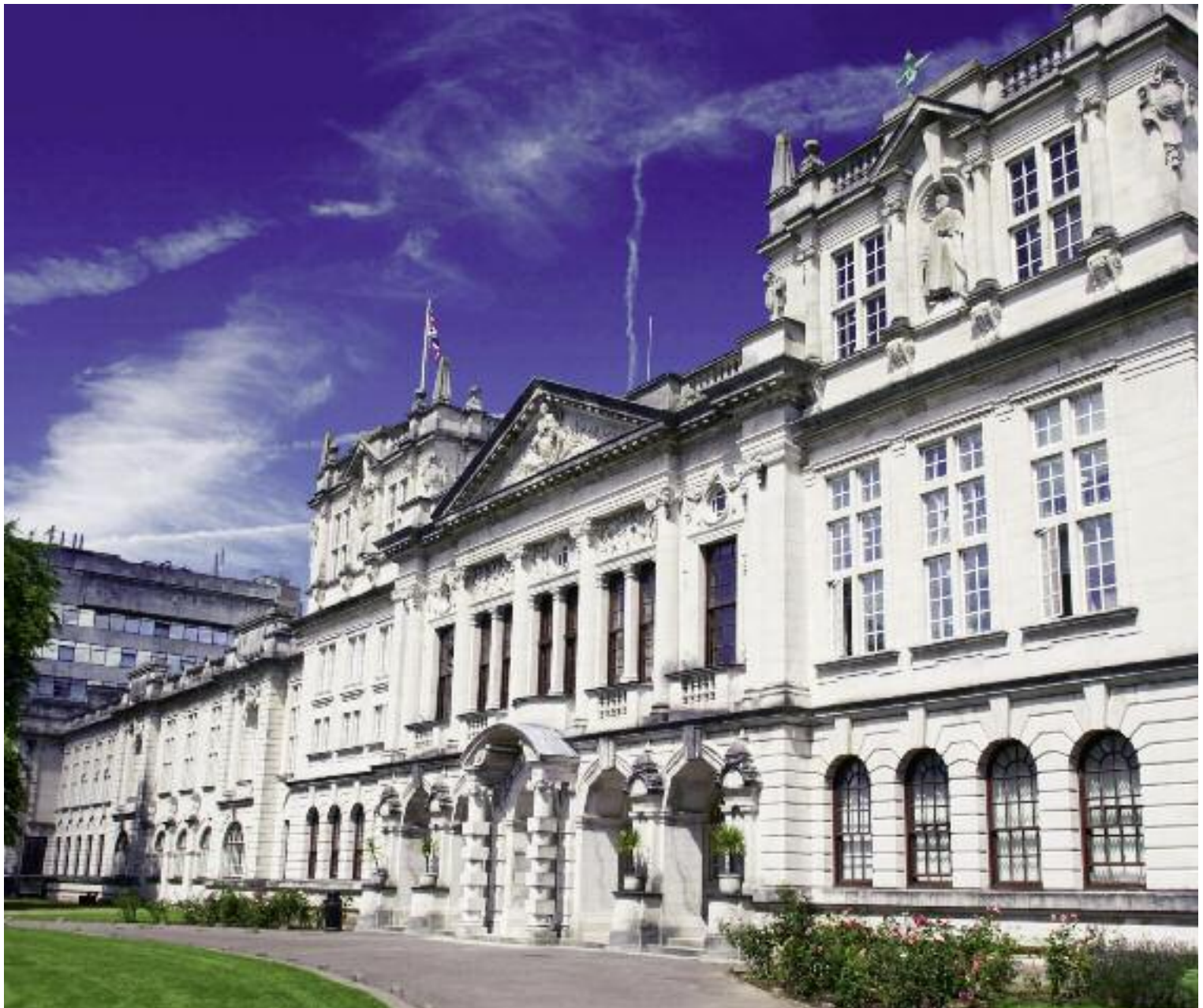


Cardiff: the University

Cardiff University is recognised in independent government assessments as one of Britain's leading teaching and research universities. Founded by Royal Charter in 1883, the University today combines impressive modern facilities and a dynamic approach to teaching and research with its proud heritage of service and achievement. The University's breadth of expertise encompasses: the humanities; the natural, physical, health, life and social sciences; engineering and technology.

The University has an outstanding location amidst the parks, Portland stone buildings and tree-lined avenues that form the city's elegant civic centre. Unusually for a civic university, most of the University's student residential accommodation is within easy walking distance of lecture theatres, libraries and the Students' Union, saving you time and money. More than £200 million has been invested in the university estate in recent years to provide new and refurbished facilities of the highest quality.

The University's Main Building





Cardiff is a member of the Russell Group of Britain's leading research universities. This creates a stimulating environment for teaching, ensuring that you are exposed to the very latest thinking and that the most modern technology and equipment is available. Teaching at Cardiff has been independently assessed as being of an excellent standard. The Quality Assurance Agency for Higher Education, which undertakes assessments with all UK universities, confirmed that prospective students, parents, teachers and graduate employers can have every confidence in the quality and standards of Cardiff's awards. Feedback in the recent National Student Surveys has also been very positive.

The student population is drawn from a variety of backgrounds, with students attracted from throughout Wales, the rest of the UK and world-wide. The University currently has around 25,000 undergraduate and postgraduate students and there is an almost equal balance between male and female students. International students comprise some 17% of the total student population. Government performance indicators show that students at Cardiff are more likely to succeed in their studies than students at most other UK universities. Currently, 95% of students successfully complete or transfer, better than many similar universities and better than the UK national average.



"With a strong academic reputation and excellent facilities, Cardiff continues to go from strength to strength."

The Guardian University Guide

"Cardiff is surely one of the best deals going: tip-top academically, still not the hardest to get into and a fantastic extra-curricular scene. There's no excuse to leave with just a degree listed on your CV."

The Virgin Alternative Guide to British Universities

"Cardiff has established itself as the front runner in Welsh higher education . . . it is a match for most rivals in teaching and research and the overall performance is amongst the best in Britain."

The Times Good University Guide



Students have access to the latest IT facilities



Cardiff has a relaxed and friendly atmosphere



More online at:

www.cardiff.ac.uk/residences

Accommodation

Cardiff has always attached great importance to the provision of student accommodation and has invested heavily in recent years to provide some of the highest quality residences in the UK university sector. Most of the accommodation is located close to the academic buildings. All first year undergraduates (who apply during the normal admissions cycle) are guaranteed a place in university accommodation. There is a choice of catered or self-catered residences.

New residences have been built in recent years and many of the older ones have been refurbished to a high standard. The majority of the 5,300 study bedrooms have en-suite shower and toilet facilities and all halls of residence have computer network connection points.

Accepting an offer of a place at Cardiff University on a firm basis and completing your online Accommodation Request Form promptly increases the chances of your accommodation preferences being met. Full details of all University-owned accommodation are provided in the University Residences Guide.

Besides managing University property, the Residences Office maintains close links with the private sector and provides assistance to students seeking to rent or share houses or flats.

“Guaranteed accommodation in halls and houses for first years. Very high quality and relatively cheap.”

Equitable Student Book

Talybont Court, the University's newest residence



A typical study bedroom



There is a range of catered and self-catered accommodation available



More online at:

www.cardiffstudents.com

www.wpsaonline.co.uk

Student Life

As a fast developing capital city, Cardiff is a great place to be a student. It's large enough to offer you an exciting variety of activities and entertainment, but small enough for you to feel comfortable in.

The Students' Union

Cardiff Students' Union is one of the biggest, best and most active in Britain. Solus, the Great Hall and the Taf are among the Union's major attractions. Solus is the students' own high quality nightclub, and is the second largest in South Wales. The Great Hall is a 1,500 capacity venue for major concerts and the Taf Bar is the Union's very own 'local'. Other facilities include CF10, a café offering a variety of hot and cold food, a general shop and off licence, University bookshop, computer shop, a games room and video arcade, five full size snooker tables and twelve pool tables, satellite TV, banking and insurance services. The Union also has its own letting agency and Student Advice centre. It is also home to Xpress Radio (the students' own radio station), an award-winning student newspaper, and more than 150 cultural, political, religious, social and sporting societies.

Welsh Pharmaceutical Students' Association (WPSA)

WPSA is the official society for Pharmacy students in the Welsh School of Pharmacy. Affiliated to BPSA, the British Pharmaceutical Students' Association, it provides a focus for networking through social and sporting activities during the academic year.

Jobshop

The Unistaff Jobshop is a student employment service that provides casual, clerical and catering jobs around the University to hundreds of students.



WPSA organises the big brother/sister scheme, whereby new students are allocated a 'buddy' from the 2nd or 3rd year who helps to introduce them to life in the school

Solus nightclub, the Union's state-of-the-art nightclub



The University has three sports centres

"Cardiff Students' Union is the biggest and best equipped in Britain."

The Independent

"Cardiff Students' Union is independently recognised as the biggest and best in Britain."

Equitable Student Book

"The Students' Union provides an excellent range of facilities, clubs and societies."

The Times Good University Guide

The Welsh School of Pharmacy

The Welsh School of Pharmacy is one of twenty six UK schools of Pharmacy and the only one in Wales. For nearly a century, the School has cultivated a strong tradition of innovative pharmaceutical education, scientific research and service to the Pharmacy profession, especially in Wales.

Judged by recognised standards, the School is one of the top UK schools of Pharmacy. Our research output is considered to be predominantly of international standing. We were awarded an excellent for the quality of our teaching and learning in the last Teaching Quality Assessment, and Pharmacy teaching at Cardiff frequently features at or near the top of national league tables of excellence from year to year.

The School is housed in the Redwood Building, named after Theophilus Redwood, who was the first Professor of Pharmacy in Britain from, 1842 until 1885, and one of the most eminent pharmacists of all time.

There are over 40 members of full-time staff and a very active undergraduate student organisation, WPSA - the Welsh Pharmacy Students' Association, as well as a Society for postgraduate students.

The School houses the Welsh Centre for Pharmacy Professional Education (WCPPE) which provides continuing education opportunities as well as facilitation on Continuing Professional Development (CPD) to the 3400 pharmacists and pharmacy technicians who work in Wales. WCPPE is thus the cornerstone of the School's service to the profession in Wales.

Pharmacy graduates in July 2009



Studying Pharmacy in Cardiff

What will it be like?

What will it be like studying Pharmacy in Cardiff? The answer to that question comes in several parts. First there is the feel of the place; not just the physical environment but also the sense of the place. Ours is a long-established School of Pharmacy. It opened in 1919 and has developed and expanded continuously since then. Our students tell us that they are aware and proud of this heritage and are determined to be a credit to the School and the generations of Pharmacy graduates who have gone before them, as much as to themselves. Our School today is at the forefront of pharmaceutical science and developments in Pharmacy practice and its graduates are among the best-prepared in the world for their exciting future careers in healthcare, in research, in the pharmaceutical industry and in closely-related fields.

Teaching, Learning and Assessment

As you progress through your degree we will raise your expectations of the depth and breadth of your studies. Our overall objective is to encourage you to become an independent learner, able to undertake and understand new challenges in the use of medicines and in healthcare, and to respond to them effectively. You can expect the teaching staff to help you achieve this independence. We cannot learn for you, but it is our responsibility to help you learn.

You will be taught, learn and assessed through a combination of lectures, practical classes, workshops, practice placements and seminars, complemented by individual and group assignments and, of course, your own private study. Study will become more demanding as you progress. Teaching is organised in modules, over two semesters (Autumn: 14 weeks and Spring: 17 weeks) in each of which there are 11 teaching weeks; the remainder being reading or examination weeks. Christmas, Easter and summer vacations are not affected by the semester system. Our teaching is supported by a substantial reliance on web-based and other learning resources, to which you will have access throughout your studies. We make use of the Blackboard 'virtual learning environment' (see www.blackboard.com).

Your progress in each module will be assessed during and at the end of the semester(s) in which it is taught. Modules sometimes include formative assessments (assessments which do not count towards your module mark) which are intended to assist your understanding and to provide you and your tutors with an indication of your progress. Methods of summative assessment (assessments which count towards your module mark) are varied; essay assignments, multiple-choice question examinations, conventional written examinations, assessed presentations and practical/skills tests are all used as appropriate.

Our teaching is supported by a substantial reliance on web-based and other learning resources, to which you will have access throughout your studies.



Personal Tutor

The personal tutor system is a central part of student support within the Welsh School of Pharmacy. The role of the personal tutor is to monitor academic progress and to provide feedback and advice to tutees. Tutors also provide personal support, acting as the first point of contact and a gateway to the student support services provided by the University and the Students' Union. Each student is assigned a deputy as well as a main personal tutor, so that if the main tutor is unavailable – perhaps overseas at a scientific conference – they may see the deputy. The tutor system acts in parallel with the Welsh Pharmaceutical Students Association (WPSA) 'big brother/sister' scheme, wherein each Year 1 student is looked after by a student who is further on in the programme.

Personal Development Plan

Each student is supported to prepare and maintain a computer-generated personal development plan (PDP), incorporating a record of experience and achievement. The PDP helps the personal tutor to monitor the student's academic and extra-curricular achievements. It assists the student in preparing a CV and keeping it up-to-date and it assists the personal tutor in preparing references for summer jobs or post-graduation employment. Maintaining a PDP is also good preparation for keeping up-to-date and moving your career on once you are a pharmacist. Showing evidence of continuing professional development is a legal requirement upon healthcare professionals, including pharmacists.

Master of Pharmacy

Overview of the MPharm Programme

There are four themes within the MPharm programme: Chemistry, Drug Delivery, Pharmacology and Pharmacy Practice. What they are and some of the ways they fit together are as follows.

Chemistry is concerned with the molecular properties of drugs – the active ingredients within medicines. It addresses the synthesis of drugs, their reactivity with other molecules and the analysis of drugs. Chemistry in a Pharmacy context is overwhelmingly organic chemistry and is often specifically referred to as pharmaceutical or medicinal chemistry.

When the pharmacist has a safe and effective drug molecule, a significant challenge is to get the drug to the correct place in the body, at the correct concentration and for the proper duration of time for it to have its therapeutic effect, to cure or relieve the patient. This is where the Drug Delivery theme

comes in. The drug has to be incorporated with other ingredients (excipients) into a medicine. The medicine might be a tablet to be taken by mouth, it might be a cream to apply to the skin, or it could be a powder to be inhaled into the lungs. Drug Delivery is concerned with the design and manufacture of these and the various other types of medicines; injections, eye drops, mixtures, etc, to an appropriate quality standard.

Once the drug is delivered to its site of action in or on the body, there is the matter of how it works. Pharmacology is the study of the actions of drugs on living tissues. Obviously, for a Pharmacy course the main interest is how drugs work for their curative effects on human patients, but there is a sub-speciality in Pharmacy of veterinary pharmacy and some pharmacists make their careers in this niche sector. Pharmacology and closely related topics constitute approximately 40% of the total MPharm programme.

Pharmacy retains a substantial laboratory base for its teaching



At the heart of Pharmacology is the study of how drugs work at the molecular level, but it is also more than that. The Pharmacy student studies how the body works in health and disease (incorporating genetics, biochemistry, immunology, physiology, pathology and microbiology) to better understand how drugs have their therapeutic effects and are used with patients.

The completing theme of the MPharm programme is Pharmacy Practice, which comprises the clinical, social and legal aspects to Pharmacy. Pharmacy Practice is perhaps best thought of as the study and development of skills in the interaction of the pharmacist with doctors, nurses and other health professionals, non-professional carers (family and friends) and, most importantly patients themselves. Students learn to interpret and dispense prescriptions, to give advice on the use of medicines, to manage patients' conditions by the use of medicines sold from the pharmacy or, increasingly, prescribed by the pharmacist her/himself.

Just as important as the four individual subject themes of the MPharm programme is how they fit together, what we call inter-disciplinarity. The chemistry of a drug, its chemical properties, e.g. its solubility, has a profound effect on its delivery to its site of action in the body. Drug chemistry also influences the pharmacological actions of a drug. A change in a functional group on a drug molecule can greatly affect its potency or the nature and severity of its potential side effects. There is a very close interaction of drug delivery and pharmacology in the matter of how drugs are absorbed, distributed around the body, metabolised and eventually excreted. Understanding from pharmacology is useful, indeed vital, in Pharmacy Practice. From pharmacology one can anticipate, for example, interactions between drugs that a patient is taking, with beneficial or potentially problematic outcomes.

In the design of our programme and in the way that we teach we continually make and explain these connections. This inter-disciplinarity can be challenging, but for many students this is one of the things they want from or come to enjoy about studying Pharmacy with us.



You can see below the pattern of modules that make up our MPharm curriculum. Beyond Year 1, module marks will contribute to your degree classification; 20% from Year 2, 30% from Year 3 and 50% from the final year.

Year One

- Medicinal Chemistry
- Physical Pharmacy
- Pharmaceutical Microbiology and Immunology
- Cell Biology and Biochemistry
- Principles of Pharmacology
- Introduction to Pharmacy Practice

Year Two

- Drug Design and Synthesis
- Instrumental Analysis
- Formulation Science 1
- Drug Disposition
- Viscero-Thoracic Pharmacology
- Clinical and Professional Pharmacy

Year Three

- Optimisation of Drug Design
- Quality Assurance
- Formulation Science 2
- Autocoid, Endocrine and Immuno-Pharmacology
- Neuro-Pharmacology
- Optimisation of Pharmaceutical Care

Year Four

- Problem-Solving in Pharmaceutical Sciences
- Research Specialisation
- Pharmacy Research Project
- Problem-Solving in Pharmacy Practice

Your Working Week

We are sensitive to the ways students have been taught in secondary schools and colleges and will break you in gently to new ways of working, but we will also expect and help you to become more independent and self-directed in your learning as you progress through the course. Consequently, the pattern of teaching and support for learning is rather different between Year 1 and Year 4. By Year 4, you will spend less time being 'taught' and more time finding out for yourself, especially within your final year research project.

Becoming a Pharmacist

Pharmacy is the study of medicines and their use. Study of Pharmacy is usually as a basis for and on the route to qualification as a pharmacist. Consequently, the Pharmacy degree course is vocationally orientated. It is focused on the knowledge and skill needs of future pharmacists.

The Master of Pharmacy, (abbreviated MPharm) programme is of four years' duration. After gaining his or her MPharm degree, a Pharmacy student must undertake a year's pre-registration training in Pharmacy Practice, based in a hospital or community pharmacy (or sometimes a combination of the two) before becoming eligible for registration as a pharmacist with the Royal Pharmaceutical Society of Great Britain (RPSGB) the professional body for Pharmacy. Registration is subject to approval by the student's practice tutor and passing the RPSGB's registration examination. Most MPharm graduates have no difficulty achieving these requirements, certainly this is the case for Cardiff graduates.

In view of the vocational orientation of the MPharm degree, the RPSGB has introduced a new Student Code of Conduct and Fitness to Practice procedures in schools of Pharmacy,

for further information, see www.rpsgb.org.uk. These principles and procedures come into force in 2010. One consequence is that our students will be expected to undergo regular checks to establish that they are of good character. This may include Criminal Records Bureau (CRB) checks, or registration with the Independent Safeguarding Authority (ISA). Further information can be found on relevant websites at www.crb.gov.uk and www.isa.gov.org.uk. Failure to undergo such a check/registration may result in a student being unable to join or complete the course.

The RPSGB produces its own literature and has its own webpages devoted to the Code of Conduct, Fitness to Practice and pharmacist registration, covering what it means to be a Pharmacist and career opportunities in Pharmacy.

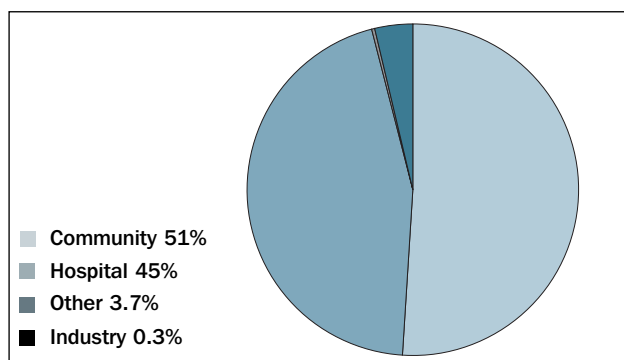
You can contact them by post or email at:

Royal Pharmaceutical Society of Great Britain,
1 Lambeth High Street,
London SE1 7JN
www.rpsgb.org.uk

The Pharmacy degree at Cardiff will equip you with the knowledge and skills you will need to embark on a career as a Pharmacist



Careers in Pharmacy



Employment destinations of Cardiff MPharm graduates.

The Pharmacy degree at Cardiff will equip you with the knowledge and skills you will need to embark on a career as a Pharmacist. Hospitals, community pharmacies and the pharmaceutical industry all provide employment opportunities. You will be given assistance in finding a pre-registration post and, at the present time, graduates of the School have little difficulty in finding a suitable post. The pie chart shows the early career destinations of Cardiff Pharmacy graduates over the last few years.

Research

The School has a strong reputation for the quality of the research that it conducts and attracts large research grants from a variety of sources. The research of the staff and postgraduate students leads to the publication in scientific journals of many articles each year. This also means that our teaching is at the forefront, with staff lecturing on subjects they are personally involved with developing.

The current research interests of the School are widespread and include the following areas:

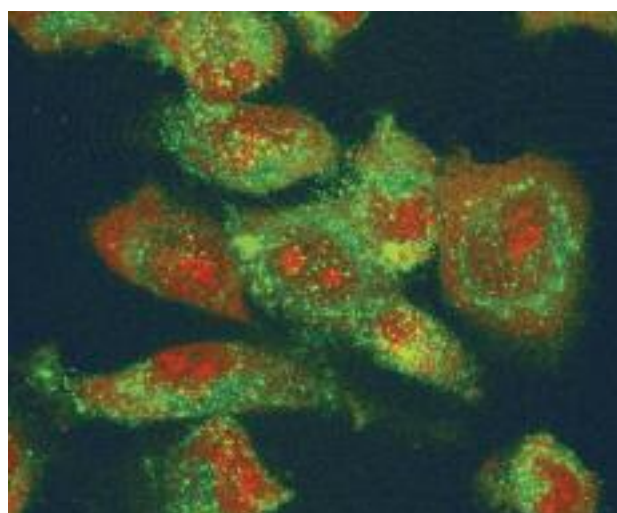
- **Medical Chemistry** – which includes synthetic medicinal chemistry to produce new anti-cancer and anti-infective drugs.
- **Drug Action** – which includes studies of cancer and heart disease, antimicrobials, asthma and Alzheimer's disease.
- **Drug Delivery** – which includes studies on transdermal absorption, the respiratory tract, oral formulations, nanotechnology and pharmacokinetics
- **Health and Medicines** – which includes drug use evaluation, drug safety, quality of life measures, pharmacoconomics and management of health and illness.

Higher Degrees

The School has about 60 students studying for MPhil and PhD qualifications by research and 200-plus students on postgraduate taught schemes. The taught programmes have been developed in collaboration with the pharmacy profession and the pharmaceutical industry to provide practitioners with expert knowledge and a range of new and updated skills.

Postgraduate taught courses include:

- Clinical Pharmacy
- Clinical Research
- Community Pharmacy
- Prescribing for Pharmacists and Nurses
- Pharmacoconomics and Health Economics





More online at:

www.cardiff.ac.uk

www.cardiff.ac.uk/opendays

www.ucas.com

www.cardiff.ac.uk/phrmy

Admissions

To be considered for a place to study at Cardiff you should apply online via the UCAS website using the 'UCAS Apply' facility at: www.ucas.ac.uk/apply. The website will provide you with the information on how to apply and explain the procedure. Applications should be completed by 15th January.

After we have received and considered your application, we may invite you to visit the School for an interview sometime during the period November to early March. This will include a guided tour of the School. Under normal circumstances, students will not receive an offer without an interview. If you are an international student we can conduct an interview by telephone. For some countries, including China (Hong Kong), Kenya and Malaysia, members of our staff sometimes undertake annual visits to promote our MPharm programme and to undertake interviews of applicants. You can contact us to ask about the dates of such visits.

Number of places available in the first year: 120

Typical number of applications: 1,000

Equal Opportunities

Cardiff University is committed to promoting equality and diversity in all of its practices and activities, including those relating to student recruitment, selection and admission. The University aims to establish an inclusive culture which welcomes and ensures equality of opportunity for applicants of all ages, ethnicities, disabilities, family structures, genders, nationalities, sexual orientations, races, religious or other beliefs, and socio-economic backgrounds. This commitment forms part of the Equality and Diversity Policy, which is available at:

www.cardiff.ac.uk/cocom/equalityanddiversity/index.html

Applicants with Disabilities/Specific Needs

All offers to study at Cardiff University are made solely on the basis of academic merit. Where applicants have specific requirements that relate to a disability or medical condition, they are encouraged to discuss these with relevant staff in order that appropriate arrangements can be made to ensure the University provides an accessible environment. Specifically, applicants are invited to contact the Disability Adviser who can provide information about the applications procedure, course delivery and access to the physical environment. Where appropriate, informal visits can be arranged in which applicants can view accommodation and meet academic staff.

The Disability Adviser can be contacted at:

Student Advisory Service
50 Park Place, Cardiff CF10 3AT
Tel/Minicom: +44 (0)29 2087 4844
Email: disability@cardiff.ac.uk

Open Day

A University-wide Open Day is held in April each year and provides the opportunity to visit all academic schools in addition to the residences, the Students' Union and sports facilities. The Welsh School of Pharmacy arranges laboratory demonstrations and talks during this event.

Entry Requirements

A-levels: ABB/BBB including Chemistry and at least one other science subject, preferably Biology, Mathematics or Physics. General Studies and Critical Thinking are not considered as a third A-level.

AS-levels: An A-level pass in Chemistry is required together with a second science A-level but two AS-level subjects will be considered in lieu of a third A-level; one AS-level must be of some relevance to Pharmacy.

GCSE: A biological subject or a double science award at grade B if biology has not been studied at A-level. Mathematics and English at grade A – C. At least a grade B is preferable.

Other: International students can find entry requirements for some non-UK qualifications on our website. Those offering alternative qualifications are considered and should contact the Pharmacy UG Admissions Student Office (see address on next page) by email or letter detailing their qualifications and experience.

Website

Details about the School can also be found at:

www.cardiff.ac.uk/phrmy

Notes for Welsh Language Applicants

We recognise that if you are a Welsh speaker you may feel more comfortable speaking to a Welsh speaking personal tutor. Provided there are Welsh speaking members of staff in your subject area, every effort will be made to allocate a Welsh speaker to you.

Some of the accommodation at Senghennydd Court student residence has been allocated for Welsh speakers and learners who would like to be grouped together. If you would like to take advantage of this please make a note of this on your accommodation form.



More online at:

www.cardiff.ac.uk/fees

www.cardiff.ac.uk/scholarships

www.direct.gov.uk

www.studentfinancewales.co.uk

Tuition Fees and Financial Assistance

The University charges an annual fee which covers all tuition fees, registration and examinations other than the re-taking of examinations by applicants not currently registered. Please note charges for accommodation in University Residences are additional.

UK/EU Students

Cardiff University will charge an annual fee of approximately £3,290 to all full-time students registering on undergraduate courses. However, you will be able to take out a non-income assessed tuition fee loan to cover some or all of these fees. After you graduate, you will begin to repay the loan once your income exceeds the repayment threshold (currently £15,000 per annum). Repayments would then be a minimum of 9% of the difference between the repayment threshold and your income.

Scholarships and Bursaries

Cardiff University will be offering a range of scholarships and bursaries for students starting their studies in 2010. For more information please visit the following website: www.cardiff.ac.uk/scholarships

International Students

Tuition fees are reviewed annually and are usually released in February/March. Details will be published on the following website: www.cardiff.ac.uk/international

Alternatively you may contact the International Office, Tel: +44 (0)29 2087 4432 for more information.

Useful websites for information about tuition fees and financial assistance

Cardiff University website

www.cardiff.ac.uk/fees

Student Support Centre website

www.cardiff.ac.uk/financialsupport/index.html

DfES Student Support web pages

www.dfes.gov.uk/studentssupport/

Welsh Assembly Student Finance web pages

www.studentfinancewales.co.uk

Student Finance England

www.studentfinanceengland.co.uk

Student Loans Company

www.slc.co.uk

Important information. Please read carefully.

The University offers the information contained in this brochure as a guide only. It does not constitute a contract and is not binding on prospective students, students or the University. While the University makes every effort to check the accuracy of the factual content at the time of publication, some changes will inevitably occur in the interval between publication and the academic year to which the brochure relates (Entry 2010). For example, courses, entry requirements and typical offers may have changed in line with market and student demand, and research development. Applicants should not therefore rely solely on this brochure and should visit the University website (www.cardiff.ac.uk) for up-to-date information concerning course content, accreditation, and entry requirements for the relevant academic year when considering applying to the University.

5000PHRMY1109



This brochure is printed on paper sourced from sustainably managed sources using vegetable-based inks. Both the paper used in the production of this brochure and the manufacturing process are FSC certified. The printers are also accredited to ISO14001, the internationally recognised environmental standard.

When you have finished with this brochure it can be recycled, but please consider passing it onto a friend or leaving it in your careers library for others to use.

Thank you.

For further information contact:

UG Admissions Student Office
Welsh School of Pharmacy
Cardiff University
King Edward VII Avenue
Cathays Park
Cardiff CF10 3NB



Welsh School of Pharmacy

Redwood Building, King Edward VII Avenue, Cardiff CF10 3NB

Tel: +44 (0)29 2087 4080

Fax: +44 (0)29 2087 4149

Email: pharmacy-ug@cardiff.ac.uk

www.cardiff.ac.uk/phrmy