



School of **Geography and Planning**

Undergraduate Degree Programmes

www.cardiff.ac.uk/geography-planning

Join us and make a difference 3

Challenging, provocative
and transformative 4

Fast-track your future 6

Our degree programmes 8

Meet the experts 12

Generating debate
and influencing policy 14

Applications 17

14th in the UK for Town
and Country Planning
and Landscape Design.

Source: The Times Good University Guide 2023

Top 100 in the world
for Geography.

Source: QS World University Rankings by
Subject 2023

98% of graduates

in employment and/or further
study, due to start a new
job or course, or doing other
activities such as travelling,
15 months after the end of
their course.*

Accelerate your career – all programmes are
available with a professional placement year.

*Source: Higher Education Statistics Agency, latest Graduate Outcomes Survey 2019/20, published by HESA in June 2022. Contains HESA Data: Copyright Higher Education Statistics Agency Limited 2022. The Higher Education Statistics Agency Limited cannot accept responsibility for any inferences or conclusions derived by third parties from its data.

Join us and make a difference

There has never been a more important time to study the subjects of human geography and planning. They hold the key to our future.

Human geography focuses on understanding how different places are affected by global issues such as climate change, sustainable development, inequality, and social injustice. It also develops key skills in demand by employers, including the ability to undertake research and data analysis, to think critically, and to debate key environmental and social issues. It is critical to making sense of our planet and our future prosperity and sustainability.

And planning is a forward-thinking and practical field of study which actively influences the sustainability of our towns, cities and countryside. Planners shape the environments within which people live, work and travel, and work closely with politicians, developers and communities to respond to sustainability challenges and improve the quality of places. Good urban planning creates practical possibilities for shaping places fit for the future.

Here at Cardiff University, our teaching of human geography and planning is underpinned by the knowledge gained from our agenda-setting research which not only embraces both these subject areas, but also actively influences sustainability and placemaking in practice.

Furthermore, our approach to teaching and research is shaped by our core values. We think critically and creatively; we work collaboratively and openly; we champion diversity; we take care of the environment; and we support placemaking which contributes positively to the wellbeing of future generations.

What this means is that you'll benefit from a learning environment which is dynamic, supportive and interactive and where your voice is heard. You'll experience programmes of study which enhance your employability, with all our undergraduate programmes being accredited (or partially accredited) or endorsed by the UK's

leading professional associations in the fields of geography and planning. You'll join an active and engaged community of staff and students where there are numerous events and activities to engage in discussions and work together. And you'll have the opportunity to participate in a range of exciting field study visits that will further develop your understanding of placemaking in practice.

So, if you're interested in how to make places better for the future, then come and see what we have to offer. Our vibrant, future-focused and diverse community is a place where I'm sure you will fulfil your ambitions and thrive.



Professor Gill Bristow
Head of School



Find out more

Challenging, provocative and transformative

We question the world we live in, searching for solutions
to transform people, places, and environments.

We're committed to protecting and growing the spaces that nurture us, improving the communities that shape us, developing the institutions that bind us, and influencing the people that lead us.

Who are we?

We work to empower the future of people and place, tackling the world's most challenging social, environmental, and economic issues.

We unite brilliant minds across human geography, urban planning, and design to consider the systems, policies, cultures, and behaviours that shape our society. Together with a transformative policy-facing agenda, our work results in lasting positive change, from reframing UN debates on sustainable housing to influencing European legislation on animal welfare.

If you join us, you'll become part of an invigorating and stimulating environment in which you can pursue your passions, advance your academic ambitions, and develop your professional profile and skills.

Our approach

We focus on the grand challenges faced by human societies and places in the 21st century. We'll enable and encourage you to apply critical thinking and practical knowledge to address the impacts of economic, social, political, and cultural change on the built and natural environment. You'll be empowered to question the status quo and think differently to effect real, positive, and lasting change. You'll be exposed to research-active academics working at the forefront of their subject areas which will allow you to pursue specialist interests in line with their expertise.



Connected

We have long-established relationships with professional bodies and industry partners. These links ensure we are part of the evolving conversations around geography and planning issues. All our undergraduate programmes are accredited (partially or fully) by the UK's leading learned societies or professional associations in the fields of geography, planning and surveying – Royal Geographical Society (RGS), Royal Town Planning Institute (RTPI) and the Royal Institution of Chartered Surveyors (RICS).

Recognising the importance of industry voices and practitioner experience, we regularly host events with external speakers to provide you with insights into links between academic ideas, policy, and practice. This is a great way to develop your industry and specialised knowledge while building your professional relationships. It is also an excellent forum for you to learn about a variety of careers and begin thinking about your ambitions.





Strengthened by diversity

When you join us, you'll become part of an international community, with staff and students from almost 30 countries including Australia, China, Iran, Pakistan, and the USA. This international and diverse outlook strengthens your learning experience and gives you the opportunity to participate in a truly global dialogue – discussing and debating programme themes and contemporary issues with peers who are informed and influenced by diverse cultural contexts and considerations.

Understanding and appreciating different cultures, customs and perspectives enriches our work and our lives. It is an excellent way to expand your thinking and broaden your frame of reference, enhancing your personal, professional, and academic development.

Equipped for success

We're based in the iconic, Grade 1-listed Glamorgan Building and much of our teaching is delivered here. Yet, while our home is historic, our facilities are fit for the 21st century with a wide range of modern lecture theatres, seminar rooms, design studios, and computer labs. The computer teaching facilities are fully supported by technical staff and are equipped with all packages relevant to your studies, including database management, computer-aided design, GIS, and statistical and graphical software.



Fast-track your future

We're deeply committed to helping you achieve your academic and professional ambitions. But how do you stand out in a competitive and global marketplace?

While our exciting, challenge-led curriculum and supportive learning environment will enable you to excel in your selected subject, we also recognise the importance of professional experience.

Increasingly, employers are looking for graduates who not only have specialist knowledge but also experience of applying this in the workplace. To help you compete in the global market, we provide a wide range of practical opportunities with this in mind.

Professional placement year

All our programmes are available with a professional placement year. You would take a salaried placement in your third year before returning to us for your fourth (final) year of study.

A year in industry enables you to develop your professional know-how and understanding before you graduate. You'll be able to practically apply your learning to a contemporary workplace setting, engaging in a range of activities and exercises that will build your confidence and competence.

Your placement provider will deliver a structured programme of work which contributes towards the professional experience requirements of the relevant accrediting professional body (RTPI and RICS), providing one of the minimum two years' professional experience for full membership*. You'll also complete a series of assignments that are aligned with the assessment of professional competence (APC) requirements of the professional bodies. Midway through the placement year, you'll return to the school to take part in a range of seminars and tutorials. Throughout your placement you will be supported by a school supervisor and have access to the full support services of the school and university.

*Relevant to the RTPI and RICS accredited programmes only

We'll help you to secure this salaried placement, but many students often source their placements directly with companies and organisations that are of interest to them and complement their career ambitions. Previous placement employers have been drawn from the private and public sectors, as well as in the third sector such as charitable trusts and campaigning organisations.

In-programme work experience

We recognise that not everyone will want to extend their degree programme to complete a professional placement year but will still be looking for real-world experience.

To achieve this, we've incorporated a short-term placement opportunity into the three-year Human Geography (BSc) and Human Geography and Planning (BSc) programmes through the Geographies of Work and Employability module. We'll support you in finding your placement, providing you with the opportunity to engage with the university's work experience team.

The Geographies of Work and Employability module also currently incorporates professional citizenship skills sessions

where you'll undertake exercises to help you nurture and develop key workplace skills such as team working, communication, fairness, recognition of diversity and corporate social responsibility.

We also recommend you participate in the Royal Geographical Society's Ambassadors Scheme, which recruits, trains and supports student geographers to act as ambassadors for geography in the classroom and beyond. This is a way of developing new skills and building your network within the geography discipline.

Studying in the field

We're committed to playing our part in addressing the grand challenges facing people and communities. Prime amongst these is the climate emergency, and we're mindful of the impact of our travel footprint and modes of travel. Our field study visits focus on UK locations. They reflect the excellent research undertaken by our staff and our passion for field and location-based study. Other forms of experiential learning and field analysis focus on topics and communities at local, national, and international levels.





Earn and learn

On-campus internships

This scheme offers work experience, paid on an hourly rate basis, for up to eight weeks – to take part in a summer placement within any of our academic schools, either on a research or learning and teaching project.

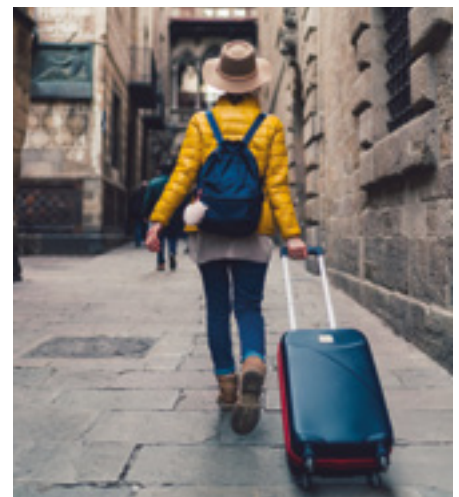
As well as giving you the opportunity to work on interesting and important projects, it will also benefit you by:

- enhancing your CV with demonstrable experience
- producing outputs which can be shared with potential employers
- building your confidence by working with others
- developing valuable employability skills (such as team working, prioritisation and managing workloads, working independently as required)

Studying abroad – opening doors and expanding horizons

Taking the opportunity to study abroad could provide you with some of your best university memories and lifelong friendships – not to mention how it can benefit you personally and professionally.

Graduates talk about the adventures they had, the cultures they discovered and the communities they formed. They also talk about the valuable skills they gained and the qualities they developed. From strong communication skills, flexibility and resilience to problem-solving and creative thinking; students return from studying abroad with increased confidence. All of which is valuable to their CV and helps them stand out in a competitive market.



Find out more

Our degree programmes

Human Geography (BSc)

UCAS Code: L700

From climate change and sustainable development to inequality and social justice, human geography is the study of global environmental, economic and social issues and their impact on people and places. Fundamentally, it's about where we live, how we live, and how we want to live.

Our world is complex, our lives complicated. Multidimensional social and political issues – local, national and global – stream across our television screens and social media. They have the power when misunderstood, or misrepresented, to pollute public discourse, breed division and undermine social cohesion.

Our programme provides you with the knowledge and critical understanding of the intricate relations between the natural and human world and an awareness of how places outside your everyday experience are created. You'll learn how to use your knowledge to shape the views and actions of elected decision-makers, the voluntary sector and industry, to improve society.

Together, we will explore geographical ideas and practice at various spatial scales, making connections between the local, regional, national and global levels. While the programme will emphasise the social, cultural, political, economic, development and environmental components of geography, it also includes a range of specialist modules which will enable you to pursue your own interests and passions.

Expansive education

We offer a diverse selection of optional modules to complement our core modules. Optional modules are reviewed regularly but recent areas of study have included: Sustainable Development; Social Geographies (Spaces of Inequality and Welfare); Development and the Global South; and Political Geography (Place, Space and Power).

Full module lists can be found on our website.



I would argue that human geography is unparalleled in its ability to offer interesting, challenging, and diverse topics of study.

On countless occasions it has changed my perspective of the world, the relations I have with others, and my ability to critically analyse arguments which are at the forefront of global discussion.

**Matthew Ellis,
Human Geography (BSc 2019)**



Human Geography and Planning (BSc)

UCAS Code: LK74

Explore the changing nature of spaces and places and learn how to help solve the major social and development issues affecting communities in the UK and globally.

Our programme combines the problem-solving approaches of planning with the topical insights of geography, equipping you with the skills, knowledge and confidence needed to tackle the challenges affecting how and where we live.

You'll examine the changing nature of spaces and places; the relationships between society, the environment, and space; and the role of actors involved, including the state. Placing local and national issues in a global context, we cover topics from environmental change in the UK, and economic and social change in Wales, to regional and international development.

You'll gain an understanding of global, national and local processes of change, key environmental, social, cultural, political and economic trends and the role that planning plays in shaping their effects on different places. Detailed case study work through field study visits and projects will give you an appreciation of multiple scales of spatial change.

Expansive education

We offer a diverse selection of optional modules to complement our core modules. Optional modules are reviewed regularly but recent areas of study have included: Digital Planning; Infrastructure; Society, Diversity and Planning; Urban Economies; and Sustainable Transport.

Full module lists can be found on our website.

The programme outline provided relates to the RTPI-accredited pathway. The programme can also be taken on a non-accredited pathway which involves a different selection of module combinations. Further information is available on our website.



I loved studying geography at A-level and knew that I wanted to continue to study it at university, but I was also interested in planning.

There's such a range of modules on offer. I've particularly enjoyed the Sustainable Transport, Places and Plans and Liveable Cities modules. They all contained different assignment possibilities such as videos and posters, offered a broad range of topics, as well as the opportunity to collect your own research.

**Sophie Jones,
Human Geography
and Planning (BSc 2019)**

Urban Planning and Development (BSc)

UCAS Code: K490

Working closely with politicians, developers and communities, planning as a discipline shapes the urban and rural environments where people live, work and travel, responding to the challenges faced in these areas to create vibrant, sustainable spaces that last.

The social, economic and environmental challenges of creating better places in which to live and work are amongst some of the most pressing that we face today. Our programme will provide you with the knowledge, tools, and confidence to transform policy and practice to overcome those challenges.

Planning impacts our everyday reality in so many ways, influencing the homes in which we live and the quality and availability of opportunities which can support our health, wealth, and collective well-being. It can affect our public and community spaces and our professional and leisure spaces, as well as how we travel and move between them. You'll examine how and why places, such as cities, towns, and the countryside, change and how they can be improved through planning practice and research.

This programme opens a wide range of exciting career opportunities in planning, development, and surveying. Our graduates have an excellent track record of securing employment in these

sectors as well as transport, economic development, environmental policy, housing, and urban regeneration.

With modules that draw on the ideas of leaders and experts from the world of practice, you'll also have the opportunity to understand how your learning applies to the real world and consider the ways in which you can develop your professional profile and employability.

Expansive education

We offer a diverse selection of optional modules to complement our core modules. Optional modules are reviewed regularly but recent areas of study have included: Urban Economies; Property, Urban Development and Regeneration; Sustainable Development (Concepts, Practices and Challenges); Learning from Liveable Cities; Regulating Development (Planning Law and Policy); Digital Planning and Community Engagement, Mediation and Negotiation Skills.

Full module lists can be found on our website.



This programme has a fantastic range of modules, from sustainability to planning law and theory, which means that I graduated with a strong and broad knowledge of the industry. The school hosted numerous public talks and events which were free to attend and great for those seeking to generate new ideas and boost their CV.

**Astrid Guthier,
Urban Planning and
Development (BSc 2019)**





Meet the experts

Professor Pete Mackie

Why should someone choose to study human geography at Cardiff University?



Human geography gives you such a breadth of understanding of global and local challenges in a way that most subjects do not. You become really knowledgeable about a lot of stuff, whether it's about economics, social issues, political issues, cultural issues, environmental issues, sustainability issues. All of that is covered in geography, which is what I love about it the most.

But why Cardiff? One is our values. Our values sit at the heart of what we do, and we care about social justice. That drives us and drives our teaching.

Secondly, impact. You can care and take an interest in a topic and do that in a solely academic way. Here though, we put that research into practice, and try to bring about change through our research.

Dr Matluba Khan

What's your biggest achievement to date?



The greatest achievement for me is to have had the opportunity to work with a primary school in Bangladesh, where we could design and build an outdoor learning environment for children and the community. We worked with them to capture their voices, develop their design, and build it. I also evaluated the impact of the project on children's learning and their motivation to be in play.

The project was highly successful and has received several international accolades for service to the community. That project has also driven the work we have done in Grangetown, to work with children, to listen to their voices, and capture their thoughts to drive change in the community.

Dr Ruth Potts

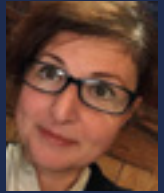
What makes geography and planning at Cardiff University different?



The School of Geography and Planning is one of the biggest schools in the UK with a focus on the nexus of geographical and planning issues. The school is home to staff from dozens of different countries, bringing expertise and knowledge of how planning and geography intersect at local, national, and international scales. We are also the only planning school in the world that offers modules at the undergraduate and postgraduate level exploring digital planning, considering the relationship between planning and technology.

Dr Francesca Sartorio

What first attracted you to study planning? What excites you about it?



When I started studying - and then practicing - planning, I wanted to change this world. Planning is about managing change in space, and by doing so, mediating between interests that can be predatory and devastating on people and environments, or kind and respectful or, more often, a mix of the two. The land is a crucial element for societies around the globe; it provides us with the means for our sustenance and shapes the contexts we live in. Its morphology, resources, limitations have the potential of enhancing, or limiting, the quality of life of localised societies and it is both the result and root of cultural arrangements.

It seemed to me that by changing the place(s) we inhabit for the better we could push inequalities to disappear, live in tune with nature and with others - and planning is key.





Generating debate and influencing policy

Our international reputation for research quality and excellence directly enhances our teaching and your overall academic experience.

You benefit from the most up-to-date information and instruction due to staff involvement in research, both in the UK and around the world.

We have made significant contributions to government policy, engaging with policymakers to ensure our research findings play a crucial role in shaping decisions and promoting sustainable development.

Our Innovation and Engagement Unit plays a key role in this through its timetable of high-profile research seminars and public lectures. You'll be able to attend these events to learn more about wider research and policy debates in the fields of planning and human geography.

We have research strengths in human geography and planning in the following areas:

The **Environment Research Group** combines expertise from across the school, bringing together researchers with a background in a wide range of theories and methods. The empirical foci of the research group extends to, amongst others, biosecurity, participatory democracy, social justice, circular economy, sustainability transitions, food security and ecological foot printing. Its members share a commitment to innovation and engagement and an interest in the development of collaborative approaches with researchers in other disciplines.

The **Spatial Planning and Analysis in City Environments Research Group** specialises in both theoretical and applied research on a wide range of topics related to cities and urban environments. It develops focused collaborations and a range of activities that link planning and urban design theories, policies, and practices to foster and support research within the school and promote activities externally. It aims to explore new research pathways to understand the way cities and urban environments work as well to develop better planning and policy approaches



to designing and managing urban settlements. The substantive interests of the group include land use, population change, urban morphology, transport, public space, and housing.

The **Economic and Political Worlds Research Group** is concerned with theoretical and applied research on how economic and political processes are created, and their impact on society, politics, and economies. Research in the group includes exploration of regional and urban development, innovation, entrepreneurship, corporations and globalisation, and urban governance and politics.

The **Social and Cultural Geography Research Group** brings together social and cultural geographers to engage with feminist, postcolonial and other theoretical perspectives within human geography. Such critical thinking is undertaken with reference to a diverse range of empirical topics such as breastfeeding, homelessness, drugs and alcohol, cycling, food banks, religion, surfing, fashion, music and dance, animal-human interactions, and community gardens and allotments.





Applications

Entry requirements

All applicants must normally have passed English Language and Mathematics at GCSE (at least grade C) or have an equivalent qualification.

Human Geography (BSc)

UCAS Code: L700 (three years) or L701 (four years with professional placement)

A-level: Typical offer AAB-ABB

Human Geography and Planning (BSc)

UCAS Code: LK74 (three years) or LK75 (four years with professional placement)

A-level: Typical offer ABB-BBB

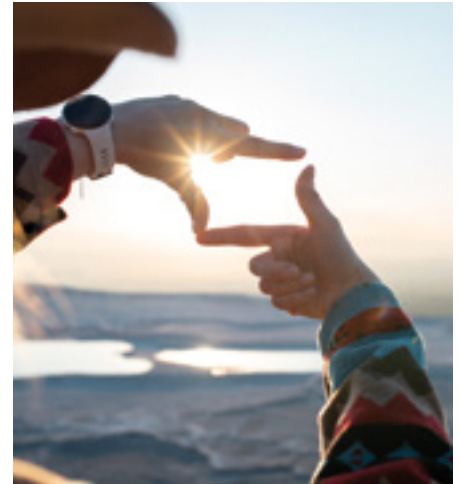
Urban Planning and Development (BSc)

UCAS Code: K490 (three years) or K446 (four years with professional placement)

A-level: Typical offer ABB-BBB

Geography A-level is beneficial but it's not a requirement to study our programmes. The UCAS Tariff is applied to all UK qualifications. General Studies is not accepted as an A-level subject for Admissions purposes.

Applications from those holding alternative equivalent/overseas qualifications are welcome. Please see our website for details including English language requirements.







Important Legal Information

The contents of this brochure relate to the Entry 2024 admissions cycle and are correct at the time of going to press in August 2023. However, there is a lengthy period of time between printing this brochure and applications being made to, and processed by us, so please check our website at: **www.cardiff.ac.uk** before making an application in case there are any changes to the course you are interested in or to other facilities and services described here. Where there is a difference between the contents of this brochure and our website, the contents of the website take precedence and represent the basis on which we intend to deliver our services to you.

Your degree: Students admitted to Cardiff University study for a Cardiff University degree.



This brochure is printed on paper obtained from well managed sources using vegetable-based inks. Both the paper used in the production of this prospectus and the manufacturing process are FSC® certified. The printers are also accredited to ISO14001, the internationally recognised environmental standard.

Mae'r ddogfen hon hefyd ar gael yn Gymraeg. This document is also available in Welsh.

Cardiff University is a registered charity, no. 1136855

This prospectus can be made available in alternative formats, including large print (text), Braille and on audio tape/CD.

To request an alternative format please contact Laura Roberts:

Tel: **029 2087 4455**

Email: **RobertsL9@cardiff.ac.uk**

CARDIFF
UNIVERSITY

PRIFYSGOL
CAERDYDD

To find out more about the
School of Geography and Planning
please visit our website:

**[www.cardiff.ac.uk/
geography-planning](http://www.cardiff.ac.uk/geography-planning)**

Contact us

Tel: **+44 (0)29 2087 4022**

Email: **[gandpenquiries@
cardiff.ac.uk](mailto:gandpenquiries@cardiff.ac.uk)**

School of Geography and Planning
Cardiff University
Glamorgan Building
King Edward VII Avenue
Cardiff CF10 3WA, UK

Stay in touch



cardiffgeographyandplanning



@CUGeogPlan

Student life

Got questions about student life?
Get them answered at:

**[www.cardiff.ac.uk/
studentbloggers](http://www.cardiff.ac.uk/studentbloggers)**

Want to know more about life at
Cardiff University? Our student
bloggers are recording their
experiences and are happy to
answer your questions.

Our student bloggers are real
students studying on a range of
courses. They are here to answer
any questions you have about life at
Cardiff University. What's a typical
day like? What clubs and societies
are there? Is Cardiff's music scene
any good? It can be almost anything.

Mae'r ddogfen hon hefyd ar gael yn Gymraeg.
This document is also available in Welsh.

GEOPL/0823

THE SUNDAY TIMES
THE SUNDAY TIMES
GOOD
UNIVERSITY
GUIDE
2023
WELSH
UNIVERSITY
OF THE YEAR