



Cardiff University School of Psychology – DEdPsy

Open Evening for prospective applicants
2025-6

Introducing the Programme Team

Programme website - <http://psych.cf.ac.uk/degreeprogrammes/postgraduate/dedpsy/index.html>

Programme Tutors

Victoria Biu, Gemma Ellis, Rachael Hayes, Emma Birch, Rosanna Stenner & Penelope Edwards.
Ian Smillie remains an Honorary Tutor.



Programme Directors

Hayley Jeans & Dale Bartle



**Cardiff
University
School of
Psychology**



**CARDIFF
UNIVERSITY**

**PRIFYSGOL
CAERDYDD**

Overview – what we aim to cover tonight

- Why choose the Cardiff University DEdPsy Programme?
- Our ethos and how the course is structured
- Entry requirements
- The application process
- The main features of the selection process.
- Funding arrangements.
- How to find out more

Why choose the Cardiff DEdPsy Programme?

Cardiff

The University is located in the heart of Cardiff, the vibrant capital city of Wales.

Top 10

The School of Psychology is one of the largest in the UK and is ranked 7th for Psychology in The Complete University Guide 2026

High quality teaching

From experienced professional tutors with a range of expertise within the field of educational and child psychology.

A variety of placement experiences

The opportunity to apply psychology, practice skills taught and undertake research in three different educational psychology services.

Stimulating research opportunities

A progressive series of research projects designed to scaffold towards thesis

COMOIRA

A unique problem-solving approach to educational psychology, designed at Cardiff and underpinning all aspects of the programme.

Supervision

High quality, consistent supervision for professional development, fieldwork and research from both course tutors and professionals in placement.

Opportunities to join the thriving field of educational psychology in Wales

Close links with Welsh Government, Local Authority EP teams, NAPEP Wales.

Our Ethos

- Confident, competent professionals of the highest standard in the field of educational psychology.
- Practice informed by Social Constructionism and Systemic Thinking.
- An advanced level of knowledge in educational psychology.
- A critical and reflective attitude and the ability to use knowledge of the subject in original and creative ways.
- We take an inclusive approach to academic life, and we will fully support you in achieving your academic goals and career aspirations, to be the EP you want to be.
- We are committed to promoting equality and diversity in all of our practices and activities. Our aim is to establish an inclusive and welcoming culture which ensures equal opportunities for all.

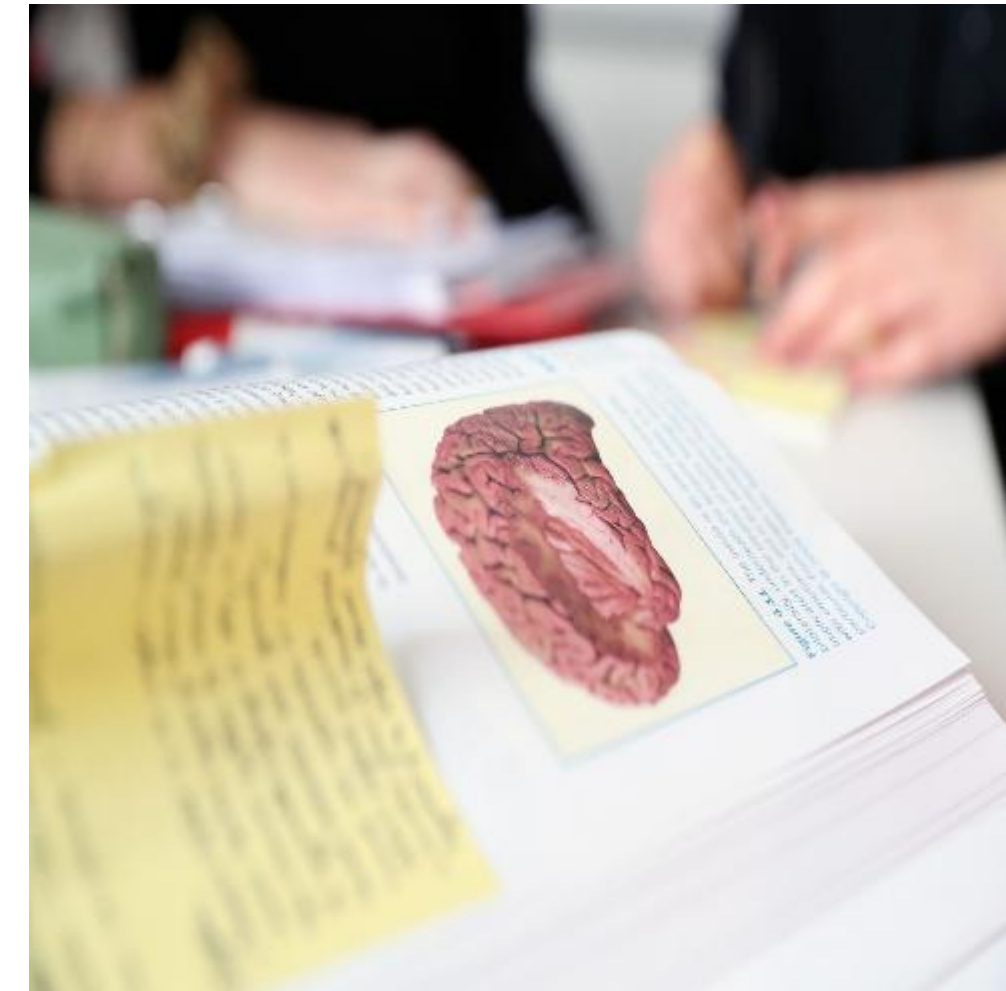
Course Structure



**University teaching
and learning**



**Fieldwork
Placements**



Research



Independent Study

Overview of the three years

- Year 1 – University - including research (60%)
Fieldwork – including investigative visits (40%)
- Year 2 – University (33%)
Fieldwork – including research (67%)
- Year 3 – University (28%)
Fieldwork – including research (72%)

Cardiff University - DEdPsy Year Plan for 2024-2025

	Term One				Term Two				Term Three			
	W/C	Year 1	Year 2	Year 3	W/C	Year 1	Year 2	Year 3	W/C	Year 1	Year 2	Year 3
1	02/09*	SDS & PP	EPS 2***	EPS 3****	06/01	U	R & SDS	R & SDS	28/04	EPS 1	U (1week)	R & SDS
2	09/09	SDS & PP	EPS 2	EPS 3	13/01	U	EPS 2	EPS 3***	05/05*	EPS 1	EPS 2	EPS 3
3	16/09	SDS & PP	EPS 2	EPS 3	20/01	U	EPS 2	EPS 3	12/05	EPS 1	EPS 2	EPS 3
4	23/09	SDS & PP	EPS 2	EPS 3	27/01	U	EPS 2	EPS 3	19/05	EPS 1	EPS 2	EPS 3*
5	30/09	U (Induction)	EPS 2	EPS 3	03/02	U	EPS 2	EPS 3	26/05	R & DS	R & DS	R & DS
6	07/10	U	EPS 2	EPS 3	10/02	U	EPS 2	EPS 3	02/06	EPS 1	EPS 2	EPS 3
7	14/10	U	EPS 2	EPS 3	17/02	EPS 1	EPS 2	EPS 3	09/06	EPS 1 (6 weeks)	EPS 2 (5w)	EPS 3 (5w)
8	21/10	U	U (1 wk)	EPS 3	24/02	R & DS	R & DS	R & DS	16/06	R & SDS	R & SDS	R & SDS
9	28/10	R & SDS	R & SDS	R & SDS (1w)	03/03	EPS 1**	EPS 2	EPS 3	23/06	U (summer programme)	R & DS	R & DS
10	04/11	U	EPS 2	EPS 3	10/03	EPS 1	EPS 2	EPS 3	30/06	U (summer programme)	U (summer programme)	U (summer programme)
11	11/11	U	EPS 2	EPS 3	17/03	EPS 1	EPS 2	EPS 3	07/07	U (summer programme)	U (summer programme)	U (summer programme)
12	18/11	U	EPS 2	EPS 3	24/03	EPS 1	EPS 2	EPS 3	14/07	R & DS	R & SDS	R & SDS
13	25/11	U	EPS 2	EPS 3	31/03	EPS 1 (6w)	EPS 2 (11w)	EPS 3 (11w)				
14	02/12	U	EPS 2 (12w)	EPS 3 (13w)	07/04	R & DS (1w)	R & DS (1w)	R & DS (1w)				
15	09/12	U (10w)	U	U	14/04	Easter (2w)	Easter (2w)	Easter (2w)				
16	16/12	R & SDS(1w)	R & SDS (1w)	R & SDS (1w)								
	23/12	Xmas (2w)	Xmas (2w)	Xmas (2w)								
Total EPS days (Per Term)		N/A	48	52	-	30	44	44	-	29	19	24
Total EPS days (for the academic year)										59	111	120****
Term dates	Term One begins on Monday 2 nd September 2024 and ends Friday 20 th December 2024				Term Two begins on Monday 6 th January 2025 and ends Friday 11 th April 2025				Term Three begins on Monday 28 th April 2025 and ends Friday 18 th July 2025			

COMOIRA – The Constructionist Model of Informed, Reasoned Action

- An innovative model for applying psychology, where psychological theory and research lie at the centre of a flexible process that can inform all the different tasks in which EPs can become involved.
- A framework that we all apply to all aspects of our work



COMOIRA

References

Gameson, J., Rhydderch, G., Ellis, D. and Carroll, H.C.M. (2003). Constructing a flexible model of integrated professional practice: part 1, conceptual and theoretical issues. *Educational and Child Psychology*, **20**, 4, 96-115.

Gameson, J., Rhydderch, G., Ellis, D. and Carroll, H.C.M. (2005). Constructing a flexible model of integrated professional practice: part 2, process and practice issues. *Educational and Child Psychology*, **22**, 4, 41-55.

Rhydderch, G. and Gameson, J. (2010). Constructing a flexible model of integrated professional practice: part 3, the model in practice. *Educational Psychology in Practice*, **26**, 2, 123-149.

Gameson, J. and Rhydderch, G. (2016). The Constructionist Model of Informed and Reasoned Action (COMOIRA). in B. Kelly, L. Woolfson and J. Boyle (Eds.), *Frameworks for Practice in Educational Psychology, Second Edition: A Textbook for Trainees and Practitioners*. London: Jessica Kingsley.

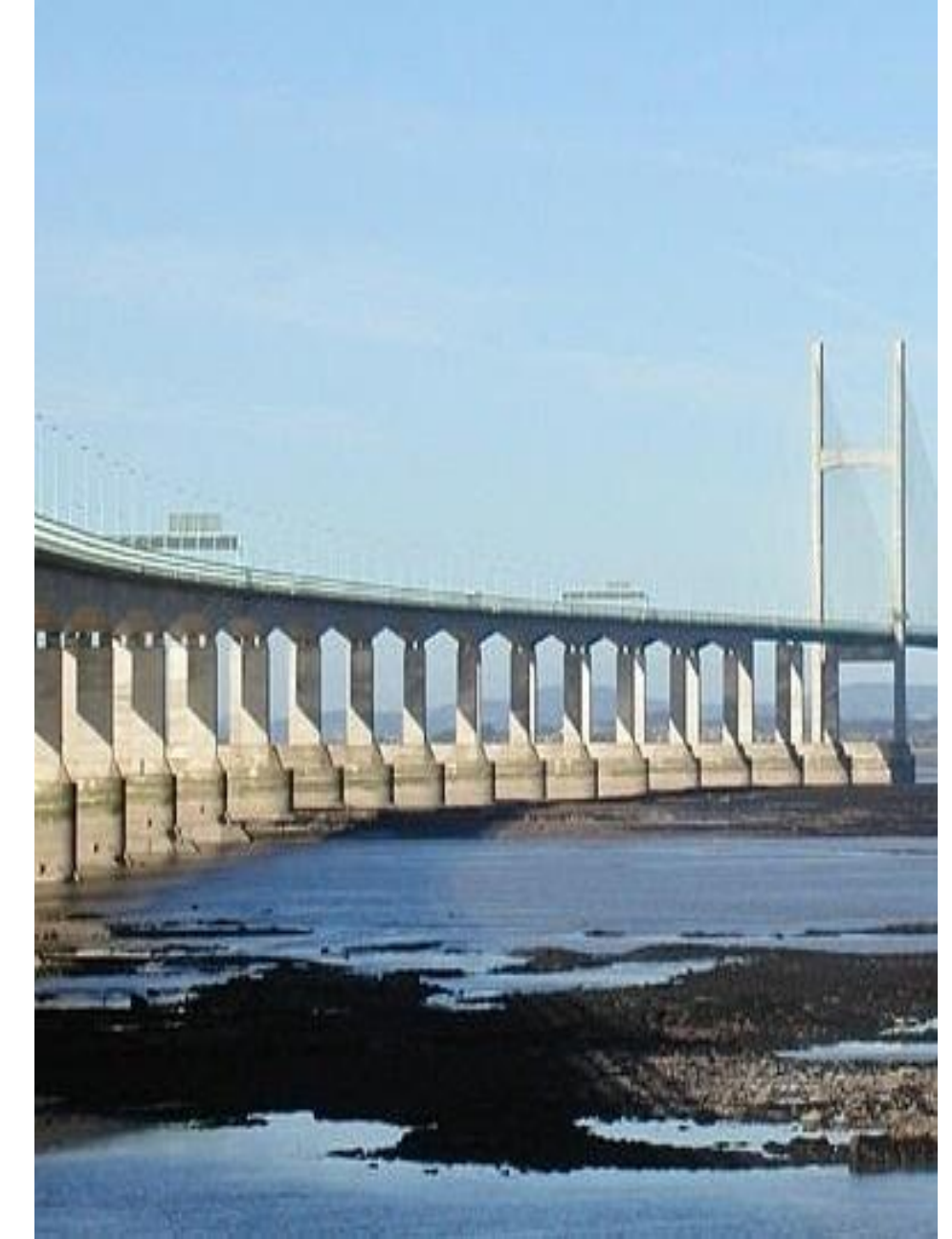
University teaching and learning sessions

These take place in the tower building and are led by the programme team, covering 6 areas:

- **Research Methods in Educational Psychology**
- **Processes and Methods of Assessment**
- **The Psychology of Learning: Managing Change**
- **The Psychology of Social and Emotional Development: Managing Change**
- **Understanding and Working with Organisations, Systems and Groups: Managing Change**
- **The Role of the Educational Psychologist: Managing Change**

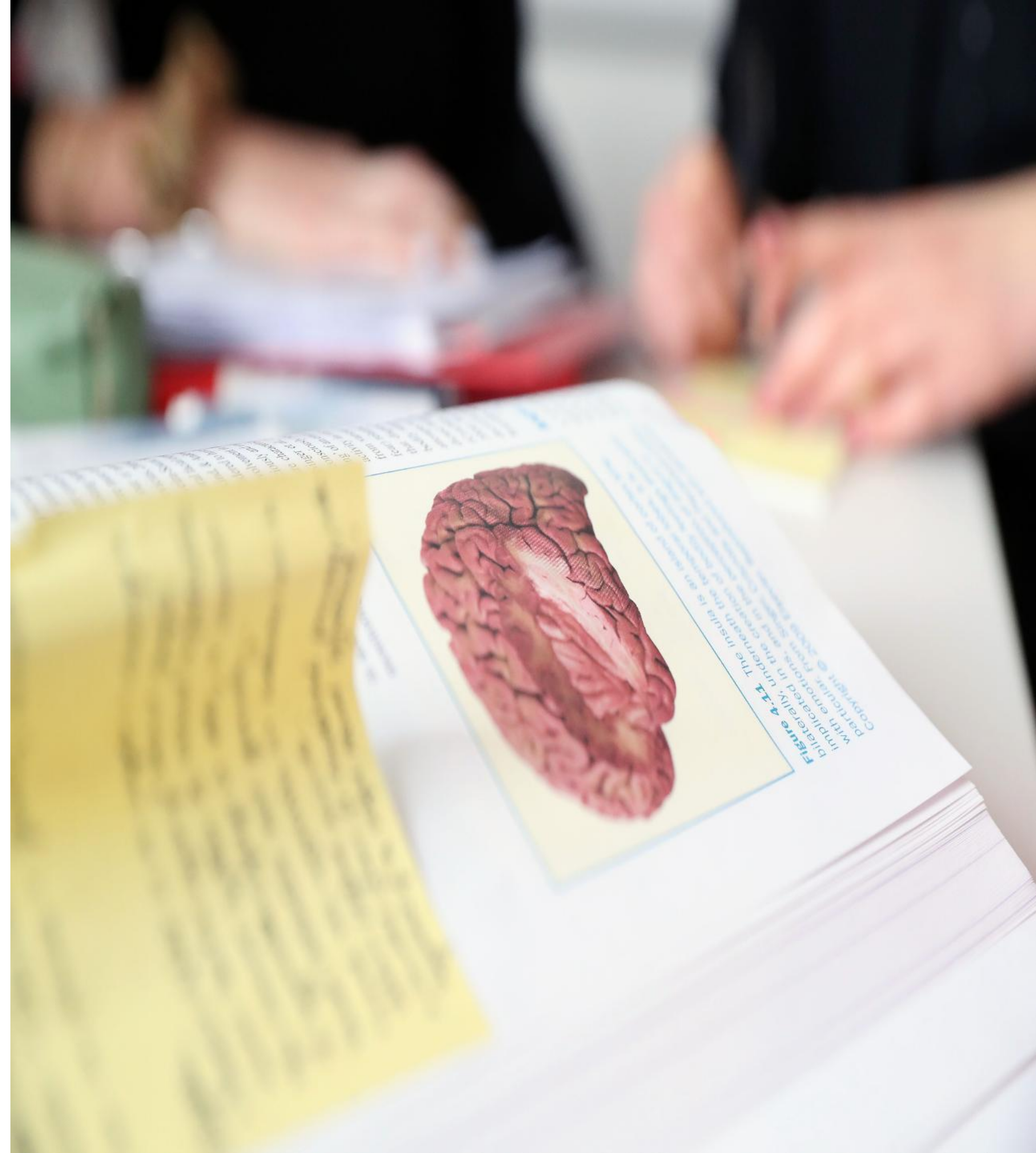
Fieldwork Placements

- All Cardiff trainees have placements in LA psychology services in Wales and, where necessary, some counties on the border with England.
- Placements are arranged for all three years of the programme and trainees do not need to find a placement to employ them during years 2 and 3.
- Cardiff trainees have three separate placements in different LAs across the 3 years and can therefore obtain a variety of different experiences throughout training.
- Funded trainees currently need to undertake 2 out of 3 of their placements in Wales.
- Fieldwork placements are a compulsory part of training and trainees cannot opt out of these arrangements, for example, to seek employment in any of the three years.



Research

- Cardiff offers a graduated and supported approach to the completion and writing of research projects
- Over the course of the three years, three projects will be completed, written up and disseminated to others
- Third year students select their own research topic supported by the tutor team and their cohort
- The emphasis is on research that contributes to the development of EP practice and of the profession.



Independent Learning

Time for independent study is incorporated into the programme.

Trainees have access to the university libraries and support from subject specialist librarians.

Trainees living away from Cardiff can access numerous online resources, including access to publications and journals online and course materials on Learning Central.

When in Cardiff, in addition to the tower building, the newly completed CU Centre for Student Life has numerous work-stations and meeting rooms that can be used for independent study or group work.





Trainee views about the programme

Who can apply?

You must have one of the following:

- An initial degree in psychology (preferably 2:1 or above); or
- A psychology-based Master's degree;
- A conversion award conferring eligibility for GBC*

(www.bps.org.uk)

At the time of making the application you must have a minimum of 1 year full-time (or part time equivalent) experience of working with children and young people within:

- Education
- Health
- Social care
- Youth justice
- A childcare or community setting

English language requirements:

You must have a good command of written and spoken English.

If your first language isn't English or Welsh, you must provide recent evidence that you meet the required standard.

The only acceptable English qualification for the course is the International English Language Testing System, Academic.

An overall grade of at least 7.5, with a minimum of 7.5 in each of the sub tests, is required.

*Graduate Basis for Chartered membership of the BPS.

And...

- Eligibility to enrol on the programme is dependent upon satisfactory completion of an Enhanced Disclosure and Barring Service (DBS) Check, i.e., one that does not reveal any information that suggests a trainee would be unsuitable for work with children, young people and vulnerable adults.
- Cardiff University also has in place Fitness to Practise procedures for applicants.

A few other things you need to know...

The Cardiff Programme is based on conditions set by the **Health and Care Professions Council (HCPC)** and the **British Psychological Society (BPS)**.

Trainees who successfully complete the programme will be eligible:

- for Chartered Status with the BPS; and
- to apply for registration with the HCPC as an educational psychologist, which is an essential requirement for practitioner psychologists.



What are the Cardiff DEdPsy funding arrangements?

The course is funded by the Welsh Government, who fund 10 places with a training bursary of £16,266.00 per year for all three years of the programme.

This is only available for permanent UK residents (resident in the UK for at least 5 years).

There is now a requirement to remain working in Wales for two years post-qualification. Failure to undertake this may result in the recovery of all or a part of the training grant/bursary.

No additional funds are provided for travel expenses etc. but most EPSs now pay the costs of travel for journeys that trainees make on EPS business during placement.

Trainees on the Cardiff DEdPsy Programme are not employed during any of the three years of their training.

Trainees on the Cardiff DEdPsy programme must successfully complete all programme requirements each year in order to progress to the next year.

Funding continued...

Self funding



The Cardiff DEdPsy programme will offer places to a limited number of candidates who meet all selection criteria and wish to self-fund.

The fees for 2025-2028 are £11,950.00 per year for UK residents and £26,450.00 for international students:
<https://www.cardiff.ac.uk/study/postgraduate/tuition-fees/postgraduate-tuition-fees-for-2023-entry/postgraduate-research-fees>

The selection process

- Application including personal statement
- Shortlisting
- Personal/ professional interview and written task (day 1)
- Presentation, interview and written task (day 2)

NB: The relevant forms to support your application and a guide to completing your application can be obtained from the DEdPsy administrator at dedpsyadmin@cardiff.ac.uk once applications open.

Personal Statement

**Write a personal statement of no more than 1000 words and upload to the application.
Please include the following information:**

- Your reasons for wishing to apply to train as an educational psychologist in Wales
- Whether you are planning on working in Wales following successful completion of the course (this is now a WG requirement for funded places)
- Your particular interests in terms of psychology and examples of how you have used psychology in previous roles and your work experience in relation to children and young people
- An overview of any research experience and/or knowledge you may have
- An outline of the skills and qualities you possess that would assist you through the process of training as an educational psychologist

What procedures govern applications for places?

As the training places on the DEdPsy in Wales are funded by Welsh Government, the application process is individual to this programme. Further details are published on the course website at:

<https://www.cardiff.ac.uk/study/postgraduate/research/programmes/programme/doctorate-in-educational-psychology>





Trainee views on surviving selection

How to find out more

Keep an eye on the key webpages such as:

The Association of Educational Psychologists (AEP)

British Psychological Society (BPS)

Department for Education (DfE)

Welsh Government

Read helpful publications such as:

The journal '*Educational Psychology in Practice*' (available to all members of the AEP)

The BPS publication '*Educational and Child Psychology*'

Stay aware of current and emerging issues, for example:

Transgender matters

Mental health in schools

New curriculum developments

New legislation

Contact an EP service and ask to interview or shadow an EP



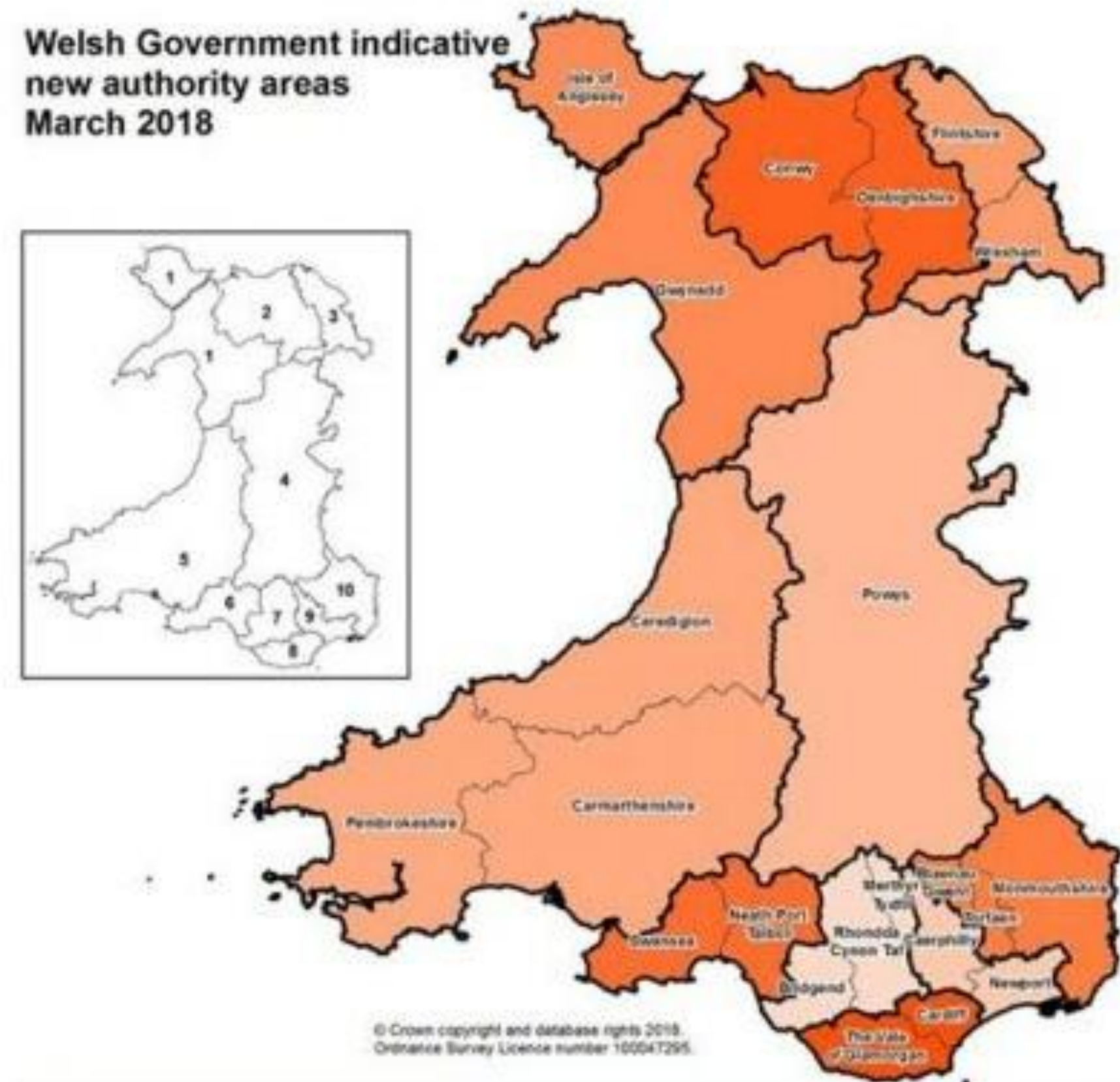
Welsh Government Document:

[Educational](#)

[Psychologist Guidance \(gov.wales\)](#)

Information from Principle EPs in Wales about the profession

Welsh Government indicative new authority areas March 2018



Useful websites

- www.careers.bps.org.uk/area/educational
- www.aep.org.uk/careers
- www.edpsy.org.uk
- www.gov.wales/educational-psychologist-guidance
- www.rctcbc.gov.uk/EN/Resident/SchoolsandLearning/AccessandInclusion/ServiceInformationDocumentationandPolicies/ServiceInformation/EducationalPsychologyService.aspx
- www.facebook.com/edpsy.org.uk

NB: Take caution with Facebook groups!



Diolch yn fawr!
Thank you for joining us
this evening.

Any questions?

dedpsyadmin@cardiff.ac.uk