

CARDIFF
UNIVERSITY

PRIFYSGOL
CAERDYDD

Cardiff University
Postgraduate
Prospectus **2024**

[cardiff.ac.uk / postgraduate](https://cardiff.ac.uk/postgraduate)



Why Cardiff University?

RUSSELL GROUP

Member of the Russell Group of 24 leading UK universities

99%

of postgraduate research graduates and 90% of postgraduate taught graduates who were working in the UK were in highly skilled employment 15 months after the end of their course*

90%

of our research has been confirmed as world-leading or internationally excellent

Research Excellence Framework (REF 2021).

£3,000 master's scholarships available

10,000

postgraduate students from more than 115 countries

#1

most affordable UK city for students
(Natwest Student Living Index 2022).

210,000

alumni in 180 countries



Contents

About us

Welcome	2
Our campuses	4
Get to know Cardiff	6
Getting here	10
An international outlook	12
Teaching excellence	14
Accommodation	16
Sport	18
Sustainability	20
Inspiring alumni	22
Research and impact	24
Changing our world	26
#Cardiffuni	28

Supporting you

Supporting your student life	30
Careers and employability	32
First-class facilities	34
Students' Union	36
Welsh language opportunities	38

Postgraduate taught study

Postgraduate taught courses	40
Why study a postgraduate taught course?	42
Undergrad to postgrad	44
Conversion courses	46
Funding your taught course	48

Postgraduate research study

Postgraduate research programmes	50
Why study a postgraduate research programme?	52
Doctoral Training Initiatives	54
Doctoral Academy	56
Funding your research programme	58

How to apply

How to apply	60
Applying for a taught course	61
Applying for a research programme	62

Course Directory

	63
--	----

Campus map

	70
--	----

What's next?

	72
--	----

*Source: Graduate Outcomes 2020/21 survey. Contains HESA Data: Copyright Jisc 2023. Jisc cannot accept responsibility for any inferences or conclusions derived by third parties from its data.

Welcome



At Cardiff University, we believe that what can be achieved together is greater than what we can achieve alone. We are a university committed to bringing the brightest minds together to think about the issues that matter most.

Our postgraduate students are a model example of the power of community in action. Whether it is lively discussion in seminars, pushing forward the boundaries of human

knowledge through research, or taking their expertise out into the world, our postgraduate students are collectively making a meaningful difference.

When you become a student at Cardiff University, you'll join a community where everyone is empowered to reach their full potential and join us in making a difference. Through excellent teaching and world-leading research, we'll give you the tools to succeed.

We'll encourage you to take risks, help you build resilience and give you an environment where it is safe to fail. As a community, we support each other to come up with the best ideas to tackle the issues that matter most. Together in progress.

Professor Wendy Larner, Vice-Chancellor



Among great minds

We are a research-intensive university, with 90% of our research confirmed as world-leading or internationally excellent (Research Excellence Framework 2021).

Our researchers are working to tackle major challenges facing society, the economy and the environment.

Outstanding facilities

We have 10 libraries, more than 2,500 study spaces and two dedicated postgraduate study zones. To support our world-leading research, we have invested millions to develop the latest facilities, including Europe's most powerful brain scanner and Wales' largest stock exchange trading floor.



Employability focused

Whatever stage of your career, our team of professional careers advisors will help you prepare for your journey after university. You'll have access to personal, subject-specific guidance; jobs from over 1,000 registered employers; and a busy calendar of careers fairs and events.

Supporting your student life

From enrolment to graduation, we're here to help you every step of the way. We believe our students can best succeed when they are getting the support they need. You'll have access to a wide range of support and advice, from health and wellbeing to managing your money and study skills.



Funding opportunities

We provide a range of opportunities to access funding for postgraduate taught and research degrees. This includes our master's scholarships scheme, offering a £3,000 tuition fee discount. We also offer an alumni discount to all Cardiff University graduates.



Sustainable

In 2019 we declared a climate emergency, recognising our need to play our part in the global response. We are building an inclusive, sustainable and resilient future through our environmental sustainability strategy.

Among great minds



Our campuses

Cardiff University is made up of two large, well-located campuses.

Cathays Park Campus

With wide tree-lined avenues and elegant Portland stone buildings, our historic Cathays Park Campus is an inspiring place to study.

Most of our academic schools are based at the Cathays Park Campus, along with our Students' Union and Centre for Student Life.

There are several libraries on-site along with cafés and coffee shops, including two vegetarian and vegan cafés. Our Postgraduate Study Zone provides a dedicated space for individual and group working.

Getting to us is easy with Cathays train station at the heart of our campus.

Located on the edge of Cardiff's city centre, you will only be a short walk from the cafés, bars and shops of the city, as well as Cardiff's beautiful 130-acre Bute Park.

Scan and watch:



Postgraduate Campus tour

Heath Park Campus

Our Heath Park Campus is co-located with Cardiff's University Hospital of Wales, one of the largest hospitals in the UK, just one mile from the city centre.

This dedicated medicine, dentistry and healthcare campus has its own three-storey library with a Postgraduate Study Zone, labs and seminar spaces within the £18m Cochrane Building.

There are study areas and IT facilities which are open 24 hours a day, seven days a week, as well as lecture theatres, seminar rooms, libraries and operating theatres.



Our campuses

Get to know Cardiff

Dynamic. Friendly. Affordable.
Cardiff is a city made for students.

‘Come the weekend, a buzz reverberates through the streets as swarms of shoppers hit the Hayes, followed by waves of revellers descending on the capital’s thriving pubs, bars and live-music venues.’

Lonely Planet 2022



Living in Cardiff



The city

Our city is an outstanding place in which to live, work and study. Full of character, heritage and ambition, Cardiff has all the benefits of being an exciting and modern capital city while also being a compact and affordable place to live.

**#1 most affordable
UK city for students**

(NatWest Student Living Index 2022)



A city made for students

The thousands of students who make Cardiff their home each year form part of the beating heart of the city, enhancing its rich and diverse culture. Cardiff is a friendly, welcoming and inclusive city. A place where you can be yourself.

Cardiff is a compact city best explored on foot or by bicycle. The city's OVO Bikes scheme has bike racks all over the city.



Culture

There is something for everyone in Cardiff, with cafés, pubs, nightclubs and entertainment venues catering to all tastes. The city has been declared the UK's first Music City, leading the way in putting live music at the heart of the city's ecosystem.

Our city has multiple theatres including the Wales Millennium Centre, home to the Welsh National Opera and host to major touring shows. The Sherman Theatre, home to new Welsh writing and Wales-based artists, is just a few doors down from our Students' Union. Cardiff also has several comedy clubs, multi-screen cinemas and a well-established arts centre.



Sport

One of the UK's major sporting centres, Cardiff is home to the 74,000-seat Principality Stadium. The city hosts professional football at the Cardiff City Stadium, rugby at the famous Arms Park and international cricket at Sophia Gardens. Cardiff also has an Olympic-sized swimming pool, a white water rafting and canoe centre, and an ice rink - home to the city's own ice hockey team.

Location

For quieter days, Cardiff has an abundance of urban green spaces, with 330 parks and gardens where you'll find students studying and relaxing on sunny days. There are regular concerts, festivals and events in the 130-acre Bute Park in the heart of the city just behind the magnificent Cardiff Castle. Cardiff Bay offers a chance to get near to the coast, with plenty of shops, bars and restaurants to visit.



Discover

If you want to explore further afield, Cardiff is surrounded by Wales' natural beauty, with the Bannau Brycheiniog (Brecon Beacons) National Park, the Gower Peninsula and Barry Island only a short distance away.



Shopping

As a capital city, Cardiff has great shopping - from famous brands to independent shops. You can easily spend the day discovering the boutiques and cafés of the city's network of glass-canopied Victorian and Edwardian shopping arcades.



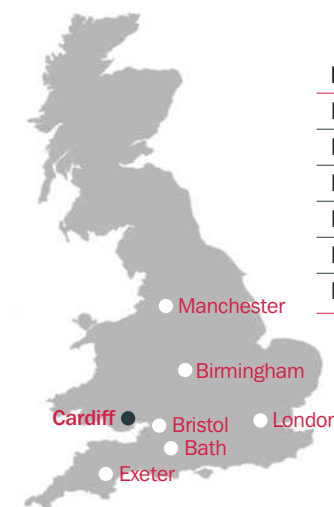
Staying safe

Ensuring our students are safe in our city is one of our key priorities. Students can use the free SafeZone app to alert security or local police if they need help or assistance. Our Students' Union operates a Safe Taxi Scheme in Cardiff, enabling you to call a taxi and get home safely in an emergency.



Getting here

Just across the Welsh border, Cardiff is an accessible city with direct rail links to major cities and access to two international airports.



Destination	Travel time
Bristol	45 mins
Bath	1 hour
Birmingham	2 hours
London	2 hours
Exeter	2½ hours
Manchester	3 hours

By air

Cardiff International Airport offers regular direct flights to over 25 destinations. Located just an hour away by bus, car and rail, Bristol International Airport reaches over 100 destinations around the globe.

By car

Cardiff is positioned on the M4, connecting Wales directly to London. The city is compact and easily walkable so it is unlikely that you will need a car while studying in the city.

By train

Direct trains to London leave every half an hour from Cardiff Central train station, departing up to 30 times a day. Frequent rail and coach services also connect Cardiff with major cities across the UK.



Cardiff is a friendly, diverse and global university. We understand that choosing to study abroad can be a big decision. That's why we're here to help you every step of the way.

www.cardiff.ac.uk/international
[e: international@cardiff.ac.uk](mailto:international@cardiff.ac.uk)
[t: +44 \(0\)29 2087 4432](tel:+4412920874432)
[!\[\]\(bfe64b3b99d726c20cb41da66e0bcb5a_img.jpg\) cardiffinternationalstudents](#)
[!\[\]\(15a01675795da3c0924461c44b8bf202_img.jpg\) youtube.com/cardiffinternational](#)

An international outlook

As an international student, you'll benefit from our specialist support services designed to make your move to Cardiff as straightforward as possible.

With over 7,500 international students from 138 countries, you'll be joining a diverse and inspiring academic community. We understand that choosing to study abroad can be a big decision. That's why we're here to help every step of the way.

Application guidance

Our international team can help guide you through the process of applying to study at Cardiff University. You can contact our international team at any point before, during and after the application process.

A warm welcome

We offer a coach collection service from Heathrow Airport before the academic year starts, providing a warm welcome and taking you and your luggage to your accommodation. Once you arrive in Cardiff, we will provide you with a comprehensive induction programme and arrange activities to help you settle into your new home.

Guaranteed accommodation

Cardiff University is one of only a small number of universities that guarantees high-quality, conveniently-located accommodation for single international students for the full duration of your studies (conditions apply).

Expert advice

Alongside the support provided by your academic school, our international student advisors are on hand to assist you with issues such as visas, immigration and finance. Our Student Futures careers team offers specialised career support to international students, helping to prepare you for life after university.

Student societies

Our award-winning Students' Union is home to more than 200 societies, many of which represent specific cultures or countries. The annual Go Global festival is a celebration of food, music and culture that gives international societies a platform to showcase and celebrate their talents.

English language programmes

Our English language teaching centre offers a variety of courses which cater for most language levels and abilities. Students come from all over the world to improve their English language skills before starting university. Courses are taught both online and on campus by our experienced, fully qualified English language tutors.

Choose from the following:

- **Summer pre-session programmes:** 8, 10, 12 or 20 week intensive courses for international students holding conditional offers
- **English for university study programme:** a full-time English language and study skills course for international students
- **In-session English language support:** ongoing assistance with academic writing, exam techniques, listening and speaking, pronunciation, note-taking and seminar skills.



International students



Cardiff University has a long history of providing outstanding research-led teaching

Ranked 166th in the QS World Rankings 2023, we are **Wales' highest ranked university** and remain amongst the UK's best

Our teaching has received robust endorsement from the **Quality Assurance Agency** for Higher Education (QAA)

Teaching excellence

We'll encourage you to take risks, face your fears, and develop resilience in an environment where it is safe to fail.

Our aim is to create a community where everyone is empowered to reach their full potential and join us in making a difference in times of need.

Academic life at Cardiff University is challenging, innovative and rewarding. You'll engage with leading academics and benefit from the knowledge and insight generated by their research.

As a postgraduate student, you will be encouraged to develop a wide range of both subject-specific and transferable skills, enhancing your employability and equipping you with the capabilities you need to excel in your chosen discipline.

Learning on campus and online

We've learned a great deal over the last few years about online learning and have received positive feedback from our students on the benefits of a blended approach. We continue to use innovative approaches to teaching that will support you to engage fully and actively in your studies.

We have a team in place to design your digital learning experience, ensuring that it is interactive, inclusive and engaging. Throughout your degree you'll benefit from a consistently high-quality learning experience, with dedicated technology to help you fulfil your potential. We have tools in place across campus to help facilitate interaction in lectures and small group sessions, alongside lecture recording technology to help with note-taking and revision.

Languages for All

Our Languages for All programme gives you the opportunity to improve your language skills alongside your studies - for free.

Whether you're a complete beginner or a linguistic ace, we cater for all abilities. Our flexible study options allow you to learn in a way that suits you, either through weekly classes, intensive courses or independent learning. We offer courses in:

- Arabic
- French
- German
- Italian
- Japanese
- Mandarin Chinese
- Portuguese
- Russian
- Spanish

Continuing Professional Education

We offer a diverse range of part-time courses in a variety of subject areas which take place in the daytime, evening and weekends to fit around your lifestyle. Our Continuing Professional Education courses are ideal in helping you enhance your CV, improve your business and project management skills, and broaden your learning experience.



Languages for All



Accommodation

Whether you live in a university residence or private accommodation, we want you to feel at home in Cardiff.

University residences

Dedicated postgraduate flats and houses are available in university residences, providing you with the opportunity to meet, live and work alongside like-minded people who understand the demands of postgraduate study.

International (not including EU, EEA or Swiss national) postgraduate students are guaranteed a single occupancy place in university residences for the full duration of their studies (terms and conditions apply).

#1 most affordable UK city for students
(NatWest Student Living Index 2022)

Options to suit everyone

We offer a range of student residences to suit individual preferences and budgets, including:

- Single or mixed gender accommodation
- Private or shared bathrooms
- Self-catered or part-catered
- A limited supply of residences suitable for couples or families (please note that this cannot be guaranteed).

Affordable

A self-catered residence costs between £113 and £173 per week (2023/24 prices for single occupancy residences). Rent is payable by Direct Debit in three instalments across the year.



Accommodation

Private accommodation

There is a variety of accommodation available in Cardiff from both private halls and private landlords. Our Students' Union also operates its own professional letting agency, Cardiff Student Letting, which provides student houses suitable for a range of budgets and does not charge agency fees.



Private accommodation



Sport

With an extensive range of clubs and outstanding sports facilities across campus, we are consistently ranked among the top UK universities for sport.

Regardless of your level of ability or commitment, we have a range of opportunities for you. We'll provide you with the chance to participate in both elite and recreational sport across our four sites.

Sports clubs

Whether you're a beginner or an elite athlete, we have something for all skill levels. There are more than 60 Athletic Union clubs to try out, from athletics, hockey and rugby to martial arts, ultimate frisbee and sailing.

Many of our Athletic Union clubs take part in the British Universities and Colleges Sport (BUCS) competition, travelling across the UK to compete against other universities. We also have over 100 teams competing in the recreational Intra-Mural Games (IMG) programme, including netball, football and rugby social leagues.

Sport facilities

As a Cardiff University student you'll have access to our four main sports facilities spread across campus:

- Our Sports Training Village, located at our Talybont student residences, has a wide range of indoor and outdoor sports facilities. This includes our multi-purpose sports hall and floodlit artificial pitches, a fitness suite, squash courts and cricket nets.
- The Fitness and Conditioning Centre includes a state-of-the-art strength and conditioning suite, with an extensive range of cardio, resistance and weights equipment spread across three floors. On-site coaches offer fitness classes, personal training, individual programme design and nutrition advice.
- Located just a few doors away from the Students' Union, Studio 49 hosts a range of fitness classes such as yoga, boxercise and group cycle.
- Our newly upgraded outdoor sports complex comprises five floodlit artificial pitches and grass pitches.

High Performance Programme

Our High Performance Programme provides elite athletes with comprehensive support to help them excel in both their academic and sporting careers while studying at Cardiff University. The programme includes areas such as physiotherapy, strength and conditioning, psychology, nutrition, a free sports facility membership and the potential for a financial award.

Cardiff University has been home to many athletes, including international rugby, cricket and hockey players. In 2022, 14 Cardiff University alumni and student athletes competed in the Commonwealth Games.



Sport



Sustainability

Sustainability is an integral part of our values and something we aim to embed in all of our operations.

Our goal is to bring about social, environmental, economic and health benefits, not only to Wales, but to the wider world.

In 2019 we declared a climate emergency, recognising our need to play our part in the global response. We are building an inclusive, sustainable and resilient future through our environmental sustainability strategy.



Sustainability principles are embedded in a wide range of our teaching subjects, empowering our students and graduates to contribute towards a more sustainable society.

We actively encourage the reuse of water bottles and mugs. Free drinking water is available across the university.



Every year our sustainability week provides events and practical sessions to encourage our staff and students to adopt sustainable practices in their lives.

We were awarded Silver Accreditation by the Hedgehog Friendly Campus scheme in February 2023.



We use 100% recycled paper for standard printing and photocopying within the university.

Through our sustainable travel plan, we encourage our staff, students and visitors to use sustainable modes of transport.



Sustainability

Inspiring alumni

When you graduate, you'll join our 210,000-strong alumni community in 180 countries around the world.

The Cardiff experience goes beyond your time on campus - it's a relationship for life. As an alum, you'll have access to a range of services including our alumni platform, Cardiff Connected, to help develop your professional network, find opportunities and tap into support.

You'll also receive personalised careers advice, discounts on further study, event invitations and help to start your own business.



Alumni



Jamilla Hekmoun (MA 2018)

Islam in Contemporary Britain

Jamila is chair of the Muslim Mental Health Alliance (MMHA) and spent the pandemic working tirelessly to provide resources and support to the Muslim community. She also sits on the board of the Muslim Council of Wales and leads community engagement for SEF-Cymru, an organisation dedicated to helping children overcome educational underachievement.



Meet some of the alumni who were recognised at the 2022 30(ish) Awards, which celebrates change-makers and innovators from the Cardiff University alumni community:

Dr Matthew Jones (MA 2017)

Welsh and Celtic Studies

Matthew is an Assistant Instructional Professor in the University Writing Program at the University of Florida. In this role, he is building transatlantic connections between Wales and the USA, working with Welsh programmes and agencies to employ American students and establishing programmes in the USA for Welsh students. Since 2017, he has become fluent in Welsh and uses his academic role to raise awareness of Wales' language, history and culture.



Dr Jenifer Millard (MPhys 2016, PhD 2021)

Astrophysics and Physics and Astronomy

Jennifer is a science communicator specialising in the field of astronomy. Her work as the host of the Awesome Astronomy podcast and talent for sharing her passion has seen her appear on TV and radio, with appearances on BBC World News, Times Radio and Weatherman Walking, as well as working on the stargazing app Sky Guide.

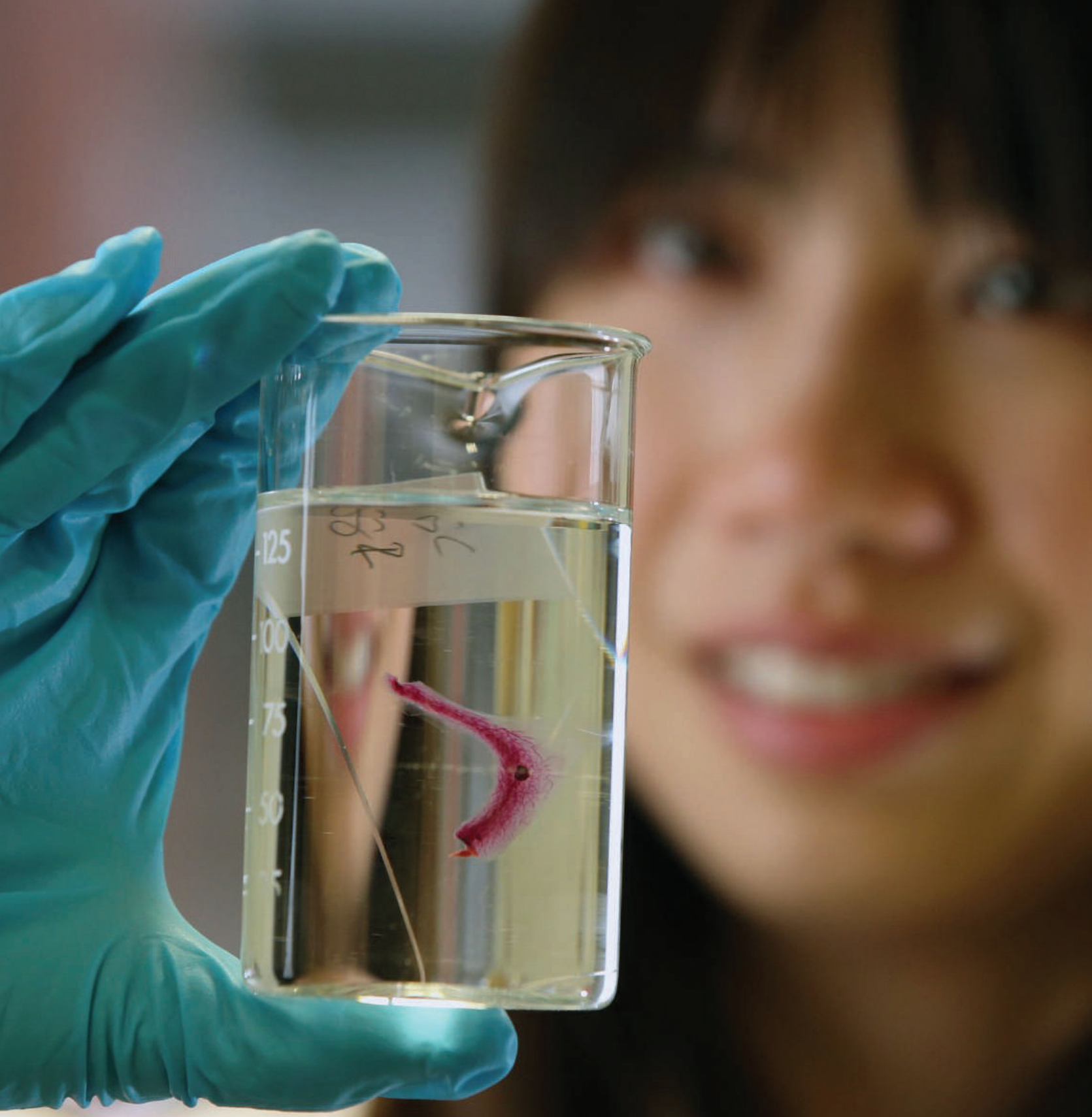
Gladys Emmanuel (LLM 2020)

Human Rights Law

Gladys is a Human Rights Lawyer and Gender Advocate in Nigeria. She is a member of the Nigerian Bar Association (NBA) and International Federation of Women Lawyers (FIDA Abuja). She currently serves at Tabitha Empowerment Centre, where she leads advocacy efforts to tackle gender-based violence and provides support for victims/survivors.



Inspiring alumni



Research and impact

Driven by curiosity, we are an institution united in positive action. We are problem-solvers and are determined in our pursuit of progress.

At Cardiff University, we apply our research in a way that creates real impact and makes a positive difference around the globe.

We have a thriving and innovative research culture that connects our academics to industry, business, government and the third sector in Wales, the UK and internationally.

From advancing our understanding of dementia to discovering the chemical composition of the Earth's mantle, our community of researchers is helping to create a stronger, healthier and more sustainable world.

We are a member of the Russell Group - the UK's 'Ivy League' of leading research universities. We are also a member of the GW4 alliance, which brings together the South West and Wales' four leading, research-intensive universities.

90%

of research at Cardiff University is officially world-leading or internationally excellent, according to the latest independent assessment of research quality across UK higher education institutions. Research Excellence Framework (REF 2021).

Our research teams have been awarded seven Queen's Anniversary Prizes for work of outstanding excellence. Our expertise puts us in demand with policymakers, non-governmental organisations and industry around the world.

Innovation institutes, research institutes and research networks

As a university united in action, our research and innovation institutes bring together academics from a range of disciplines to tackle some of the biggest challenges facing society, the economy, and the environment.

Our innovation institutes, research institutes and research networks comprise:

- Digital Transformation Innovation Institute
- Neuroscience and Mental Health Innovation Institute
- Net Zero Innovation Institute
- Security, Crime and Intelligence Innovation Institute
- Systems Immunity Research Institute
- Materials Research Network
- Neurodevelopmental Research Network
- Planetary Health Research Network
- Plastic Research Network
- Resilient Cities in Fragile Contexts Research Network



Research

Changing our world



Reducing single-use plastic waste

Reducing single-use plastic waste is a problem that requires both public behavioural change and effective legislation. Research from the School of Psychology and the Welsh School of Architecture underpinned Welsh, Scottish and UK Government policy changes which led to charging for single-use plastic bags and disposable coffee cups. This research prevented 9.4 million disposable coffee cups going to landfill from catering companies and was highly influential in national debates around single-use plastics.



Improving dementia communication

According to the World Health Organization, there are nearly 10 million new cases of dementia across the world every year. Linguistics research by Professor Alison Wray has explored the challenges of communicating with someone with dementia, and methods for improving this communication. Through her findings, Professor Wray has improved the practice of healthcare professionals, families, charities and care homes in the UK, the USA, Australia and New Zealand, and enhanced the lives of people with dementia.



Tackling bacterial contamination



Research into bacterial contamination using DNA sequencing tools has led to major developments in the understanding of how bacteria can survive in man-made products. Research by Professor Eshwar Mahenthiralingam helped global manufacturer Unilever to reduce incidents of contamination and develop improved preservative formulations. The team are now looking at the spread of bacteria in natural products and reusable packaging, and how to tackle the potential spread of bacteria in products with milder preservatives.

Detecting the DNA of cyberattacks

Cybercrime costs the world almost £460bn a year, affecting businesses worldwide, but a collaboration with Airbus has led to a completely new way of detecting and preventing malicious software. Using the latest advances in artificial intelligence and machine learning, Professor Pete Burnap and his team developed a system to create a DNA profile of cyberattacks based on their behaviour. The only team in the world to be fighting cyberattacks in this method, their software is able to detect malicious activity in malware with 98% accuracy within just 4 seconds.

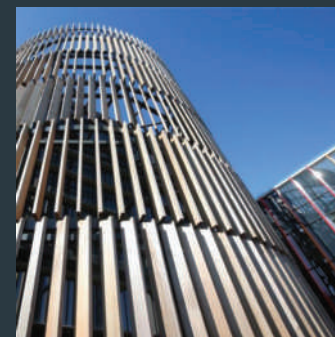
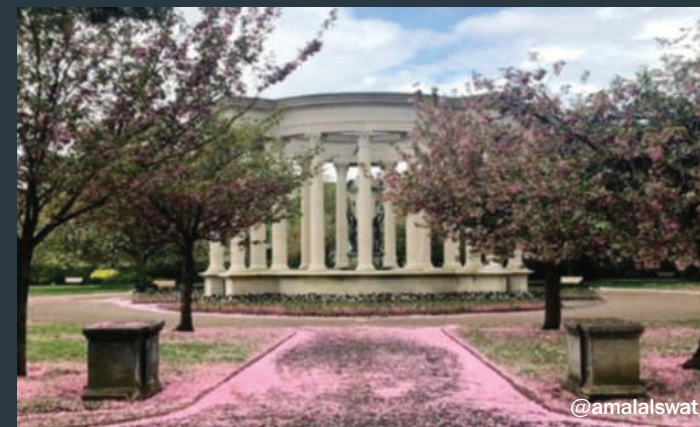
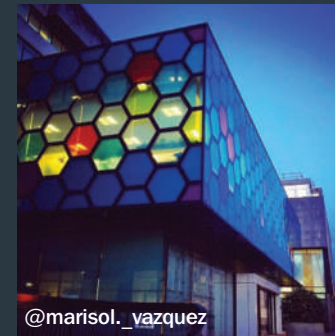
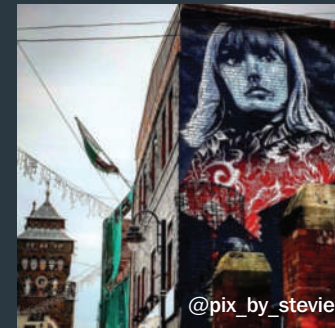
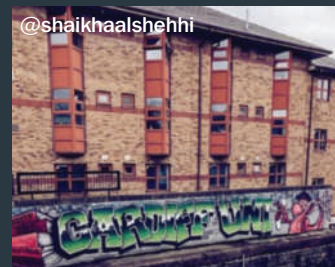
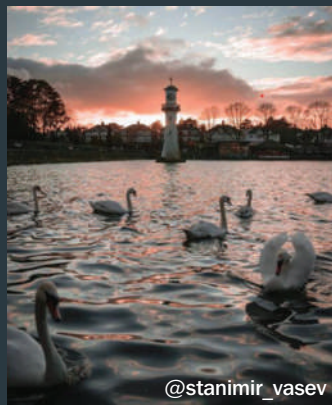
Strengthening uptake of the Living Wage

More than 5 million workers across the UK are in low-paid work and rates of in-work poverty are increasing. Research by Cardiff Business School has informed the strategies and campaigns of the Living Wage Foundation, which was formed to promote the standard and accredit employers, playing an integral role in increasing take-up. As a result of the Living Wage campaign, an estimated minimum of 323,514 workers, disproportionately part-time, employed by contractors and working within female-dominated occupations, have secured a pay increase.



#Cardiffuni

Sharing your Cardiff stories.



- @cardiffuni
- facebook.com/cardiffuni
- @cardiffuni
- youtube.com/cardiffuni



Our Centre for Student Life, an iconic building at the heart of the Cathays Park Campus and a one-stop hub for all of your student needs. Whether you're looking for advice on health and wellbeing, preparing for your future, managing money or living in Cardiff, our expert, dedicated support staff and teams will be on hand to support you.

Supporting your student life

We're here to help you succeed and make the most of your experience as a postgraduate student by ensuring that you can access any additional help you may need.

From enrolment to graduation and beyond, we're here to support you every step of the way. Based in the Centre for Student Life, your Student Connect team is your first point of contact for connecting you to all of our student support teams.

Support for disabled students

Our Student Disability Service offers information, advice and specialist support including study skills, mental health mentoring and support workers, to both current and prospective disabled students. We can help you to identify your support needs and will liaise with your academic school and other departments to put any required reasonable adjustments into place.

We also offer a screening and assessment service for students who think they may have a specific learning difficulty. The Student Disability Service operates an assessment centre where students applying for the Disabled Students' Allowance (DSA) can be assessed and advised on equipment and support available to assist with their studies.

Health and wellbeing

Our Health and Wellbeing team offers confidential counselling and emotional support to students, both in-person and online. The service is accredited by the British Association of Counselling and Psychotherapy (BACP).

We provide a variety of support options including self-help resources, peer support, workshops, courses and groups, wellbeing drop-ins, one-to-one therapy appointments, and trans and non-binary support.

We also have a Student Intervention Team, which supports vulnerable students who need priority support, as well as a Disclosure Response Team which provides dedicated and specialist help for victims of violence and abuse.

Advice and money

Our Student Funding and Advice team offers free, impartial, non-judgemental and confidential advice. Whether you're a prospective or current student, you can contact us for expert advice on issues such as funding, access to government benefits, housing, academic processes and welfare.

Our Bursaries, Scholarships and Money Support team provides information about money management and financial wellbeing for students, as well as helping you identify any additional funding you could apply for. We also offer a hardship fund to support students when they experience unexpected short-term financial crises when studying.

Award-winning childcare

Our award-winning Little Scholars Nursery welcomes the children of both students and staff, aged ten weeks to five years. Located in the heart of the Cathays Park Campus, the nursery offers a safe, nurturing, inclusive and stable environment.

Student visa support

If you're an international student, our Student Visa Support team offers confidential advice and support on immigration, visas and employment regulations.

World faiths

Our multi-faith university chaplaincy offers advice, support and care to students of all faiths and none in a safe and welcoming environment. Our chaplains offer confidential pastoral listening, quiet spaces for prayer or meditation, opportunities for worship and communal prayer, information about local faith communities, and social inter-faith events.

Listening to students

Your student feedback is critical to our success, allowing us to work with you as partners, listening to your views and improving your experiences at university. There are a number of ways you can share your feedback with us during your postgraduate studies, through surveys, module enhancement, your student reps and student champions. We then share your views at a university level and a school level to ensure that we can make changes based on your feedback.



Student support



We offer a wide range of services to support you with your career development during your time at Cardiff University and beyond.

Careers and employability

Whatever stage of your career you're at, our team of professional careers advisors is here to help you achieve your goals.

Preparing you for your future

Our expert careers advisers in Student Futures are all linked to academic schools and can provide you with personal, subject-specific guidance on everything from skills development to job searches to interview preparation and practical help.

You'll have access to online support which can help you with self-development, career planning and research. As a postgraduate student, you will have access to your Student Futures account where you can book appointments and events, and search for graduate employment opportunities with organisations recruiting directly from Cardiff University.

Commercial start-ups

Got an idea for a new business, social enterprise or freelancing opportunity? Student Futures can help you unlock your creativity and achieve your potential. You can access tailored personalised support to help establish or grow your business with 1:1 mentoring, skills development sessions and funding opportunities.

Employer connections

The Student Futures jobs board gives you access to more than 6,000 live jobs from over 1,000 registered employers.

We hold frequent careers fairs, employer presentations and specialist panel events. We have hundreds of employers on campus throughout the year who are actively looking to recruit our talented students.

Our postgraduates have secured employment with a wide range of high-profile organisations including:

- Admiral
- BAE Systems
- BBC
- Bloomberg
- Cap Gemini
- Citibank Group
- Deloitte
- Eversheds
- GE Healthcare
- HSBC
- IBM
- Microsoft
- the NHS
- the Office for National Statistics
- PwC
- Sky News
- TATA Steel
- UK Government

We also have strong links with a variety of third-sector and SME organisations, providing you with the opportunity to engage with a huge range of employers.

International students

Our careers advisers are on hand to provide tailored support, resources and coaching to help you research career pathways and opportunities in the UK and your home country.

99%
of postgraduate research graduates and 89% of postgraduate taught graduates who were working in the UK were in highly skilled employment 15 months after the end of their course*



*Source: Graduate Outcomes 2020/21 survey. Contains HESA Data: Copyright Jisc 2023. Jisc cannot accept responsibility for any inferences or conclusions derived by third parties from its data.



Student Futures



First-class facilities

We've undertaken our biggest campus upgrade for a generation
- a £600m investment in our future.

Investing in your future

From elegant Portland stone buildings to contemporary study centres, being a postgraduate student here means that you'll be learning in a dynamic and inspiring educational environment. Our major campus upgrade will provide you with everything you need to get the most from your studies.

Abacws

A purpose-built home for the School of Mathematics and School of Computer Science and Informatics. Including flexible teaching spaces, IT workshops and a cybersecurity lab, this six-storey building has been designed in collaboration with students and staff.

Centre for Student Life

Our £50m Centre for Student Life is home to our student support services, two coffee shops, flexible social learning spaces and study rooms, and a 550-seat lecture theatre.

Two Central Square

A home for the School of Journalism, Media and Culture, Two Central Square is located in the heart of the city centre next to the new BBC Cymru Wales headquarters. The building features six state-of-the-art newsrooms and four editing suites, two TV studios and an innovation lab.

Cochrane Building

An £18m investment at our Heath Park Campus, the Cochrane Building is used by students on medicine and healthcare courses. The building has a clinical skills centre, a high-tech medical simulation centre and a Health Library.

Bute Building

The Welsh School of Architecture's Grade II listed Bute Building has undergone a major investment. New bespoke facilities in the building include a dedicated zone for craft and digital fabrication, a hybrid studio and a Living Lab. The redesign also includes a dedicated space for postgraduate students, including a new auditorium for hosting symposiums and conferences.

Technology

We provide the guidance, technology, tools and resources you will need to support your study and research.

The university network provides access to software, study and collaboration tools, online resources, and services such as email and file storage. Services are also available to support research, including a specialist research data store, file transfer, survey tools and other applications. You can access high performance computing resources and free training courses to use these facilities.

You can access a free subscription to antivirus software and Microsoft Office 365 products for the duration of your studies.

Student app

The Cardiff University Students app helps you keep up to date with university life. The app includes a calendar with your timetable and directions across campus; all of your student data including library loans and print credit; a digital version of your student ID and an easy way to get help and support.

Libraries

With more than 2,500 study spaces you're never far from somewhere comfortable to get your work done.

Our 10 libraries are welcoming, comfortable and equipped with everything you need for your studies.

With study spaces to suit all learning needs, extended opening hours and 24/7 access in our two main sites, you can work at times that suit you best. Our libraries have access to more than 1.1m printed books and 1.5m online resources including journals, digital books, indexes, databases, statistical collections and full text archives.

Our Special Collections and Archives have a vast collection of digitised resources, books, archive documents, photographs, newspapers, illustrations and maps.

Postgraduate Study Zones

In addition to facilities in academic schools, we have two centrally-located postgraduate study zones, one on each campus. They have individual, group study and social spaces and kitchen facilities. Your student ID card will provide you with access to these spaces from day one.



Learning support facilities

Europe's most
powerful brain
scanner

Wales' largest
stock exchange
trading floor

The world's first
Social Science
Research Park (SPARK)



As soon as you enrol as a student, you automatically become a member of Cardiff University Students' Union, one of the biggest, best and most active in Britain.

Students' Union

As a student-led, independent part of the university, the Students' Union is here to support students to thrive and provides a diverse and inclusive range of activities, services and facilities that enrich student life.

Cardiff Students' Union was recently voted 2nd place in the UK in the WhatUni Student Choice Awards 2023 for best Students' Union and is consistently graded in the top 5 for student satisfaction in the UK by students.

The Students' Union is led by an elected full-time student officer team who provide dedicated representation and support for the needs of postgraduate students and researchers.

Spanning the Cathays and Heath Park Campuses, the Students' Union operates a purpose-built facility in the centre of Cardiff that houses cafés, shops, bars, a letting agency, a post office, a bank, a bookshop, a print shop and 24-hour flexible study spaces for students to meet, relax and make the most out of their time at university.

Your student communities

As a student you'll automatically become a member of the postgraduate community at Cardiff Students' Union, one of the biggest, best and most active in Britain.

There's something for everyone to get involved in across our 200 societies and 60 sports clubs. Our student groups are a force for good on campus and in the local

community, running events, fundraising activity and volunteering projects that around 15,000 of you get involved with each year.

Your student voice

The Students' Union works with you in all aspects of your academic life, giving you what you need to shape your education and providing care should things go wrong. This includes recruiting and training over 1,000 Academic Reps each year who serve as a valuable link between the university, the Students' Union and the student body, to ensure that your voice is taken seriously at every level.

Student media

During your time as a postgraduate student or researcher, you'll be able to get involved in our award-winning media, which includes the student newspaper, Gair Rhydd, our lifestyle magazine Quench, and our radio and TV stations Xpress Radio and Cardiff Union TV.

Both Gair Rhydd and Quench also have Welsh-medium sections for Welsh-speaking students.

Your student experience

The Students' Union is also about creating unforgettable student experiences, striving to deliver

exceptional events and services based on what you want from your time at university. From club nights and crazy golfing to trips to local hotspots and events targeted at boosting wellbeing, it's a great chance to meet other students and expand your community.

Your wellbeing and future

The activities the Students' Union provides empower you to look after your own and each other's wellbeing, supporting you to gain the skills, knowledge and resilience to find your place in the world. From helping students find part-time work through the Jobshop service, to providing a free, independent and confidential advice service whenever you need support.

#2

Students' Union in the UK

(WhatUni Student Choice Awards 2023)

Cardiff Welsh Students' Union

The Cardiff Welsh Students' Union represents Welsh speakers, learners and anyone who is interested in the Welsh language and culture during their time in Cardiff University. 2023 will also see the introduction of a Welsh Language, Community and Culture Officer to the Sabbatical Officer team who lead the Students' Union.

Scan and watch:



Cardiff Students' Union

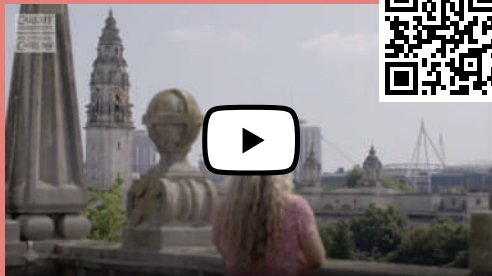


Students' Union

Students' Union



Scan and watch:



This is Cardiff, dyma Caerdydd

Welsh language opportunities

At Cardiff University, we are committed to promoting and celebrating the Welsh language.

The Welsh language is unique to Wales and is at the heart of the university. You'll see and hear the Welsh language on campus and around the city itself.

We are a Russell Group university in a bilingual capital city. You don't need to speak Welsh to live and study in Cardiff, but if you would like to boost your language skills and learn a little *Cymraeg*, we're perfectly placed to help you.

Did you know?

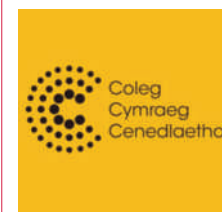
Cardiff University has more Welsh-speaking students than any other university in Wales.*

Learn Welsh

You'll have the opportunity to improve your language skills and learn Welsh during your time at Cardiff University. Our courses are designed to fit around your academic commitments and are free of charge.

Studying in Welsh

Depending on your chosen programme of study, you may be able to study some of your modules in Welsh. You can sit your exams and submit written assessments through the medium of Welsh, whether you've been studying through the medium of Welsh or not.



Coleg Cymraeg Cenedlaethol

Cardiff's branch of the Coleg Cymraeg Cenedlaethol works with the university to provide Welsh language training and studying opportunities for students and staff.

Welsh language societies

There are a number of Welsh societies within Cardiff Students' Union. Y Gym Gym is our largest Welsh society, with almost 200 members. Whether you are a fluent Welsh speaker or are learning the language, joining a Welsh language society is a great way to get to know other Welsh speakers at the university.

82%
of employers in Wales
say that using Welsh adds
value to their business*

*Source: Coleg Cymraeg Cenedlaethol



Welsh language

*Source: StatsCymru



Postgraduate taught study



Postgraduate taught courses

Postgraduate taught courses are more demanding than undergraduate study, requiring you take greater control of your own learning.

A postgraduate qualification is the next step after undergraduate study where you will gain a deeper understanding of your chosen subject.

Choosing your taught course

Deciding which postgraduate taught course is right for you will depend on a number of factors including your areas of interest, current level of study and future career ambitions.

Master's courses

(including MA, MSc, MScEcon, MBA, MTh, LLM and MDA)

Taught master's courses enable you to develop specialist knowledge and expertise in a specific subject area.

The structured teaching programme is delivered through a combination of lectures, seminars, tutorials and directed reading, alongside independent and practical work. The taught component of the degree is followed by a dissertation or final project. Some courses may also include industrial or work-related placements.

A full master's course is normally studied across 12 months full-time or 24 months part-time, and is comprised of 180 credits.

Postgraduate Diploma (PgDip) and Postgraduate Certificate (PgCert)

Postgraduate Diplomas and Certificates are postgraduate-level taught courses structured in a similar way to master's courses but don't normally involve a written dissertation. These courses are often accredited and can be used to build credit towards a master's qualification.

A PgDip is usually studied across 9 months full-time or 18-21 months part-time and is comprised of 120 credits. A PgCert is less extensive than a PgDip and is normally studied across 6-9 months full-time or 12 months part-time. A PgCert is comprised of 60 credits.

You can also choose to study a range of individual modules on a standalone basis.

Part-time study

Studying part-time offers greater flexibility and enables you to study alongside your responsibilities.

With over 60 master's degree programmes available to study part-time, you can balance study with your professional, financial or personal commitments.

Studying part-time also allows you to spread the cost of studying, whilst still experiencing all the benefits and support enjoyed by full-time students.





Why study a postgraduate taught course?

Whether you're looking to boost your prospects after graduation, change direction to follow a new career path or make sure you get ahead of the competition, a postgraduate taught course can help you achieve your goals.

Enhance your career prospects

A postgraduate qualification is one of the most effective ways to advance your career to a higher level. The variety of skills and expertise gained from your course can improve your job prospects, maximise your chance of securing work in a specific field and increase your earning potential.

Postgraduates typically
earn £6,500 more per year
than undergraduates.

Graduate labour market statistics, 2022

Achieve professional accreditation

If you need to gain professional accreditation to reach the next stage of your career, a postgraduate taught course can help you achieve this. We offer a variety of courses leading to professional accreditation, some of which can be studied part-time alongside your employment.

Change your career path with a conversion course

If your undergraduate degree is not the field you want to work in, a conversion course allows you to upskill in a different area so that you can follow a new career path. You'll find all of our conversion courses marked within the course directory.

Further explore a subject you are passionate about

If you're coming to the end of your undergraduate studies but you still have the desire to learn or carry out research, a postgraduate taught course can satisfy your intellectual curiosity by allowing you to explore a subject in more depth.

Develop expert knowledge in a specialist area

Postgraduate taught study gives you the chance to really specialise in your field and advance your knowledge of a particular subject area.

Prepare for postgraduate research study

Studying a postgraduate taught course can give you the opportunity to continue to enhance your general subject knowledge and experience advanced independent research projects on a smaller scale to what would be expected for a PhD. This can help prepare you and bridge the gap between your undergraduate studies and a postgraduate research programme.



Undergrad to postgrad

The transition from undergraduate to postgraduate study can seem daunting at first but a little preparation and knowing what to expect will set you on the path to success.

Longer essays and assignments

It's likely that your essays and assignments will be longer and require more research. This makes postgraduate study ideal for developing your independent and critical thinking skills.

Note-taking

You'll be doing a lot of reading and research, so taking good notes and keeping them organised will be really important for working effectively. Research different types of note-taking and templates to equip yourself with the right tools for the job.

Postgraduate study differs from undergraduate because of the emphasis on individual development. More is now expected of me in conducting my own independent research, but this is a good thing as it gives me more freedom to develop my understanding of areas of my work that interest me more.

Isaac Saunders,
MSc Human Resource
Management

Time management

Organisation and time management will become key during your postgraduate study. You will probably be working on several different projects at once so make sure you create a diary to plan your projects.

Group work and presentations

Working on group projects and presenting your work is often a feature of postgraduate study. Having a good understanding of how to work effectively in a group, such as defining and allocating specific tasks, will help keep you on track.

Initially I found my postgraduate course really full on. There were a lot more contact hours and the course was a lot more intense, with more frequent assessments and more independent study. At first I didn't think I could do it but after a few weeks I settled into the new workload. My advice to other students would be to plan your time. Don't leave things to the last minute and prioritise your workload.

Ruby Bird, Psychology (MSc)

The main thing to get used to in postgraduate is that your work is much more independent and you are expected to know how to do a lot of things already, or find them out for yourself. No one tells you how to approach or write a certain type of assessment. The assignments are challenging but I have had significantly better grades so far than I did for undergrad - if you take on the challenge and give it a go you'll be rewarded well.

The class sizes are much smaller than undergrad. Some of my lectures only have about eight people which is nice in terms of the engagement it facilitates. I have found most tutors to be very responsive to emails and keen to help students where they can which has been a big help.

Naomi Green, Sustainability,
Planning and Environmental
Policy (MSc)



Undergrad to postgrad



Conversion courses

Broaden your horizons and open up new career paths with a conversion course.

Thinking of heading in a different direction, pursuing a new career or returning to study a different subject? A conversion course can make this a reality.

We offer conversion courses in a range of subjects including:

- Archaeology and Conservation
- Business and Marketing
- Computer Science and Informatics
- Creative Writing
- Geography and Planning
- Journalism, Media and Culture
- Law
- Occupational Therapy
- Physiotherapy
- Psychology
- Welsh

Grow your skillset

To help you further your career aspirations, a conversion course allows you to develop your skills in a new area and develop your knowledge in a new subject. Combining a new subject with your undergraduate degree can help to open new career paths and opportunities.

Fast-track a career change

If your undergraduate degree is not the field you want to work in, a conversion course allows you to upskill in a different area so that you can follow a new career path.

Increase your prospects of securing employment in a specific field

The variety of skills and expertise gained from your conversion course could allow you to significantly improve your job prospects and increase your chance of securing work in a specific field.



Conversion courses



Scan and watch:



Conversion courses



We understand that advancing your education to postgraduate level is a significant financial commitment. That's why, if you're considering a postgraduate course, it's a good idea to consider your funding options as soon as possible. If you need help from the experts, our Student Funding and Advice team can provide you with free, impartial advice on all aspects of funding your study.

Funding your taught course

We understand that postgraduate study is a significant financial commitment. We recommend considering your funding options as soon as possible.

£3,000 master's scholarships

Our competitive Master's Scholarships scheme supports UK students in funding your postgraduate study, with each scholarship worth a £3,000 tuition fee discount. Conditions apply. Application deadlines for 2024 entry are 8 April and 8 July.

I applied for a Master's Excellence Scholarship and this cut my fees, which really helped relieve financial pressure during my degree.

Matilda, MSc Computing

Alumni discount

All Cardiff University graduates are eligible for an alumni discount on master's programmes starting in September 2024. Both full-time and part-time programmes that lead to a full master's degree are eligible for the discount. Conditions apply.

£1,000 tuition fee discount for UK students

£2,000 tuition fee discount for international students

UK Government postgraduate funding for master's study

Postgraduate loans from the Welsh and UK governments are available to support UK students who fulfil the eligibility criteria. Different loans apply depending on where you are domiciled in the UK. For entry in 2023, the following was available:

- £18,770 for students from Wales (as a combination of loan and grants)
- £12,167 for students from England

International scholarships

We have a range of highly prestigious scholarship programmes to support exceptional international students, including our Vice Chancellor's International Scholarship scheme.

Additional funding sources

If you're an international student, make sure you investigate funding opportunities offered within your home country via the British Council and other external funding providers. Our Unistaff Jobshop can help you secure part-time, casual or regular employment within the university and external organisations. Numerous charities, trusts and foundations may offer funding for postgraduate taught study.

Student Funding and Advice team

If you need help from the experts, our Student Funding and Advice team can provide you with free, impartial advice on all aspects of funding your study.

Tuition fees

Tuition fees vary depending on the course you choose and whether you're a UK or international student. You can find full details of tuition fees on the individual postgraduate taught course pages on our website.

The Alumni discount was the biggest factor in choosing to study my specific master's. Being able to reduce my fees was a huge help.

Tom, MSc Spatial Planning and Development

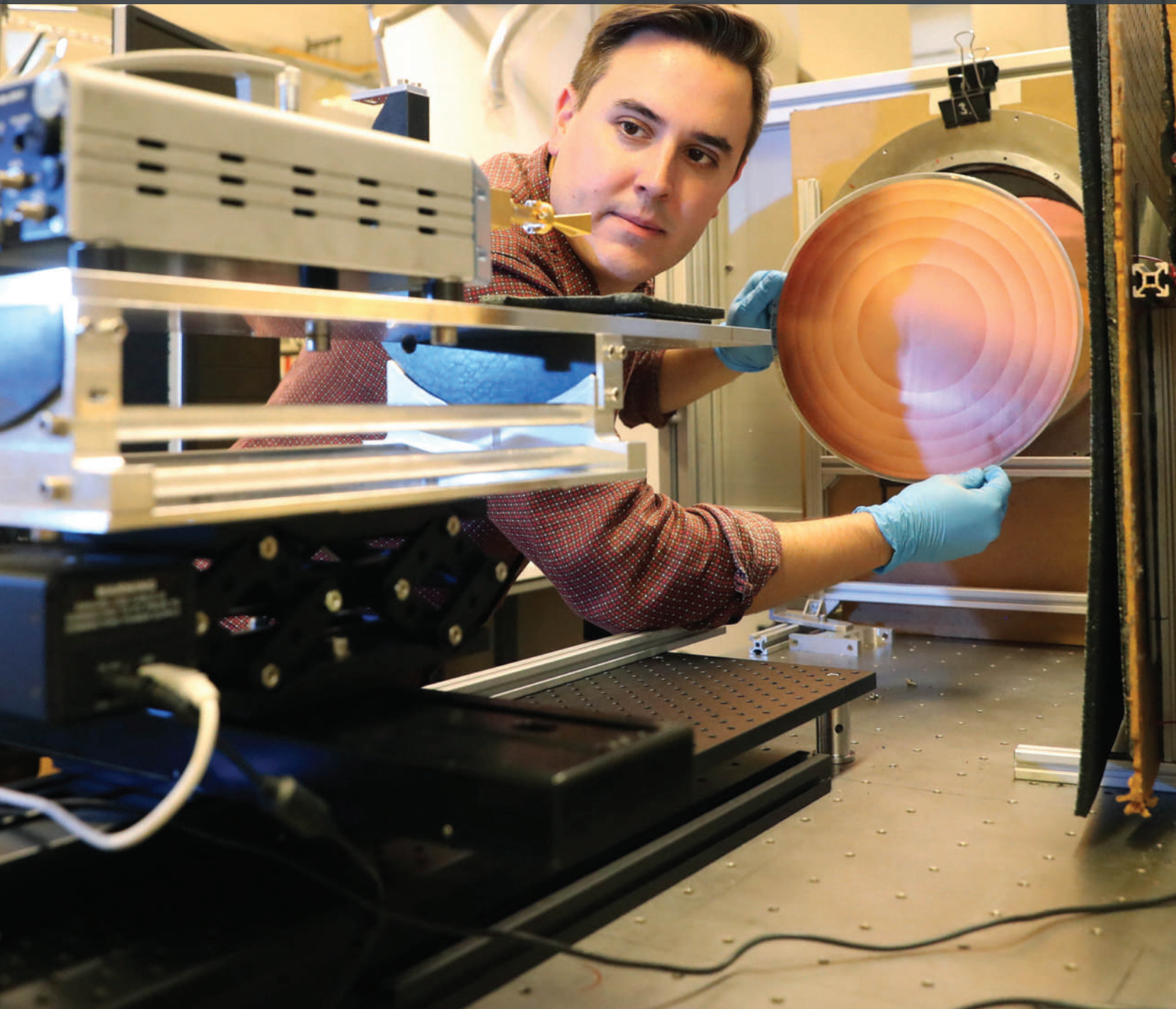


Funding



Advice and money

Postgraduate research study



Postgraduate research programmes

A research programme at Cardiff University gives you the opportunity to investigate a specific topic in real depth amongst field-leading researchers with first-class facilities.

Completing a research programme will demonstrate a high level of skill and a deep understanding of your subject.

Choosing your research programme

Research programmes (including PhD and MPhil)

Research programmes involve the in-depth study of a specified field over an extensive period.

The results of this research are written in the form of a thesis or dissertation, demonstrating your original contribution of knowledge or practice to your chosen discipline. Opportunities for supervised research are available in all our academic schools.

A PhD will typically take three years full-time, and an MPhil one year. The majority of our research programmes can also be studied part-time.

We encourage you to explore opportunities in academic schools outside your original degree subject as you may find that many of them offer research areas that link with your area of interest.

The type of research you are engaged in and your experience of undertaking postgraduate research will differ depending on whether you are studying a lab-based research programme or one within the arts, humanities and social sciences.

Research programmes with taught element (including MRes and Professional Doctorates)

We offer a number of research programmes that contain some structured teaching, such as our Master of Research (MRes) programme in Biosciences, and Professional Doctorates including the DClinPsy Clinical Psychology and our PhD in Economics.

These programmes provide advanced research training and specialist knowledge before you embark on your specific research project.



Postgraduate research



Why study a postgraduate research programme?

Our postgraduate research programmes provide you with the opportunity to prepare for both academic and non-academic careers, immerse yourself in a specific area of interest, acquire new transferable skills and make a valuable contribution to new knowledge.

Prepare for your career

A postgraduate research programme is an excellent way to improve your employment prospects. The dedication, skills and knowledge needed to complete these programmes provides the perfect career preparation. A PhD is usually one of the main requirements for a career in academia, demonstrating that you have the necessary expertise to succeed in this field. The skills, knowledge and expertise gained will also help you stand out from the crowd in positions outside of academia.

Immerse yourself in your area of interest

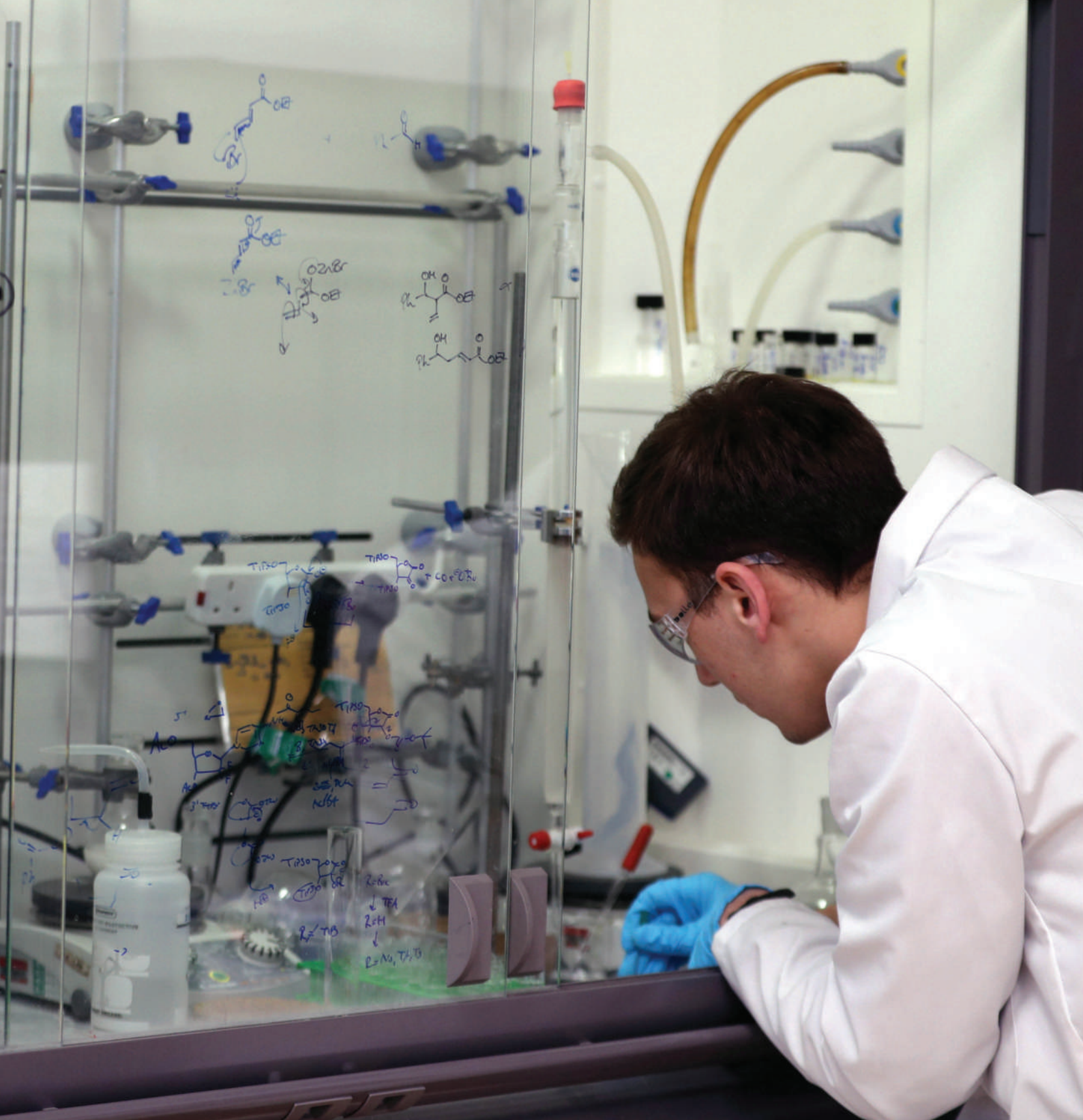
If you want to continue exploring your subject of interest beyond a postgraduate taught course, research study gives you the opportunity to immerse yourself even further. A postgraduate research programme is the ideal platform to become an expert in your area of interest.

Acquire transferable skills

Postgraduate research study is more than writing a dissertation and completing your viva. It also offers additional benefits such as the acquisition of transferable skills such as public speaking, teaching, networking and time management.

Make a valuable contribution to new knowledge

Studying a postgraduate research programme provides the unique opportunity to make a valuable contribution to new knowledge in your specific area of interest. This sets these programmes apart from other qualifications, enabling your work to potentially become a point of reference for academics and students in the future.



Doctoral Training Initiatives

Our research-intensive profile and reputation enables us to secure funding for doctoral study from a wide range of sources including UK Research Councils, charities and trusts, governmental bodies and industry.

We are currently leading or participating in range of specific doctoral training initiatives, such as UK Research Council sponsored Doctoral Training Partnerships (DTPs) or Centres for Doctoral Training (CDTs). These span many of our areas of academic and research strengths.

DTPs and CDTs bring together diverse areas of expertise which aim to train doctoral researchers with the skills, knowledge and confidence to become successful researchers, and who are able to tackle today's big questions and future challenges. Often, they also offer opportunities for broader training or development such as language learning, overseas research visits or placements with non-academic partners.

We are currently offering studentships at the following doctoral training initiatives:

Arts, Humanities and Social Sciences

- AHRC South, West and Wales DTP
- ESRC Wales DTP

Biomedical and Life Sciences

- BBSRC South West Bioscience DTP
- MRC GW4 BioMed DTP
- GW4 Clinical Academic Training Programme for Health Professionals (GW4-CAT-HP)
- NERC CDT in Ecotoxicological Risk Assessment Towards Chemical Use (ECORISC)
- NERC GW4+ DTP in Earth and Environmental Sciences

Physical Sciences and Engineering

- EPSRC DTP
- EPSRC CDT Resilient Decarbonised Fuel Energy Systems
- NERC GW4+ DTP in Earth and Environmental Sciences
- UKRI CDT in Artificial Intelligence, Machine Learning and Advanced Computing



Doctoral Training Initiatives

Doctoral Academy

The Doctoral Academy is a community dedicated to all aspects of postgraduate research at Cardiff University.

The Doctoral Academy is the hub of interdisciplinary postgraduate research student activity. They offer a comprehensive programme of training and interdisciplinary and community events to facilitate your development as a researcher, help you prepare for your future career and develop your personal and professional networks.

Their aim is to help you, the researcher, to have an outstanding student experience and to benefit from being part of a postgraduate community where you can develop research excellence and enhance your employability.

Based just a few doors away from the Centre for Student Life, the Doctoral Academy has bookable and drop-in workstations, social space, a kitchen, hybrid meeting rooms and a multi-functional training and collaborative space.

The Doctoral Academy Programme

The Doctoral Academy offers a comprehensive programme of events throughout the year including an induction for new students, formal training workshops, wellbeing and careers activities, informal lunchtime roundtables, online learning, community events and student-led activity.

You will be fully supported on your journey as a new researcher, helping build confidence skills, persistence and a fulfilling career, as well as meeting other students who will become friends, colleagues and perhaps even collaborators.

Training and development

There are regular training workshops and events held throughout the year, with an emphasis on interdisciplinarity. Topics covered include how to write literature reviews, how to find alternative funding streams, qualitative interviewing technique, managing stress during your PhD and more.

GW4

Cardiff University is part of the GW4 Alliance, bringing together four of the most research-intensive and innovative universities in the UK: Cardiff, Bath, Bristol and Exeter. Being part of this alliance allows us to offer you access to specialist, flagship equipment and opportunities to build your wider network.



Doctoral Academy



The Doctoral Academy offers so many opportunities to acquire new skills and sharpen existing ones.

I appreciate that the Doctoral Academy is not just about making us better scholars, but genuinely more well-rounded and happy individuals. The world of academia can be harsh and isolating, but the Doctoral Academy is an oasis where students from different academic backgrounds can come together and realise that we aren't alone in this, not by a long shot. I have made friendships with people I cherish that I would have never encountered had it not been for the common ground of hands-on workshops, inspiring seminars and interdisciplinary conferences.

Adelle, School of History, Archaeology and Religion



Our Community

- Annual student-run conferences give postgraduate researchers the opportunity to present their work and to share and develop their research interests. Conferences are organised by a committee of students, offering an excellent opportunity to develop your skills and add a boost to your CV.
- They hold regular Writers' Retreats, offering support and encouragement for writing your thesis.
- The Doctoral Academy Blog allows you to showcase your research and discover the diversity of our research community.





Funding your research programme

There are a wide range of options available for you to fund your research programme.

Funding options for postgraduate research programmes include Research Council studentships and doctoral loans, independent charities and a wide range of other PhD scholarships. If you need help from the experts, our Student Funding and Advice team can provide you with free, impartial advice on all aspects of funding your study.

Doctoral Training Initiatives (UK Research Council funding)

UK Research Council funding available through these initiatives normally includes full UK tuition fees, stipend and research training support grant. For 2023 entry the minimum value of the annual stipend was £18,622. These opportunities tend to be open for applications between October - November and January - February.

UK Government doctoral loans

Doctoral loans from the UK Government are available to support UK students who fulfil the relevant eligibility criteria. For entry in 2023, UK students could receive a loan of up to £28,673. Different loans apply depending on where you are domiciled in the UK.

Additional funding sources

Throughout the year, we advertise a range of funded PhD projects on our website

If you're an international student, make sure you investigate funding opportunities offered within your home country via the British Council and other external funding providers

Our Unistaff Jobshop can help you secure part-time, casual or regular employment within both the university and external organisations

Numerous charities, trusts and foundations may offer funding for postgraduate research study.

What does my programme cost?

Tuition fees vary depending on the programme you choose and whether you're a UK or international student. You can find full details of tuition fees for your research programme on our website.



Funding



How to apply

Application to the majority of our postgraduate taught courses and research programmes are made directly through our online application service.

Once you've submitted your application you'll have access to the online applicant portal where you can track your application. We'll let you know through the online applicant portal the status of your application. When we've made a decision we'll let you know via email with the details of your offer, including any conditions or additional information we need.

Your documents

All documents must be in English, Welsh or have a certified translation. It is your responsibility to supply us with:

- Your degree certificate and transcripts. Interim transcripts and the course end date should be provided if you haven't graduated yet
- A personal statement on why you are interested in studying your taught course or research programme. Some require this in a specific format so be sure to check our website for details
- References, if stated in the entry requirements. These will need to be signed and dated
- For applicants who need a student visa, evidence of an acceptable English language qualification or test
- For postgraduate research programmes, details of your proposed topic/research area.

Some taught courses and research programmes will have additional requirements such as professional registration. This will always be stated in the admissions criteria.

Where we can't make a decision, and time permits in the application cycle, we will either get in touch to ask you to provide additional information or make you a conditional offer.

If you can't supply the required documents when you apply, you can provide them at a later date. If you have been made an offer, these must be provided at least two weeks before the official course start date.

Entry requirements

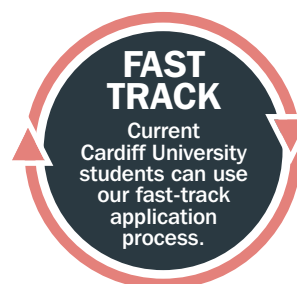
You should check the admissions criteria on our website. You will normally be required to have a good undergraduate degree, or an equivalent from a university outside the UK, but other relevant qualifications and experience may be accepted. The admissions criteria will state which degree subjects will be accepted.

Our postgraduate taught conversion courses allow you to study a subject unrelated to your undergraduate degree. There may be additional criteria for some courses and programmes, such as work experience, which will be stated on the individual course or programme page.

English language

All overseas applicants whose first language is not English must demonstrate that they meet our English language requirements. For the majority of applicants this will be an IELTS of 6.5 with a 5.5 in each subskill (or equivalent). Check your chosen programme to confirm the exact requirements of your course.

If you have not already taken an English language test, you can join our pre-session English programme. See page 13 for more details.



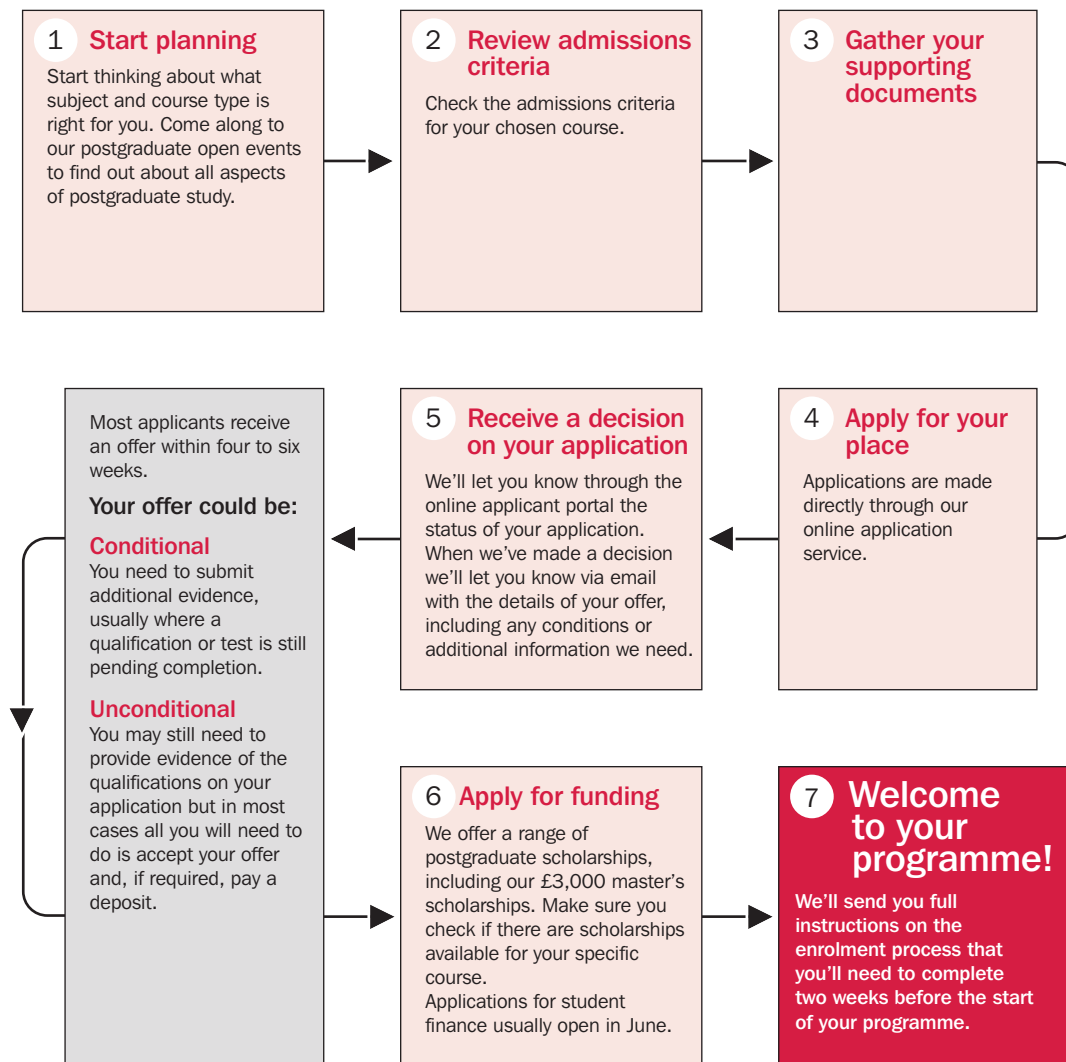
Help with your application

Our team of experienced admissions staff can help you through the application process.

Please do not hesitate to get in touch with them if you have any questions.



Applying for a taught course



Application deadlines

We recommend that you apply as early as possible to secure your place as, for most programmes, we allocate places on a first come, first served basis.

September 2024 entry

UK: 31 August 2024

International: 31 August 2024

Some programmes have earlier deadlines, which will be advertised in the programme information on our website.

Are you applying for our Social Work (MA)?

Apply through UCAS before the deadline on 31 January 2024.

Applying for a research programme

Typically there are two routes to apply for a postgraduate research programme. You can either apply to a pre-defined project, or you can apply to propose your own research.

Pre-defined studentship or project

Our academic schools advertise studentships and research projects that have been proposed by supervisors, many of which are funded. You should learn more about the potential supervisor and project before you apply.

1 Find and identify your studentship or project

Studentships and projects are advertised on our website. Be sure to check the funding status of the project and your eligibility.



2 Review admissions criteria

Check the admissions criteria for your chosen programme.

3 Gather your supporting documents

Some studentships or projects will require you to submit your own research proposal along with your other documents.

4 Submit your application

Applications are typically made either through our online application service or directly to Doctoral Training Initiatives.

Self-designed research project

You can propose your own research project rather than joining an existing studentship or project. You will need to submit your own research proposal and identify a supervisor.

1 Choose which research programme is right for you

2 Contact potential supervisors

Before submitting your application, we recommend that you discuss your proposal with the school and a potential supervisor. They may be able to suggest improvements, direct you to a more suitable supervisor and help you identify funding opportunities.



3 Explore your funding options

There are a number of options for self-funding a research project, such as Doctoral Loans. Read more on p59.

4 Write your research proposal

5 Gather your supporting documents

6 Submit your application

Applications are made directly through our online application service.

Writing your research proposal

A research proposal should outline your proposed area of study and what you hope to achieve through your research. You should contact the academic school that your area of interest is based within so they can provide you with specific requirements. As a general guide, a research proposal may include:

- Title for the proposed research project
- Literature review
- Significance of research
- List of key academic publications
- A concise summary of the research project
- Aims and questions to be addressed
- Methodology and design

Programme	Award	Full-time / Part-time	Mode of Study	Master's Scholarships	Alumni Discount
Archaeology and conservation					
T Archaeological Science	MSc	FT / PT		✓	✓
T Archaeology	MA	FT / PT		✓	✓
T Care of Collections	MSc	FT / PT		✓	✓
T Conservation Practice ✕	MSc	FT		✓	✓
T Professional Conservation	MSc	FT / PT		✓	✓
R Archaeology	PhD, MPhil	FT / PT			
R Conservation	PhD, MPhil	FT / PT			

Architecture

T Architectural Design	MA	FT		✓	✓
T Architectural Studies	MArch	FT			
T Architecture: Professional Practice	PgDip	FT / PT	BL / DL		
T Computational Methods in Architecture	MSc	FT		✓	✓
T Environmental Design of Buildings	MSc	FT / PT	DL		
T Environmental Design of Buildings	MSc	FT / PT		✓	✓
T Master of Design Administration	MDA	FT / PT	DL		
T Master of Design Administration	MDA	FT / PT	BL	✓	✓
T Sustainable Building Conservation	MSc	FT / PT		✓	✓
T Sustainable Mega-Buildings	MSc	FT / PT		✓	✓
T Urban Design	MA	FT		✓	✓
R Architecture	PhD, MPhil	FT / PT			
R Creative Practice in Architecture	PhD	FT / PT			

Biosciences

T Big Data Biology	MSc	FT		✓	✓
T Global Ecology and Conservation	MSc	FT		✓	✓
R Biosciences	MRes	FT		✓	✓
R Biosciences	PhD, MPhil, MD	FT / PT			

Business, management and finance

T Accounting and Finance	MSc	FT		✓	✓
T Business Administration	MBA	FT / PT		✓	✓
T Business Administration with Artificial Intelligence	MBA	FT		✓	✓
T Business Management ✕	MSc	FT		✓	✓
T Business Management with a Professional Placement Year ✕	MSc	FT		✓	✓
T Business Strategy and Entrepreneurship ✕	MSc	FT		✓	✓
T Economics	MSc	FT		✓	✓
T Finance	MSc	FT		✓	✓
T Financial Economics	MSc	FT		✓	✓
T Human Resource Management	MSc	FT / PT		✓	✓
T International Economics, Banking and Finance	MSc	FT		✓	✓
T International Human Resource Management	MSc	FT		✓	✓
T International Management	MSc	FT		✓	✓
T Logistics and Operations Management	MSc	FT		✓	✓
T Maritime Policy and Shipping Management	MSc	FT		✓	✓
T Marketing ✕	MSc	FT		✓	✓
T Social Science Research Methods (Management and Business Studies)	MSc	FT / PT		✓	✓
T Strategic Marketing	MSc	FT		✓	✓
T Sustainable Supply Chain Management	MSc	FT		✓	✓
R Business Studies	PhD	FT / PT			
R Economics	PhD	FT			

Chemistry

T Advanced Chemistry	MSc	FT		✓	✓
T Medicinal Chemistry	MSc	FT / PT		✓	✓
R Chemistry	PhD, MPhil	FT / PT			

T = Taught | R = Research | ✕ Conversion Course | FT = Full-time | PT = Part-time | DL = Distance Learning | BL = Blended Learning

Programme	Award	Full-time / Part-time	Mode of Study	Master's Scholarships	Alumni Discount
Computer science and informatics					
T Advanced Computer Science	MSc	FT / PT		✓	✓
T Advanced Computer Science with a Professional Placement Year	MSc	FT		✓	✓
T Artificial Intelligence	MSc	FT		✓	✓
T Artificial Intelligence with a Professional Placement Year	MSc	FT		✓	✓
T Business Administration with Artificial Intelligence	MBA	FT		✓	✓
T Computational and Data Journalism ✕	MSc	FT		✓	✓
T Computing and IT Management ✕	MSc	FT / PT		✓	✓
T Computing and IT Management with Placement ✕	MSc	FT		✓	✓
T Computing ✕	MSc	FT / PT		✓	✓
T Computing with Placement ✕	MSc	FT		✓	✓
T Cyber Security and Technology	MSc	FT	BL	✓	✓
T Cyber Security	MSc	FT / PT		✓	✓
T Data Analytics for Government	MSc	FT		✓	✓
T Data Science and Analytics	MSc	FT / PT		✓	✓
T Natural Language Processing	MSc	FT		✓	✓
T Software Engineering ✕	MSc	FT		✓	✓
T Software Engineering with a Professional Placement Year ✕	MSc	FT		✓	✓
R Computer Science and Informatics	PhD, MPhil	FT / PT			

Dentistry

T Clinical Dentistry (Endodontology)	MClinDent	FT			✓
T Clinical Dentistry (Prosthodontics)	MClinDent	FT			✓
T Implantology	MSc	FT		✓	✓
T Oral Biology	MSc	FT		✓	✓
T Orthodontics	MScD	FT		✓	✓
T Tissue Engineering and Regenerative Medicine	MSc	FT		✓	✓
R Dentistry	PhD, MPhil	FT / PT			
R PhD with a Clinical Component	PhD	FT / PT			

Earth and environmental sciences

T Applied Environmental Geology	MSc	FT		✓	✓
T Environmental Hazards	MSc	FT		✓	✓
T Water in a Changing World	MSc	FT		✓	✓
R Earth Sciences	PhD, MPhil	FT / PT			

Engineering

T Advanced Mechanical Engineering	MSc	FT		✓	✓
T Building and Infrastructure Information Modelling (BIM) for Smart Engineering	MSc	FT		✓	✓
T Civil and Geoenvironmental Engineering	MSc	FT / PT		✓	✓
T Civil and Water Engineering	MSc	FT / PT		✓	✓
T Civil Engineering	MSc	FT / PT		✓	✓
T Compound Semiconductor Electronics	MSc	FT		✓	✓
T Electrical Energy Systems	MSc	FT		✓	✓
T Engineering Net Zero	MSc	FT		✓	✓
T Manufacturing Engineering Innovation & Management	MSc	FT		✓	✓
T Structural Engineering	MSc	FT / PT		✓	✓
T Sustainable Energy and Environment	MSc	FT / PT		✓	✓
T Wireless and Microwave Communication Engineering	MSc	FT / PT		✓	✓
T ^T / _R Wireless and Microwave Communication Engineering with a Research Year	MSc	FT		✓	✓
T Wireless and Microwave Communication Engineering with a Year in Industry	MSc	FT		✓	✓
T Wireless and Microwave Communication Engineering	MRes	FT		✓	✓
R Engineering	PhD, MPhil	FT / PT			

T = Taught | R = Research | ✕ Conversion Course | FT = Full-time | PT = Part-time | DL = Distance Learning | BL = Blended Learning

Programme	Award	Full-time / Part-time	Mode of Study	Master's Scholarships	Alumni Discount
-----------	-------	-----------------------	---------------	-----------------------	-----------------

English language and linguistics

T Applied Linguistics	MA	FT / PT		✓	✓
T Forensic Linguistics	MA	FT / PT		✓	✓
T Language and Communication Research	MA	FT / PT		✓	✓
T Language and Linguistics	MA	FT / PT		✓	✓
R Critical and Cultural Theory	PhD, MPhil	FT / PT			
R Language and Communication	PhD, MPhil	FT / PT			

English literature and creative writing

T Creative Writing ✕	MA	FT		✓	✓
T English Literature	MA	FT / PT		✓	✓
R Creative and Critical Writing	PhD	FT / PT			
R Critical and Cultural Theory	PhD, MPhil	FT / PT			
R English Literature	PhD, MPhil	FT / PT			

Geography and planning

T Environment and Development	MSc	FT		✓	✓
T International Planning and Development ✕	MSc	FT		✓	✓
T International Planning and Urban Design	MSc	FT		✓	✓
T Planning Practice	PgCert	PT			
T Social Science Research Methods (Environmental Planning)	MSc	FT / PT		✓	✓
T Spatial Planning and Development ✕	MSc	FT / PT		✓	✓
T Sustainability Planning and Environmental Policy	MSc	FT / PT		✓	✓
T Transport and Planning	MSc	FT		✓	✓
T Urban and Regional Development	MSc	FT / PT		✓	✓
T Urban Design	MA	FT		✓	✓
R Geography and Planning	PhD	FT / PT			

Healthcare sciences

T Advanced Clinical Practice	MSc	FT / PT	BL	✓	✓
T Advanced Healthcare Practice	MSc	FT / PT	BL	✓	✓
T Community Health Studies (SPQ)*	PgDip	FT / PT			
T Independent / Supplementary Prescribing	PgCert	PT			
T Independent / Supplementary Prescribing	PgCert	PT	BL	✓	✓
T Pre-Registration Occupational Therapy ✕	MSc	FT			
T Specialist Community Public Health Nursing (Health Visiting)*	MSc	FT / PT			
R Healthcare Sciences	PhD, MPhil	FT / PT			

History and ancient history

T History	MA	FT / PT		✓	✓
R Ancient History	PhD, MPhil	FT / PT			
R History and Welsh History	PhD, MPhil	FT / PT			

Journalism, media and culture

T Broadcast Journalism	MA	FT		✓	✓
T Computational and Data Journalism ✕	MSc	FT		✓	✓
T Cultural and Creative Industries	MA	FT		✓	✓
T Digital Documentaries	MA	FT		✓	✓
T Digital Media and Society	MA	FT		✓	✓
T International Journalism ✕	MA	FT		✓	✓
T International Public Relations and Global Communications Management ✕	MA	FT		✓	✓
T Journalism, Media And Communications	MA	FT		✓	✓
T Magazine Journalism	MA	FT		✓	✓
T News Journalism	MA	FT		✓	✓
T Political Communication ✕	MA	FT		✓	✓
R Journalism, Media and Culture	PhD, MPhil	FT / PT			

* Subject to validation

T = Taught | R = Research | ✕ Conversion Course | FT = Full-time | PT = Part-time | DL = Distance Learning | BL = Blended Learning

Programme	Award	Full-time / Part-time	Mode of Study	Master's Scholarships	Alumni Discount
-----------	-------	-----------------------	---------------	-----------------------	-----------------

Law

T Bar Training Course	LLM, PgDip	FT		✓	✓
T Canon Law	LLM	PT	DL		
T Governance and Devolution	LLM	FT		✓	✓
T Graduate Diploma in Law ✕	GDL	FT			
T Human Rights Law	LLM	FT		✓	✓
T Intellectual Property Law	LLM	FT		✓	✓
T International Commercial Law	LLM	FT		✓	✓
T Law	LLM	FT		✓	✓
T Legal Aspects of Medical Practice	LLM	PT	BL	✓	✓
T Legal Practice Course	LLM, PgDip	FT		✓	✓
T Shipping Law	LLM	FT		✓	✓
T Social Science Research Methods (Social-Legal) (Law)	MSc	FT / PT		✓	✓
R Law	PhD, MPhil	FT / PT			

Mathematics

T Data Analytics for Government	MSc	FT		✓	✓
T Data Science and Analytics	MSc	FT / PT		✓	✓
T Mathematics	MSc	FT		✓	✓
T Operational Research and Applied Statistics	MSc	FT / PT		✓	✓
T Operational Research, Applied Statistics and Financial Risk	MSc	FT / PT		✓	✓
R Mathematics	PhD, MPhil	FT / PT			

MBA

T Business Administration	MBA	FT / PT		✓	✓
T Business Administration with Artificial Intelligence	MBA	FT		✓	✓

Medicine

T Advanced Surgical Practice	MSc	PT	DL		
T Advancing Practice in Neonatology	MSc	PT	DL		
T Applied and Experimental Clinical Immunology	MSc	FT		✓	✓
T Applied Bioinformatics and Genetic Epidemiology	MSc	FT / PT		✓	✓
T Applied Bioinformatics and Genomics	MSc	FT / PT		✓	✓
T Clinical Dermatology	MSc	FT		✓	✓
T Clinical Geriatrics	MSc	PT	DL		
T Critical Care	MSc	PT	DL		
T Diabetes Practice	MSc	PT	DL		
T Genetic and Genomic Counselling	MSc	PT	DL		
T Medical Education	MSc, PgDip	FT / PT		✓	✓
T Medical Education	MSc, PgDip, PgCert	PT	DL		
T Medical Toxicology	MSc, PgDip, PgCert	FT / PT	DL		
T Pain Management	MSc	FT / PT	DL		
T Palliative Medicine for Health Care Professionals	MSc	PT	DL		
T Practical Dermatology	MSc, PgDip	FT / PT	DL		
T Psychiatry	MSc	FT / PT	DL		
T Public Health	MPH	FT / PT		✓	✓
T Wound Healing and Tissue Repair	MSc	PT	DL		
R Medicine	PhD, MPhil, MD	FT / PT			

Modern languages and translation

T Global Cultures	MA	FT		✓	✓
T Translation Studies	MA	FT / PT		✓	✓
R Languages and Translation Studies	PhD, MPhil	FT / PT			

Music

T Music	MA	FT / PT		✓	✓
R Music	PhD, MPhil	FT / PT			

T = Taught | R = Research | ✕ Conversion Course | FT = Full-time | PT = Part-time | DL = Distance Learning | BL = Blended Learning

Programme	Award	Full-time / Part-time	Mode of Study	Master's Scholarships	Alumni Discount
-----------	-------	-----------------------	---------------	-----------------------	-----------------

Occupational therapy

T Occupational Therapy	MSc	FT / PT		✓	✓
T Pre-Registration Occupational Therapy ✕	MSc	FT			

Optometry and vision sciences

T Clinical Optometry	MSc	FT / PT	BL	✓	✓
T Therapeutic Prescribing for Optometrists	PgCert	PT	BL		
R Vision Sciences	PhD, MPhil	FT / PT			

Pharmacy and pharmaceutical sciences

T Cancer Biology and Therapeutics	MSc	FT		✓	✓
T Clinical Pharmacy	MSc, PgDip	PT	BL / DL		
T Clinical Research	MSc	PT	DL		
T Pharmacy and Pharmaceutical Sciences	PhD, MPhil, MD	FT / PT			

Philosophy

T Philosophy	MA	FT / PT		✓	✓
R Philosophy	PhD, MPhil	FT / PT			

Physics and astronomy

T Astrophysics	MSc	FT		✓	✓
T Compound Semiconductor Physics	MSc	FT		✓	✓
T Data Intensive Astrophysics	MSc	FT		✓	✓
T Data Intensive Physics	MSc	FT		✓	✓
T Gravitational Wave Physics	MSc	FT		✓	✓
T Physics	MSc	FT		✓	✓
R Physics and Astronomy	PhD, MPhil	FT / PT			

Physiotherapy

T Physiotherapy	MSc	FT / PT		✓	✓
T Pre-Registration Physiotherapy ✕	MSc	FT			
T Sport and Exercise Physiotherapy	MSc	FT / PT		✓	✓

Politics and international relations

T Governance and Devolution	LLM	FT		✓	✓
T International Relations	MA	FT / PT		✓	✓
T Politics and Public Policy	MA	FT / PT		✓	✓
T Social Science Research Methods (International Relations)	MSc	FT / PT		✓	✓
T Social Science Research Methods (Politics)	MSc	FT / PT		✓	✓
T Welsh Government and Politics	MA	FT / PT		✓	✓
R Politics and International Relations	PhD, MPhil	FT / PT			

Psychology

T Children's Psychological Disorders	MSc	FT		✓	✓
T Cognitive and Behavioural Therapies	PgDip, PgCert	PT			
T Psychology	MSc	FT		✓	✓
T Social Science Research Methods (Psychology)	MSc	FT / PT		✓	✓
R Clinical Psychology	DClinPsy	FT			
R Doctorate in Educational Psychology	DEdPsy	FT			
R Psychology	PhD	FT / PT			

Radiography

T Radiographic Reporting	PgCert	PT			
T Radiography	MSc	FT / PT		✓	✓

Religious studies and theology

T Theology	MTh	FT / PT		✓	✓
R Religious and Theological Studies	PhD, MPhil	FT / PT			

T = Taught | R = Research | ✕ Conversion Course | FT = Full-time | PT = Part-time | DL = Distance Learning | BL = Blended Learning

Programme	Award	Full-time / Part-time	Mode of Study	Master's Scholarships	Alumni Discount
-----------	-------	-----------------------	---------------	-----------------------	-----------------

Social sciences

T Education	MSc	FT		✓	✓
T International Criminology and Criminal Justice	MSc	FT		✓	✓
T Social and Public Policy	MSc	FT		✓	✓
T Social Science Research Methods (Criminology)	MSc	FT / PT		✓	✓
T Social Science Research Methods (Educational Studies)	MSc	FT / PT		✓	✓
T Social Science Research Methods (Environmental Planning)	MSc	FT / PT		✓	✓
T Social Science Research Methods (International Relations)	MSc	FT / PT		✓	✓
T Social Science Research Methods (Management and Business Studies)	MSc	FT / PT		✓	✓
T Social Science Research Methods (Politics)	MSc	FT / PT		✓	✓
T Social Science Research Methods (Science and Technology Studies)	MSc	FT / PT		✓	✓
T Social Science Research Methods (Social Policy)	MSc	FT / PT		✓	✓
T Social Science Research Methods (Social Work)	MSc	FT / PT		✓	✓
T Social Science Research Methods (Social-Legal) (Law)	MSc	FT / PT		✓	✓
T Social Science Research Methods (Sociology)	MSc	FT / PT		✓	✓
T Social Work	MA	FT		✓	✓
T Sociology	MSc	FT		✓	✓
R Doctor of Education	EdD	PT			
R Doctor of Health Studies	DHS	PT			
R Doctor of Social and Public Policy	SPPD	PT			
R Doctor of Social Work	DSW	PT			
R Social Sciences	PhD	FT / PT			

Welsh

T Welsh and Celtic Studies ✕	MA	FT / PT		✓	✓
R Creative and Critical Writing (Welsh)	PhD	FT / PT			
R Language, Policy and Planning	PhD, MPhil	FT / PT			
R Welsh	PhD, MPhil	FT / PT			



Explore postgraduate subjects

T = Taught | R = Research | ✕ Conversion Course | FT = Full-time | PT = Part-time | DL = Distance Learning | BL = Blended Learning



Campus map

The academic buildings, libraries, Students' Union, most of the student residences and the city centre are within a short walking distance of each other

University Buildings

Architecture	6	Journalism, Media and Culture	13
Arts and Social Studies Library	26	Law and Politics	4
Biosciences	2	Main Building	1
Business	28, 29, 30	Mathematics	18
Cardiff University Brain Research Imaging Centre (CUBRIC)	33	Medicine	78, 83
Careers and Employability	11	Modern Languages	8
Centre for Student Life	11	Music and University Concert Hall	24, 25
Chaplaincy	10	Optometry and Vision Sciences	31
Chemistry	1	Pharmacy and Pharmaceutical Sciences	5
Computer Science and Informatics	18, 21, 29	Physics and Astronomy	21
Day Care Centre	16	Postgraduate Teaching Centre, Cardiff Business School	28
Dentistry	76	Psychology	3
Earth and Ocean Sciences	1	Security Centre	2
Engineering	21	Social Sciences	7
English, Communication and Philosophy	27	Sbarc I Spark	34
Fitness and Conditioning Centre	15	Student Support Services	11
Geography and Planning	7	Students' Union	14
Haydn Ellis Building	32	Talybont Sports Training Village	36
Healthcare Sciences	79	Translational Research Hub	35
History, Archaeology and Religion	27	Welsh	27



Directions

For door-to-door directions to Cardiff, go to: cardiff.ac.uk/visit/directions

Satnav Postcodes

Cathays Park Campus - Main Building: **CF10 3AT**
Heath Park Campus - **CF14 4XN**



Our campuses



What's next?

If you have questions about any aspect of applying or studying at Cardiff University, get in touch.

Meet us

There are many ways you can meet us to find out more about postgraduate study at Cardiff University.

Open Days

These events give you the chance to chat with academic staff, support services and current postgraduate students.

Postgrad café

Our drop-in postgrad café sessions allow you to spend time with our current students to ask them all of your questions, as well as finding out about funding opportunities from our Postgraduate Recruitment team.

Postgraduate campus tours

We offer campus tours specifically for prospective postgraduates. These one-hour tours, led by our student ambassadors, will introduce you to our Cathays Park Campus.

Postgraduate fairs

We attend a range of postgraduate fairs across the UK throughout the year.



See what's coming up

Chat to current students

Our team of UniBuddy student ambassadors are on hand to answer your questions about student life, a particular programme or what it's like to live and study in Cardiff.



Important information

The contents of this prospectus relate to the Entry 2024 admissions cycle and are correct at the time of going to press in August 2023. However, there is a lengthy period of time between printing this prospectus and applications being made to and processed by us, so please check our website - www.cardiff.ac.uk before making an application, in case there are any changes to the course you are interested in or to other facilities and services described here.

Where there is a difference between the contents of this prospectus and our website, the contents of the website take precedence and represent the basis on which we intend to deliver our services to you.

Any offer of a place to study at Cardiff University is subject to terms and conditions, which can be found on our website www.cardiff.ac.uk and which you are advised to read before making an application. The terms and conditions set out, for example, when we might make changes to your chosen course or to student regulations. It is, therefore, important you read them, and understand them.

If you are not able to access information online please contact us via telephone: 029 2087 9999

Your degree: Students admitted to Cardiff University study for a Cardiff University degree.

Edited by: Lauren Sourbutts-Hughes Postgraduate Recruitment team (UK), Cardiff University

Designed by: Barry Diamond and Neville Rhind

Printed by: A. McLay & Company Limited

This prospectus is printed on paper obtained from well managed sources using vegetable-based inks. Both the paper used in the production of this prospectus and the manufacturing processes are FSC® certified. The printers are also accredited to ISO14001, the internationally recognised environmental standard.

View the prospectus on our website: www.cardiff.ac.uk/study/postgraduate/prospectus

This prospectus can be made available in alternative formats, please contact: Publications Officer
Tel: +44 (0)29 2087 4455
Email: enquiry@cardiff.ac.uk

Mae'r ddogfen hon hefyd ar gael yn Gymraeg
This document is also available in Welsh



CARDIFF
UNIVERSITY

PRIFYSGOL
CAERDYDD

Open Days and events

Open Days and other visits provide the perfect opportunity for you to find out more about postgraduate study at Cardiff University.



Any questions?



@cardiffuni



facebook.com/cardiffuni



@cardiffuni



youtube.com/cardiffuni