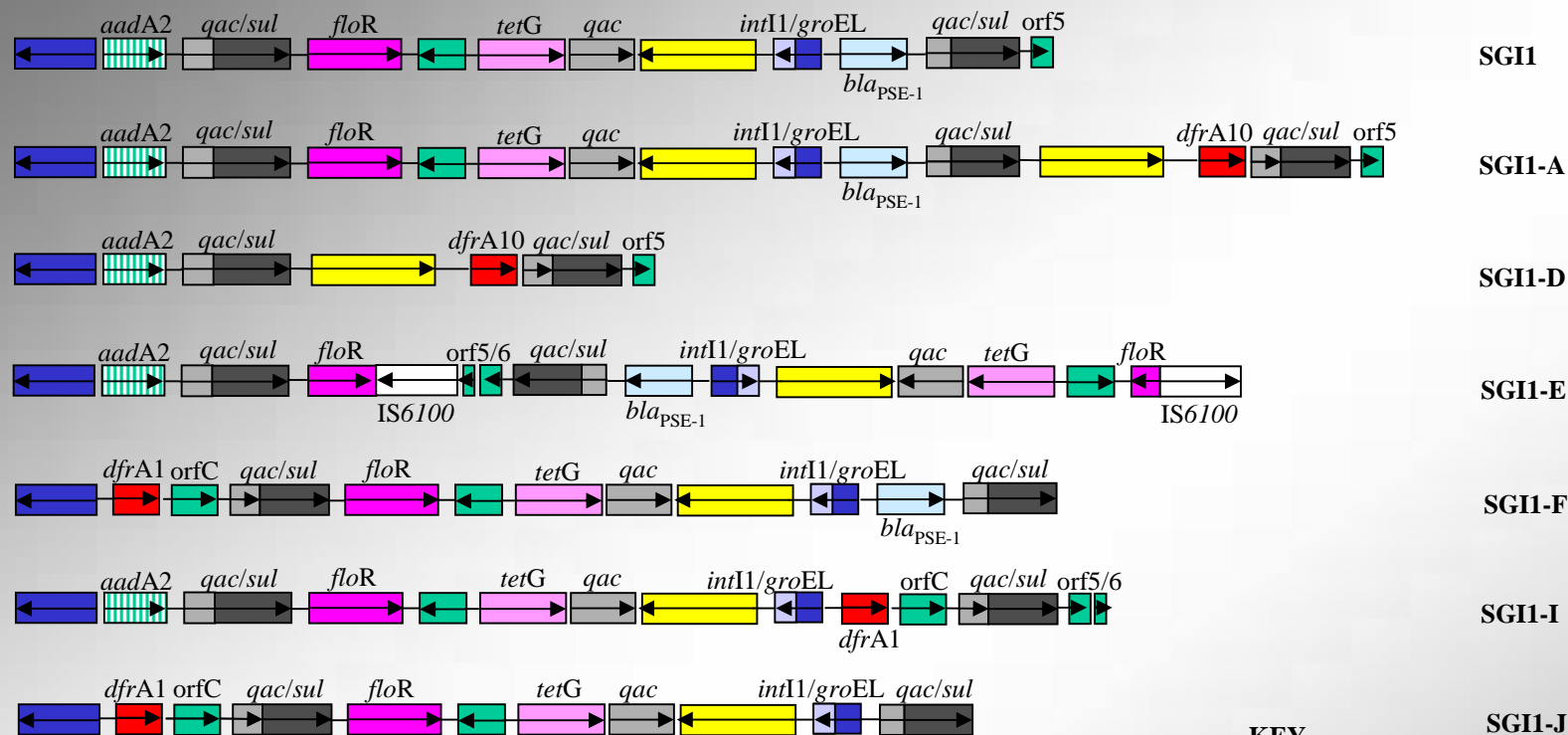
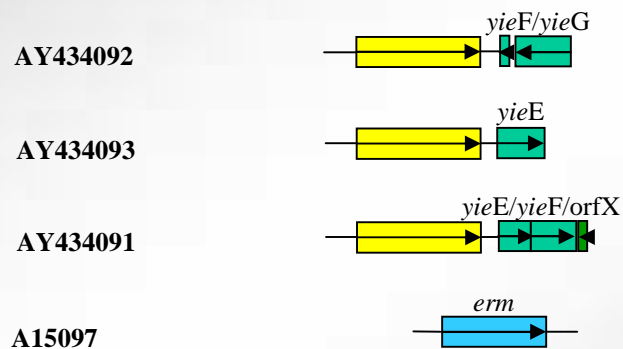
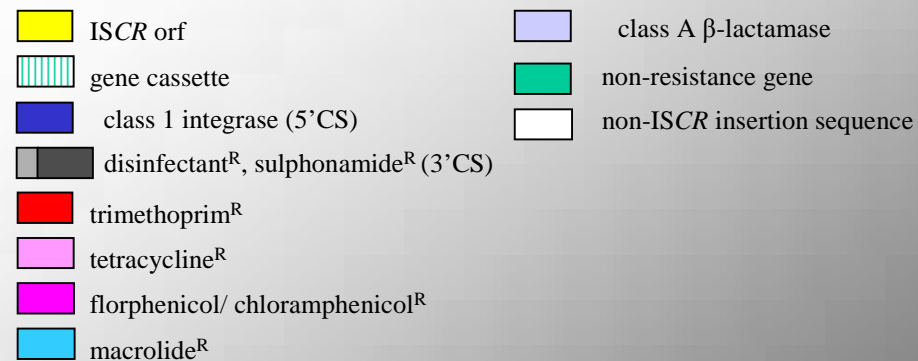


## Genetic context of ISCR3 elements.



### KEY



Genetic context of ISCR3 elements associated with Salmonella genomic island1 SGI1 and variants SGI1A, SGI1E, SGI1F, SGI1I and SGI1J and also ISCR3 associated with the erythromycin resistance gene *erm*. Together with the genetic context of ISCR1 elements also associated with the SGI1 variants SGI1A and SGI1D and the SGI1 deletions AY434091, AY434093 and A15097. The open boxes represent Open reading frames with the arrows indicating the direction of their transcription. ISCR1, ISCR3 elements are coloured in yellow.