

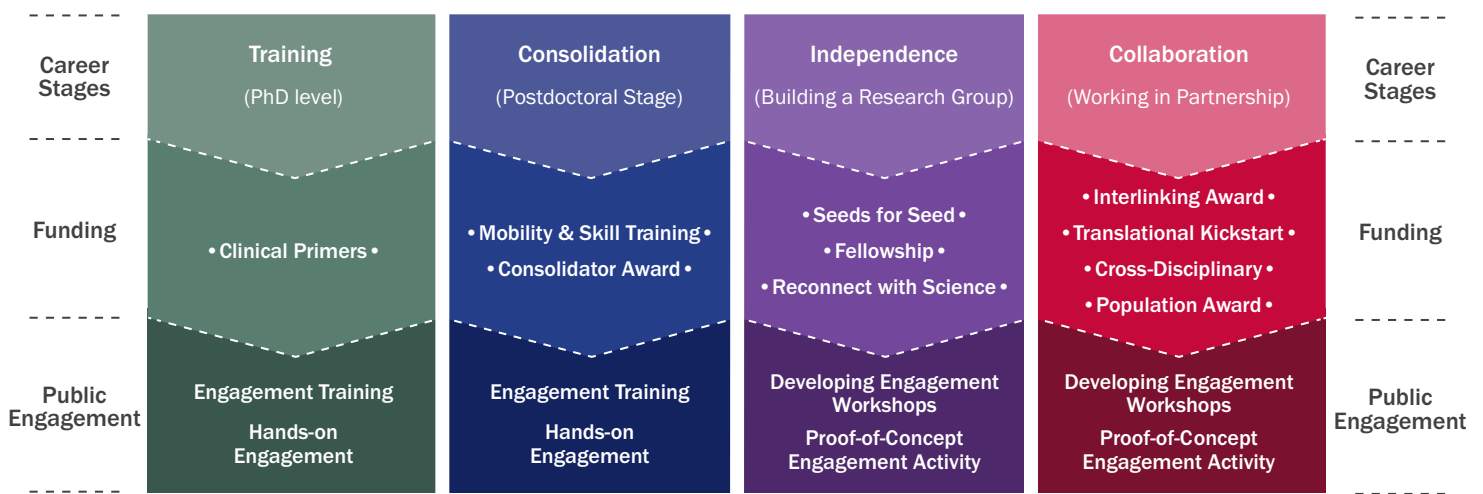
Wellcome Trust Institutional Strategic Support Fund

Public Engagement








Catalysing Research and Public Engagement via ISSF3

Cardiff University's £3.5M Wellcome Trust Institutional Strategic Support Fund (ISSF) is enabling new research and Public Engagement across the academic career pathway.



ISSF3 Public Engagement goals

- 
 Training will develop skills in those new to Public Engagement, in particular early career researchers
- 
 Proof-of-Concept funding will allow researchers to pilot the feasibility of their Public Engagement ideas
- 
 New monitoring and evaluation training and tools will help evidence Public Engagement outcomes and success
- 
 New in-house expertise in Public Engagement (our ISSF Public Engagement Officer) will support high-quality external grant submissions
- 
 A new College of Biomedical and Life Sciences (BLS) Public Engagement strategy and expert network will facilitate closer collaborative working across the College on Public Engagement initiatives.



What is Public Engagement?

“Public Engagement involves conversations about science and health research in unexpected places and surprising ways.”

Wellcome Trust

Our approach in ISSF3 will align with this definition, focusing on developing and delivering high quality, meaningful engagement with the public, including:

- Public conversations about science
- Public Engagement with research to produce social benefit
- Exchanging research ideas with members of the public to promote dialogue of mutual benefit
- Engaging the public in the design and conduct of research studies.

A critical focus will be two-way conversations bringing benefits to the public, the research, the researcher, the institution and wider society. This approach is consistent with Cardiff University’s focus on ensuring our research makes meaningful contributions to society, aligned to public involvement and identified needs.



Good Public Engagement has a range of benefits for the researcher, the public and the institution:

Researcher

- Fresh perspective
- Knowledge exchange
- Research and networking opportunities
- Build beneficial relationships
- Raised academic and research profile
- Increased likelihood of funding success.

Public

- Build mutual understanding and trust
- Contribute to social justice
- Flow of knowledge and learning between University and society
- Stimulate innovation and creativity

Institution

- Demonstrate accountability
- Strengthen and enrich the University’s identity
- Enrich research, teaching and learning
- Increase public support

Universities are increasingly being asked to demonstrate the impact of their research. Engagement is recognised as a pathway to impact which can lead to, or help strengthen, impact case studies. A new BLS College Public Engagement strategy and expert network will highlight our commitment to Public Engagement. The expert network will facilitate closer working across the College to promote collaboration and new opportunities. A suite of opportunities will be available for all researchers wishing to develop their Public Engagement skills.

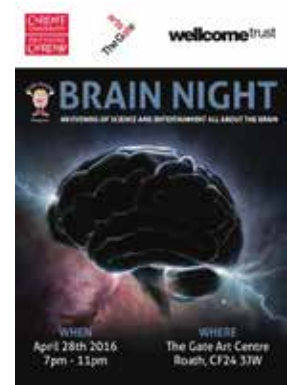
Previous ISSF2 Public Engagement projects

Public conversations about science

Brain night: Dr Gavin Perry, School of Psychology

'Brain Night', was an evening event in which the pre-existing Brain Games concept was reshaped for engagement with children to an adult audience.

"One importance benefit of being able to run this initial ISSF2 event is that we now have a more precise idea of requirements to expand the event, as well as how to get the best value for money from funding."



Benefits:

Researcher

- Raised academic and research profile
- Feedback obtained to shape the future delivery of activity

Public

- Increased awareness and knowledge of research at Cardiff University
- Stimulated creativity and innovation

Institution

- Increased public awareness/support for brain research
- Strengthened identity of the institution to build trust with the public

Public Engagement with research to produce social benefit

The art of science: Professor Awen Gallimore, School of Medicine

The project allowed school children to use their artistic vision to express their understanding of biomedical science. *"The exhibitions displayed pupils' art work and contextualised it with respect to cancer research, specifically cancer immunotherapy. The events showcased their excellent work and served as a platform for informing the public of research carried out within Infection and Immunity/Systems Immunity University Research Institute and the Wales Cancer Research Centre."* Professor Awen Gallimore



Benefits:

Researcher

- Art works developed relating to research for future Public Engagement activities
- Beneficial relationships built within School for future engagement activities

Public

- Increased awareness and knowledge of research at Cardiff University
- Stimulated creativity and innovation

Institution

- Increased public awareness/support
- Strengthened identity of the institution to build trust with the public

Previous ISSF2 Public Engagement projects

Exchanging research ideas with members of the public to promote dialogue of mutual benefit

SciSCREEN: Public Engagement through film and discussion. *Dr Amy Baldwin, School of Biosciences*



Events included current research from Cardiff University, featured film screenings followed by four or five short talks from a panel of local experts and finished with Q&A session. The security of funding for three events allowed the Cardiff sciSCREEN team to pursue an article to be published in the first issue of the new engagement journal 'Research for All', which was launched in January 2017.

Benefits:

Researcher

- Fresh perspective on subject from Q&A involving the public
- Raised academic profile

Public

- Flow of knowledge between the university and society
- Increased knowledge of the subject themes and awareness of Cardiff University

Institution

- Strengthened brand and identity
- Demonstrated accountability of research to the public

Engaging the public in the design and conduct of research studies

Development of a self-sustaining community of Huntington's disease (HD) walkers in Wales: *Dr Una Jones, School of Healthcare Sciences*



Research has shown that exercise leads to improvement in fitness and motor symptoms in people with HD. The project used this information to develop a self-sustaining community of walkers in Wales. A co-production approach was used to gather information and advice from people with HD to enable the team to develop expertise in facilitating physical activity. Since acquiring ISSF funding the project has now secured external funding from the Huntington's Disease Association to continue the project.

Benefits:

Researcher

- Research and networking opportunities
- Increased likelihood of funding success

Public

- Health and wellbeing
- Building trust and mutual understanding

Institution

- Enrich research, teaching and learning
- Increase public appreciation/support

Innovative approaches to supporting Public Engagement in ISSF3



How will we support your plans around Public Engagement?

- Training and support in Public Engagement techniques and developing evaluation and monitoring tools to support external applications
- Funding Proof-of-Concept applications and the provision of feedback to improve quality
- Advising on funding opportunities, how to craft and develop applications and supporting submission of external applications
- Building a community of engaged researchers across BLS able to support and help each other develop effective Public Engagement.

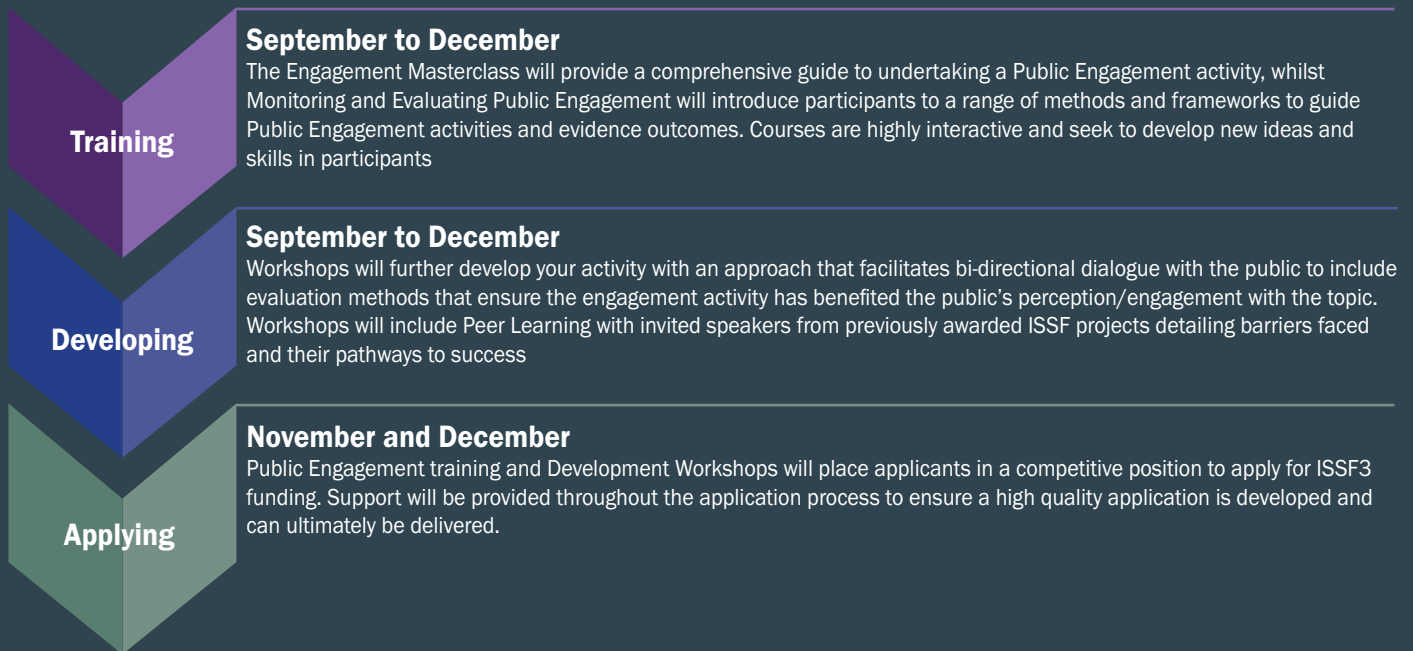


Training, activity development and applying for ISSF3

For ISSF3, we identified a range of challenges and areas for development. We will be focusing our attention on these key areas to boost quality and engagement, leading to future funding success.

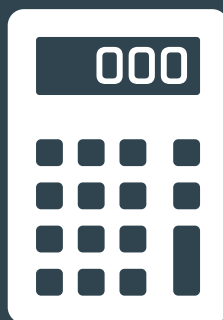


ISSF3 Public Engagement Funding Timeline



Small-scale Proof-of-Concept Public Engagement funding will be available for **new and innovative** Public Engagement up to:

£5K

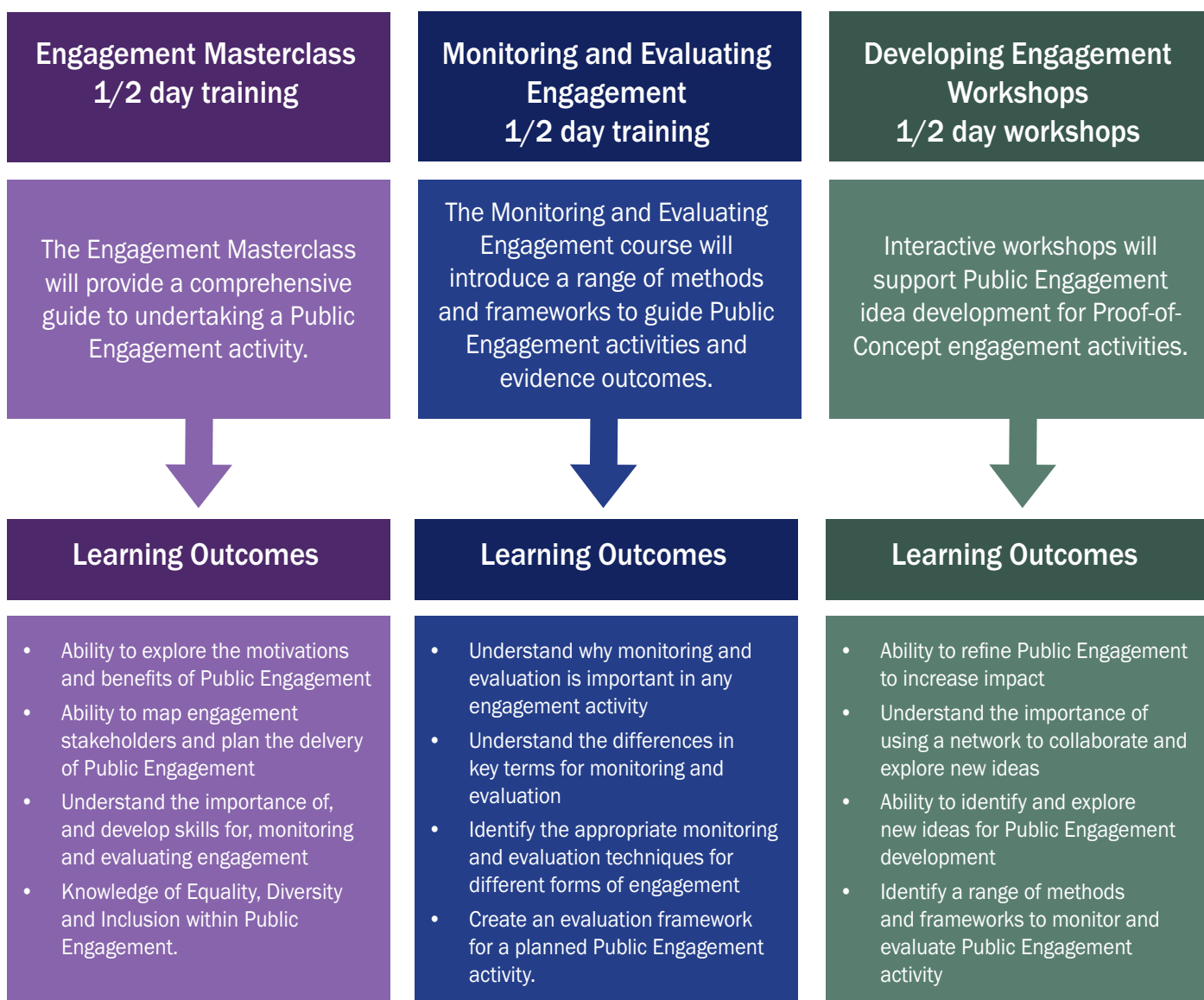


Justification of resources will need to be realistic. A detailed breakdown of the costs associated with your project will need to be provided. Applications must outline their costs in sufficient detail to be considered at the ISSF Panel.

Public Engagement training programme

Anyone applying for ISSF3 Proof-of-Concept Engagement funding should attend the tailored training provided by the College to increase their knowledge and review current best practice in Public Engagement. The training will be delivered by the ISSF College Engagement Officer.

Training will take place in various locations across the University and on different days to ensure easy access for applicants. Courses are highly interactive and seek to develop new ideas and skills in participants. There will be two half day training sessions available to applicants as well as our half day Developing Engagement Workshops.



Contact  ISSFPPE@cardiff.ac.uk to learn more



Public Engagement call:

The ISSF3 Proof-of-Concept Engagement funding call will be launched in September 2017.

Primarily, ISSF3 Proof-of-Concept Engagement funding is for anyone with a great idea for engaging the public in conversations about health-related science and research.

The panel will be looking to identify projects that:

- Develop the engagement skills and experience of researchers
- Are in-line with the descriptions and aims of Public Engagement as detailed in this newsletter
- Are Proof-of-Concept projects requiring funding up to a maximum of 5K
- Identify potential pathways to impact
- Act as a stepping stone to external follow-on funding to develop promising Public Engagement initiatives.

Application deadline:

The deadline for Proof-of-Concept Public Engagement funding applications will take place in **December 2017**.



Panel decisions

Panel decisions will be made in **January 2018**, with feedback provided to all applicants within a month of the panel meeting.

Successful applicants will be required to deliver their project in 2018 to allow time for delivery and project evaluation

- Whilst we explicitly promote collaboration, the Project Lead is required to be from the College of Biomedical and Life Sciences
- Projects already awarded funding which includes a Public Engagement element will not be considered
- The panel will be looking for new and innovative Public Engagement projects.

Help us assess ISSF3 Public Engagement

The ISSF3 Proof-of-Concept Public Engagement panel will assess and provide feedback on applications. Panel positions are advertised widely in the College, and junior and senior colleagues with relevant experience can apply. All panellists need to complete two HR approved training courses in equality & diversity.

Ideally, panellists will have:

- Grant assessment or research funding experience
- Public Engagement involvement or experience of assessing Public Engagement
- Experience of engaging the public or supporting Public Engagement
- Be willing to take part in the ISSF3 Public Engagement training.

Show your interest in being part of the ISSF Public Engagement panel by contacting:

ISSFPE@cardiff.ac.uk

Other Public Engagement developments

- We have appointed a dedicated ISSF3 College Engagement Officer who will work closely with the University Engagement Team and a new ISSF3 College Academic Engagement Lead to develop a cohesive College Engagement Strategy
- We will develop a network of trained and expert Public Engagement Ambassadors across Schools, Research Institutes and Centres
- We will use the National Coordinating Centre for Public Engagement's (NCCPE's) EDGE tool to benchmark perceptions of current support for Public Engagement to measure cultural change
- We will meet regularly with the South and South West ISSF teams to identify areas of development, collaborative opportunity and pathways to success
- The University's academic promotions process recognises innovation and engagement as one route to promotion. The Staff Celebrating Excellence Awards and the Innovation and Impact Awards also recognise and reward excellent engagement.

Public Engagement resources

The Cardiff University Engagement team has a wealth of information, opportunities and downloadable resources available on their intranet pages:

intranet.cardiff.ac.uk/staff/research-support/engagement

Find out more about the Wellcome Trust and the diverse Public Engagement work they fund:

www.wellcome.ac.uk

The National Coordinating Centre for Public Engagement has detailed information on best practice for individuals considering providing Public Engagement:

www.publicengagement.ac.uk





Carl Smith
ISSF College Engagement Officer

We welcome Carl into a new role as part of ISSF3. Carl can provide advice and guidance on all aspects of Public Engagement and the training and application process for Proof-of-Concept funding for ISSF3. Carl is part of the current cohort at the National Coordinating Centre for Public Engagement's (NCCPE's) Engage Academy and has regular contact with the South and South West ISSF teams to identify best practice and share experiences.



Dr Jeremy Segrott
ISSF College Academic Lead for Public Engagement

Jeremy will work closely with the College Engagement Officer to ensure the College ambition to unite researchers around synergistic engagement goals. He will encourage a dialogue-based approach to enhance the quality and value of the engagement experience for the public, as well as the researcher.



Dr Katherine Shelton
ISSF College Academic Lead for Equality & Diversity

Katherine is responsible for all aspects of Equality and Diversity in ISSF3. She reports to the University Equality and Diversity Committee, with ISSF3 initiatives informing new policies and approaches to management of internal funding calls at the University. Katherine reports to the University Equality and Diversity Committee, thereby informing the development of new policies around internal funding calls across the University.



Swapna Khandavalli
ISSF Administrator and Research Support Officer

Swapna is the ISSF Administrator and Research Support Officer in the College of Biomedical and Life Sciences. Swapna manages the day-to-day running of the ISSF scheme, including collation of applications, panel meetings and general enquiries relating to the scheme.



Professor Gary Baxter
Chair of the Wellcome Trust Management Board

Gary is the Chair of the Wellcome Trust Management Board, as well as Pro Vice-Chancellor in the College of Biomedical and Life Sciences. His role with the Wellcome Trust ISSF is overall responsibility and governance of the scheme.



Professor Kim Graham
ISSF Principal Investigator and Dean of Research and Innovation

Kim is the ISSF Principal Investigator and the Dean of Research and Innovation in the College of Biomedical and Life Sciences. Kim is responsible for the strategic and operational delivery of the ISSF schemes, and regular reporting of outcomes to the Wellcome Trust.



Dr Amanda Roberts-Jones
Acting Head of Research Development, Research Innovation Services

Amanda is based within Research and Innovation Services. She was the programme manager responsible for our previous ISSF awards, but now manages the professional team (based within Research and Innovation Services and the College) responsible for delivery of the ISSF awards.



Dr Andrew Staphnill
Research Development Officer

Andrew is based within Research and Innovation Services. He is responsible for managing appropriate use of the ISSF grant in alignment with the College match funding, and providing support in identifying opportunities for grant funding.

For Public Engagement enquiries:



ISSFPE@cardiff.ac.uk

For general enquiries:



ISSFadmin@cardiff.ac.uk