

**Progress indicators:**

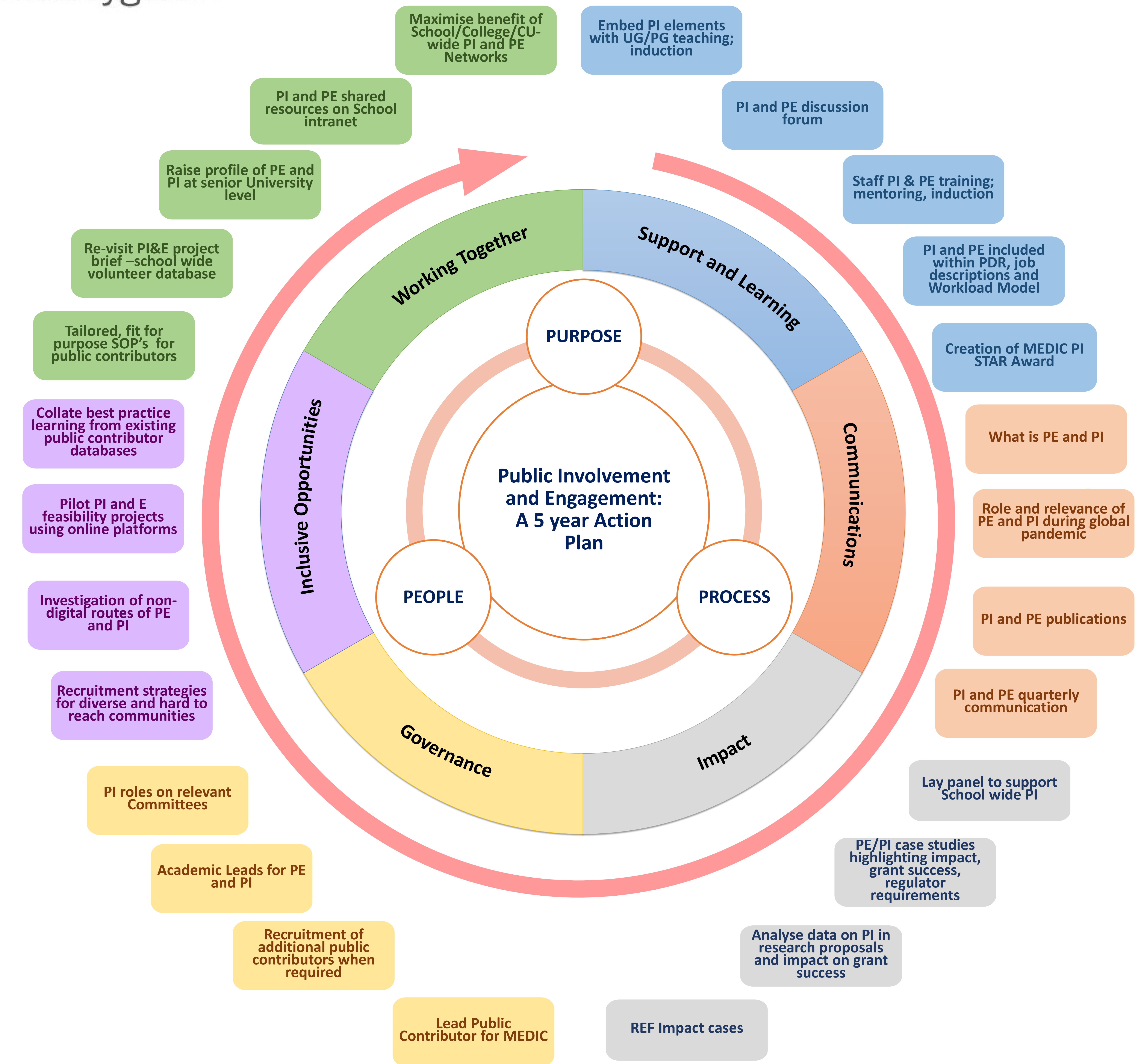
- Intranet pages featuring shared PPI and PE resources from across the School/College
- Senior recognition of the expertise and value of the Engagement (Involvement) Academic/Professional
- Senior commitment to support case for the development of PPI and PE on the University's core business (research and teaching)
- Updated PI&E project brief presented to School Executive
- Tailored expense forms and SOPs for public contributors.

**Progress indicators:**

- Best practice learning report of existing volunteer databases
- Delivery of two pilot projects to test feasibility of using online platforms to engage and involve an EDI public
- List of recommended tried and tested non-digital routes of engagement and involvement
- Case studies evidencing impact of PI and successful involvement of diverse and hard to reach groups

**Progress indicators:**

- Framework supporting applications from under-represented groups, for example, Black, Asian and Minority Ethnic and disabled candidates.
- Diverse PPI appointments to relevant governance committees



**Progress Indicators:**

- Additional PI in undergraduate and postgraduate teaching, including public appointments to sit on relevant committees.
- Increase in PI and E seminars taking place locally
- Increased (%) staff involvement in centrally coordinated Science in Health initiatives
- PI training and mentoring provision for staff
- PI and PE requirements to be included in relevant academic job descriptions and PDRs
- Recognition of PI and PE within workload model
- MEDIC STAR Award for PI activity
- Increased (%) use by of staff of Engagement tab (Research Profile)

**Progress indicators:**

- Revised School intranet content on PI and PE
- Published works on PI and PE activity
- Quarterly communication of PI and PE activity

**Progress indicators:**

- Staff access to public contributors willing to support research and teaching
- PE and PI case studies evidencing impact of PE and PI in grant success, impact and meeting regulatory requirements.
- Importance of PI in grant success paper
- PI and PE in REF Impact cases