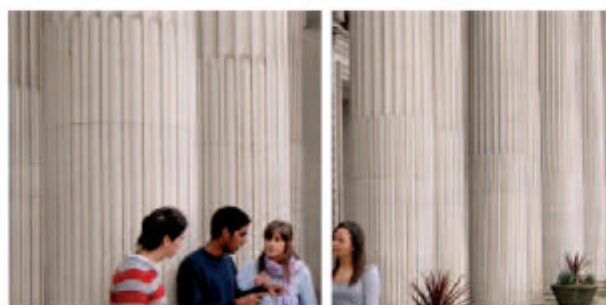


Cardiff School of Nursing & Midwifery Studies
Ysgol Astudiaethau Nyrsio a Bydwreigiaeth Caerdydd



Guide for Applicants

For Pre-registration Undergraduate Nursing and Midwifery Programmes



Bachelor of Nursing (Hons):

Adult Nursing, Children's Nursing and Mental Health Nursing

Bachelor of Midwifery (Hons)

www.cardiff.ac.uk/nursing



Contents

Section 1	Programme Information	3
Section 2	Decisions to be made prior to application	4
Section 3	Entry requirements	5
Section 4	How to apply	7
Section 5	Selection Process Adult, Mental Health and Children's Nursing Midwifery	8
Section 6	Offers	11
Section 7	Funding	12
Section 8	Enrolment (i) Health Requirements (ii) Criminal Records Bureau (CRB) Disclosure	13
Section 9	Residences	15
Section 10	Programme Requirements. Theory, clinical, working hours, annual leave, part time employment, uniform policy	16

In places it will suggest other areas where you can access further information.
This information will be indicated by the following symbol ➡

Introduction

Cardiff School of Nursing and Midwifery Studies welcome students ready for the challenges of modern health care. We are a dynamic, innovative and forward looking School with recognised excellence in learning, teaching and research. We seek to create a world-class environment for studying nursing and midwifery and as an academic institution we are committed to the development of nursing and midwifery knowledge which directly improves health outcomes and health care for patients.

Our well organised and highly rated pre-registration programmes will provide you with the theory and practical experience you require to register with the Nursing and Midwifery Council – this is the gateway to a satisfying, rewarding and absorbing career as a registered nurse or midwife. Throughout the course you will be supported by enthusiastic and committed lecturers, clinicians and experienced nursing and midwifery researchers. We aim to teach and support students in a research rich culture. We work in close collaboration with our local Health Boards and with the private sector; here, experienced clinical mentors and service users will guide you as you develop new skills in nursing and midwifery practice.

The School values the involvement of patients and the public to enhance the quality of our research and education programmes. To assist us with Public and Patient Involvement (PPI), the PPI Project Manager is available to offer advice, guidance and support.

Cardiff University is committed to promoting equality and diversity in all of its practices and activities, including those relating to student recruitment, selection and admission.

The University aims to establish an inclusive culture which welcomes and ensures equality of opportunity for applicants of all ages, ethnicities, disabilities, family structures, genders, nationalities, sexual orientations, race, religious or other beliefs, and socio-economic backgrounds. This commitment forms part of the Equality and Diversity Policy which is available at www.cardiff.ac.uk/cocom/equalityanddiversity/index.html

For many people applying to a university can be a complex procedure. This guide is intended to help you through the process of applying to the Cardiff School of Nursing and Midwifery Studies pre-registration programmes.

I wish you every success in your application and in your studies.

Professor Sheila Hunt
Dean and Head of School / Deputy Pro VC Staff and Diversity



Section 1:

Programme Information

The School offers pre-registration programmes of study in preparation for the award of a Bachelor of Nursing (Honours) and a Bachelor of Midwifery (Honours). Both these programmes allow eligibility to register with the Nursing and Midwifery Council (NMC).

The Bachelor of Nursing (Honours) Programme offers the opportunity to study either Adult Nursing; Mental Health Nursing or Children's Nursing. The titles and associated UCAS Codes are as follows:

BN Honours September Intake

Nursing (Adult)

UCAS Code: B740 BN/Ad

Nursing (Children's Nursing)

UCAS Code: B730 BN/Ch

Nursing (Mental Health Nursing)

UCAS Code: B760 BN/MH

BN Honours Feb/March Intake

Nursing (Adult)

UCAS Code: B741 BN/Ad

Nursing (Children's Nursing)

UCAS Code: B731 BN/Ch

Nursing (Mental Health Nursing)

UCAS Code: B761 BN/MH

BMid Honours September Intake only

Midwifery

UCAS Code: B720 BMid

Full details of all of these programmes are outlined on our website ➔

www.cardiff.ac.uk/nursing and also in the Cardiff School of Nursing and Midwifery

Studies Pre-registration Undergraduate Brochure. More information is also available in the Cardiff University Undergraduate Prospectus.

We recommend that you study this information carefully to ensure that you are fully aware of what each of the programmes entail prior to applying. You may also wish to attend one of the School's Information Days to find out more.

➔ www.cardiff.ac.uk/sonms/newsandevent/s/events/undergraduate-information-days

Copies of the Pre-registration Undergraduate Brochure and the Cardiff University Prospectus as well as details of the School of Nursing and Midwifery Studies Information Days are available by contacting the School:

School Information Desk
Cardiff School of Nursing and Midwifery Studies
Cardiff University
Ty Dewi Sant
Heath Park Campus
Cardiff CF14 4XN
Tel: 029 2068 7766
Email: nurseinfo@cf.ac.uk
www.cardiff.ac.uk/nursing

The Nursing and Midwifery Council's (NMC) website:

➔ www.nmc-uk.org

Section 2:

Decisions to be made prior to application

Applicants need to select carefully the programme for which they wish to apply. Applications for more than one field/programme will not be considered.

There are two intakes per annum for the undergraduate Bachelor of Nursing programmes (BN) which commence in September and February/March. Applicants must select the correct UCAS code for their preferred intake date. The School does accept deferred entry applications for the Bachelor of Nursing programmes.

There is one intake per annum for the Bachelor of Midwifery programme (BMid) which commences in September. The School is unable to accept deferred entry applications for this programme.

The School is committed to creating an inclusive learning environment and welcomes applications from disabled people. Members of staff work closely with the Disability and Dyslexia Service to ensure that disabled students have access to the School's educational opportunities.

Disability and Dyslexia Service (DDS)

The Disability and Dyslexia Service (DDS) at Cardiff provides confidential advice and support for students who are disabled or who have a specific learning difficulty (dyslexia), mental health difficulty or long term medical condition. Our services are aimed at both prospective students and those students who are already enrolled at Cardiff.

Services are available at both the Cathays Park and Heath Park campuses – contact details are listed below. Any member of our team would be happy to deal with your initial enquiry by email: dyslexia@cf.ac.uk or disability@cf.ac.uk
If you have a question for our mental health adviser you can email: mhconfidential@cf.ac.uk

Cathays Park Campus: Disability & Dyslexia Service
Student Support Centre
50 Park Place
Cardiff CF10 3AT
Tel: 029 2087 4844

Heath Park Campus: Disability & Dyslexia Service
The Student Support Centre
2nd Floor, Cardigan House
Heath Park
Cardiff CF14 4XN
Tel: 029 2074 3811

If you have any questions or concerns about applications to a programme offered by the School, please do not hesitate to contact:

School Information Desk
School of Nursing and Midwifery Studies
Cardiff University
Ty Dewi Sant
Heath Park Campus
Cardiff CF14 4XN
Tel: 029 2068 7766
Email: nurseinfo@cf.ac.uk
www.cardiff.ac.uk/nursing

Fitness to Practise

The Nursing and Midwifery Council (NMC) aims to protect the public by setting professional standards which ensure that registered nurses and midwives are 'fit to practise'. These standards require new students to provide the University with evidence that they are of good health and good character. Part of the Cardiff School of Nursing and Midwifery Studies selection procedure involves assessing an applicant's fitness to practise, and there are more details in Section 8 of this guide. **The health assessment is independent of the selection process and takes place after an offer has been made.**

Other useful sources of information regarding fitness to practise can be found at ➡:
The Nursing and Midwifery Council's website: www.nmc-uk.org

Section 3:

Entry Requirements

Applicants whose post 16 entry requirements are over 3 years old will be required to provide evidence of recent study at an appropriate level.

Bachelor of Nursing: Adult, Mental Health, Children's Nursing and Midwifery

A-Level: A typical profile being BBB. General Studies and Essential Key Skills will not be included. Specific subjects are not required.

Welsh Baccalaureate: To include a pass in the core subjects and two A-level passes at grade B or above.

BTEC: The National Diploma in Health Studies should be passed with a minimum of DDM as the final award. The BTEC in Early Years should be passed with DDD as the final award. Other relevant BTEC National Diplomas may be considered.

Access Course: Students must offer a credit based nursing or health based Diploma level course validated by The Open College Network. This should be passed with a minimum of 6 distinctions, 33 merits and 6 passes. Access courses are stand alone programmes, therefore applicants are not required to meet the GCSE requirements. The School does not accept distance learning access programmes.

OU K101

This should be passed with the award of 60 level 1 credits. In addition students must meet the Maths, English Language and Science GCSE requirements.

Transfers

The School is happy to consider transfer requests. Initial enquiries should be directed to:

Selection and Admissions Team

Email: sonmsadmissions@cf.ac.uk

Tel: 029 2068 7538

Essential entry requirements

Applicants will be expected to have a minimum of 5 GCSEs including English Language, Maths and a Physical Science at grade C or above. In certain circumstances Essential Key Skills at Level 3 in Communication and Application of Number may be accepted in lieu of English/Welsh and Mathematics.

If you are unsure that your qualifications meet the entry requirements please contact:

Selection and Admissions Team

Email: sonmsadmissions@cf.ac.uk

Tel: 029 2068 7538

For full details of entry requirements visit:

➔ www.cardiff.ac.uk/sonms/degreeprogrammes/undergraduate

Section 4:

Applying for Bachelor of Nursing and Bachelor of Midwifery programmes

(i) UCAS

Applicants must already meet or be working towards the pre-requisite entry qualifications.

Applications should be made via Universities and Colleges Admissions Service (UCAS) www.ucas.com

Applications are made on-line via the UCAS website using the "UCAS apply" facility. To use this facility you need to access www.ucas.com/apply. The UCAS website will provide you with information on how to apply and will explain the procedure for application.

Please Note: Deadline for applications for programmes commencing 2012/13 is 15th January 2012.

Please note that the School can no longer accept Direct Applications and all applications for Bachelor of Nursing and Bachelor of Midwifery have to be made via UCAS.

Section 5:

The Selection Process

The School has a 3 staged selection process:

- Shortlisting
- Assessment
- Interviews

All applications received at UCAS by the main cycle closing date, which is 15 January 2012, will receive equal consideration.

The chart below illustrates a typical UCAS cycle application profile. These numbers change between cycles due to changes in the number of funded places available and the number of applications received.

Programme	Number of Applicants	Number of Applicants Interviewed	Number of Places (Sept)	Number of Places (March)
Adult	2020	700	110	55
Mental Health	250	100	30	15
Child	600	120	22	15
Midwifery	750	90	35	n/a

Adult, Mental Health and Children's Nursing

(i) Shortlisting

All applications are reviewed to ensure that candidates either possess or are working towards qualifications which meet the schools minimum entry criteria. If so the application will progress to the next stage. Applicants who do not progress to the next stage will not be invited for the Assessment Day and will be informed by UCAS that their application has been unsuccessful.

Unsuccessful applicants who wish to obtain feedback should contact:

☞ admissions@cf.ac.uk

(ii) Assessment

Candidates will be invited for assessment. The invitation via email will include:

- Information regarding the time and location of assessments.
- Information regarding the nature and process of the assessments.

Applicants who are invited to assessments and have disabilities or additional support needs are encouraged to indicate this on their confirmation email. We will contact you to discuss your access requirements so that appropriate adjustments can be arranged. These might include, for instance, adjustments to the format of the numeracy and literacy assessments.

Applicants who are unable to attend an assessment on the date offered should contact the School's Selection and Admissions Team.

Assessments are held between October and March each year over a morning or afternoon session.

Due to the large number of applicants invited, it is not possible to allocate specific times.

The numeracy assessment is designed to test your numerical competence.

Calculators are not permitted.

It will cover:

- Addition
- Subtraction
- Multiplication
- Expressing fractions as decimals
- Weight, volume and measures

This will be under examination conditions with a 45 minute time limit.

For the literacy assessment you will be asked to write a 250-500 word essay about a relevant topic which will be given to you on the day. This will be under examination conditions with a 45 minute time limit. The aim of this assessment is to assess your writing skills. The emphasis is on the mechanics of writing rather than content. The majority of the marks are awarded for style, structure, grammar, punctuation and spelling.

If successful in both tests you will be invited for an interview. Unsuccessful applicants who wish to obtain feedback should contact:

➔ admissions@cf.ac.uk

(iii) Interviews

Interviews are normally held at Heath Park Campus, University Hospital of Wales for Adult Nursing and Eastgate House, Newport Road for Mental Health and Children's Nursing. Applicants are encouraged to discuss individual needs with the Selection and Admissions Team in order for any reasonable adjustment to be made as necessary during the selection process.

At this stage of the process your personal statement will be reviewed and scored using the following criteria: -

- Motivation
- Communication skills
- Insight into the nature and demands of the programme
- Insight into chosen area of practise
- Insight into the emotional demands of care and caring when responding to patient/client needs
- Transferable skills and attributes

The School is aware of websites which assist applicants in preparing personal statements and would like to emphasise that it is important for the statement to be a genuinely personal one, particularly since material from the applicant's personal statement is likely to be discussed further during the interview.

The interviews are of 15-20 minutes duration. There will normally be two interviewers who are aligned to the specific programme for which you have applied.

You will have the opportunity to ask questions during your interview. This may be to clarify any points or to seek information regarding the programme, university life or clinical placements.

The interview will be scored using the selection criteria described below

Selection Criteria

- Motivation
- Caring

- Communication skills
- Insight into the nature and demands of the programme
- Insight into chosen area of practise
- Insight into the emotional demands of care and caring when responding to patient/client needs
- Transferable skills and attributes

Following the Assessment and Interview stage each applicant is awarded a total application score. This is the sum of their assessment and interview score.

Offers are made using the total application score (i.e. personal statement, assessment and interview scores). In addition offers will only be made to applicants who have provided a satisfactory statement of character.

Applicants will be notified of the outcome of their selection process via UCAS tracker. Unsuccessful applicants who wish to obtain feedback should contact:

➔ admissions@cf.ac.uk

Midwifery

(i) Shortlisting

All applications are scored using the following sources of information:

- Application form
- Personal statement
- Reference

Shortlisting Criteria

- Academic potential
- Motivation
- Communication skills
- Insight into the nature and demands of the programme
- Insight into chosen area of practise
- Insight into the emotional demands of care and caring when responding to patient/client needs
- Transferable skills and attributes

Each criterion is equally weighted enabling applications to be awarded a shortlisting score.

The School is aware of websites which assist applicants in preparing personal

statements and would like to emphasise that it is important for the statement to be a genuinely personal one, particularly since material from the applicant's personal statement is likely to be discussed further during the selection day.

A threshold score is calculated for each UCAS cycle. This will differ between cycles depending on the number and quality of applications received.

Unsuccessful applicants will be notified via UCAS. Feedback is available via:
✉ admissions@cf.ac.uk

All applicants who reach the threshold score will be invited via email to a Selection Day.

The invitation will include:

- Information regarding the time and location of the Selection Day.
- Information regarding what the applicant is required to bring to the Selection Day.
- Information regarding the nature and process of the Selection Day.

Applicants who are invited to the Selection Day and have disabilities or additional support needs are encouraged to indicate this in their reply. We will contact you to discuss your access requirements so that appropriate adjustments can be arranged. These might include, for instance, adjustments to the format of the numeracy and literacy assessments.

Applicants who are unable to attend a Selection Day on the date offered should contact the School's Selection and Admissions Team. It may be possible for an alternative date to be offered.

Applicants who do not reach the threshold score will not be invited for the Selection Day and will be informed by UCAS that their application has been unsuccessful.

(ii) Selection Day

All applicants who have been successfully shortlisted will be required to attend a Selection Day and will be notified by the School's Selection and Admissions Team.

Selection Days are normally held at Eastgate House, Newport Road, Cardiff between January and March.

Due to the large number of applicants invited, it is not possible to allocate specific times.

The sessions follow the following format:

- Registration and checking of documentation
- 30 minute introduction and information session
- Literacy and numeracy assessment
- Individual interviews

The numeracy assessment is designed to test your numerical competence.

Calculators are not permitted for the assessment.

It will cover:

- Addition
- Subtraction
- Multiplication
- Expressing fractions as decimals
- Weight, volume and measures

This will be under examination conditions with a 45 minute time limit.

For the literacy assessment you will be asked to write a 250-500 word essay about a relevant topic which will be given to you on the day. This will be under examination conditions with a 45 minute time limit. The aim of this assessment is to assess your writing skills. The emphasis is on the mechanics of writing rather than content. The majority of the marks are awarded for style, structure, grammar, punctuation and spelling.

The interviews are of 15-20 minutes duration. There will be a minimum of two and maximum of three interviewers who relate to the specific programme you have applied for. Applicants are encouraged to discuss individual need with the Selection and Admissions Team in order for any reasonable adjustment to be made as necessary during the selection process.

Selection Criteria

Each applicant is scored using the following criteria:

- Literacy and numeracy assessment results
- Motivation
- Communication skills
- Insight into the nature and demands of the programme
- Insight into chosen area of practise

- Insight into the emotional demands of care and caring when responding to patient/client needs
- Transferable skills and attributes

For Midwifery applicant offers are made based on the Selection Day score only. Where more than the required numbers of applicants score equally, a combined score of their application and interview will be calculated.

Offers will only be made to candidates who have provided a satisfactory statement of character.

Applicants will be notified of the outcome of their Selection Day via UCAS.

Feedback is available via:

✉ admissions@cf.ac.uk

Section 6:

Offers

i) UCAS Applicants

Offers will be made via the UCAS system in line with the UCAS recommendation that all main cycle applicants should have received a decision by 31st March.

Applicants are only required to respond once all decisions have been received. UCAS will specify the date by which a response will be required.

All Nursing and Midwifery programmes in Wales have a limited allocation of funded places. Therefore, the availability of a funded place will be a condition of the offer.

Applicants who select Cardiff University as their first choice will be given priority for the allocation of a funded place.

Confirmation of offers via UCAS will take place after **all** applicants' academic results are received by the School and funded places have been allocated. Please be aware, your offer does not become unconditional until this point. This is normally the third/fourth week of August.

The commencement date for nursing and midwifery programmes will be stated in the offer letter.

Nursing applicants may be offered a place for a Spring intake if the funded places for September have been filled.

Unless applicants already meet the pre-requisite entry requirements, there will be an academic condition attached to the offer.

If you have declared a disability the University's Disability and Dyslexia Service will contact you after an offer has been made and will be available to assist you with any adjustments or additional support that you may need in order to pursue your chosen programme of study.

Disabled students may be eligible for the Disabled Students' Allowance, which covers additional study-related costs arising from a disability. **Please contact the Disability and Dyslexia Service as early as possible to discuss your application so that support can be put in place promptly.**

The Disability and Dyslexia Team at Cardiff can be contacted on ☎
dyslexia@cf.ac.uk or disability@cf.ac.uk

Cathays Park Campus: Disability & Dyslexia Service
Student Support Centre
50 Park Place
Cardiff CF10 3AT
Tel: 029 2087 4844

Heath Park Campus: Disability & Dyslexia Service
Student Support Centre
2nd Floor, Cardigan House
Heath Park
Cardiff CF14 4XN
Tel: 029 2074 3811

Section 7:

Funding

Please note that NEW financial information regarding fees, bursaries and loans with effect from September 2012 is available. Tuition fees for the programme are met by the Welsh Government. A specific number of funded places are allocated to each Welsh institution annually. The School is not able to recruit additional students on a self funded basis other than pre arranged contractual agreements.

In the event of an excess of successful applicants, funded places will be allocated to those applicants who:

- meet the academic conditions of their offer
- achieved the highest total score
- have selected Cardiff University as their first choice.

This process will be completed shortly after results are available to the School and before confirmation decisions are made. This is normally the last week of August.

Further information regarding funding arrangements is available at
➔ www.nliah.wales.nhs.uk

Section 8:

Enrolment

Following confirmation of offers enrolment/continuation on the programme will be conditional upon a satisfactory health screening and Enhanced Criminal Records Bureau (CRB) Disclosure.

Good Health and Character

All applicants must meet the Nursing and Midwifery Council's (NMC) requirements in relation to good health and good character. Health and character requirements are conditions of enrolment. Therefore they are independent of the selection process and do not influence selection decisions.

Advice regarding all these processes will be provided by the School's Selection and Admissions Department during the application process.

All applicants are treated on an individual basis and any information disclosed will be treated in confidence.

(i) Health Requirements

All applicants who accept an offer are required to complete a health questionnaire prior to enrolment. The information submitted is assessed independently by the Occupational Health Department, and there are three possible outcomes:

- You meet the health requirements and are accepted onto the course.
- The health questionnaire highlights a few issues and the Occupational Health Adviser contacts you to discuss them. Reasonable adjustments which would enable you to complete the course might also be discussed at this stage.
- You may be invited to have a more in-depth occupational health assessment, possibly involving a medical examination, to determine whether you are fit to practise.

All students must complete this process before starting the course.

NB: Midwifery Students must have a validated negative sample for Hepatitis B and Hepatitis C. This is arranged by the Occupational Health Department following commencement of the programme.

For further information ➡:
www.nmc-uk.org

(ii) Character Requirements

This will be achieved by providing a complete and accurate Enhanced CRB disclosure. These costs will be met by the applicant. Applicants will also be required to provide a 'Statement of Character' in addition to their UCAS reference.

When considering good character the University considers criminal convictions, (including cautions, reprimands, bind over's, police warnings, or ongoing investigations). The programme is exempt from the Rehabilitation of Offenders Act and as such the Enhanced CRB will disclose this information including spent convictions so you must disclose. If you are currently being investigated by the police, other official body or employer you should disclose this information.

Applicants are required to disclose any relevant information to the School's Nursing and Midwifery Council Fitness to Practice Panel as early as possible during the application process. If you are in any doubt as to whether you have an issue relevant to the good character requirement you are advised to discuss the issue in confidence with the Senior Admissions Tutor rather than any other third party.

Contact details are as follows:
Jerry Bray (Tel: 02920 687539 email Bray@cardiff.ac.uk) or
Mandy Brimble (Tel:02920687543 email Brimblemj@cf.ac.uk).

Failure to disclose any issue that becomes apparent once the Enhanced CRB is received by the University may result in withdrawal of the offer or withdrawal from the programme.

All information received by the University is treated confidentially. The use and storage of this information complies with the Data Protection Act (1998). Disclosure does not influence selection decisions as they are made independently to the good health and character processes.

For further information ➡:
www.disclosurecrb.co.uk/index.php
www.isa-gov.org.uk

Section 9:

Residences

Cardiff University has always attached great importance to the provision of high-quality accommodation and has invested heavily in recent years to provide some of the best student residences in the British University sector. All undergraduates who apply during the normal UCAS admissions cycle, i.e. come to Cardiff as a firm or insurance applicant are guaranteed a single occupancy place in University residences during their first year of study.

Several new residences have been built in recent years and many of the older ones have been refurbished to a high standard.

70% of study bedrooms have their own en-suite shower and toilet facilities and all study bedrooms in Halls of Residences (except student houses/flats) have University computer network connection points. Accepting an offer on a firm basis and completing the online residences application form promptly increases the chances of your accommodation preferences being met.

Full details of all University-owned accommodation are provided in the University's Residences Brochure.

Besides managing University property, the Residences Office also offers help to students seeking private sector accommodation by maintaining regularly updated lists of shared houses and flats which are available for rent.

For further details please contact the:
Campus Services Division
PO Box 533
Southgate House
Bevan Place
Cardiff CF10 3TE
Tel: 029 2087 4849
Fax: 029 2087 4661

Email: residences@cardiff.ac.uk
www.cardiff.ac.uk/residences

Section 10:

Programme Requirements

All Nursing and Midwifery programmes are full time degrees. Attendance at both theory and practice sessions is compulsory in order to meet the NMC requirements for registration.

Theory

The theory component of the programmes is delivered at the following sites:

- Heath Park Campus
- EastGate House Campus
- Other venues in the main University's Cathays Park Campus. A range of teaching methods are utilised based on the philosophy of inquisitiveness and enquiry, and will include, lectures, tutorials, seminars, role play and simulation. There will also be opportunity for shared learning across other programmes for nurses, midwives and health care professionals.

Theory hours are normally from 09.00 hours until 16.30 hours.

Clinical Placements

The School has a Clinical Placements Policy which will enable you to experience the full 24 hour cycle of care over a seven day period. Clinical placements cover a geographical area within South East Wales and you will be expected to travel to any part of the circuit during the three year programme.

In line with Nursing and Midwifery Council guidelines student nurses are required to undertake 4,600 hours of study; 2,300 hours of theory and 2,300 hours of practice.

For student midwives, the programme must include 45 weeks of planned educational activity.

Hours of Work

A minimum of 37.5 hours per week (excluding meal breaks) incorporating a variety of shifts is required. A maximum shift length of twelve and a half hours may be worked but you must not exceed the

EU working time directive of 48 hours per week.

Uniform policy

When on clinical placements students are required to adhere to the All Wales Uniform Policy. An 'All Wales' uniform is provided by the University.

Operational Principles

A programme plan indicating theoretical and placement weeks, is provided at the commencement of your programme for each cohort of students. Annual leave is **fixed** within this plan and you should take this into account when planning holidays and family engagements. You will be provided with the proposed placements for each year at the beginning of the academic year.

Part Time Employment

The School recognises that many students may seek part time employment. The nature of this employment must be flexible. Contracts that require fixed hours or days must not be entered into, due to possible conflict with hours of attendance during clinical placements.

Diagrammatic representation of the Midwifery programme is shown overleaf.

Further Information

More detailed information regarding the University, the School or the programmes can be found via the Cardiff University prospectus and web site; and the Cardiff School of Nursing and Midwifery Studies brochure and School web site.

If you have any questions that are not fully answered please contact:

School Information Desk
Cardiff School of Nursing and Midwifery
Studies
Cardiff University
Ty Dewi Sant
Heath Park Campus
Cardiff CF14 4XN
Tel: 029 2068 7766
Email: nurseinfo@cf.ac.uk
www.cardiff.ac.uk/nursing

Important Information. Please read carefully.

The University offers the information contained in this Applicants Guide as a guide only. It does not constitute a contract and is not binding on prospective students, current students or the University. While the University makes every effort to check the accuracy of the factual content at the time of publication, some changes will inevitably occur in the interval between publication and the academic year to which the Applicants Guide relates. For example, courses, entry requirements and typical offers may have changed in-line with market and student demand, and research development. Applicants should not therefore rely solely on this Guide and should visit the University website www.cardiff.ac.uk/nursing or contact the School Information Desk Tel: 029 2068 7766 for up-to-date information concerning course content, accreditation, and entry requirements for the relevant academic year when considering applying to the University .

Updated 11.01.2012

