

Attaching an Apple Macintosh to the Network

If you are attaching an Apple Macintosh to the University's network for the first time, you will need to follow these steps:

1. Complete and return a **Permission to Connect** form. This is required for IP services, e.g. Internet access and/or email.
2. Configure Mac for the University network via the Mac's TCP/IP control panel.

These are covered in this document

Network Requirements

Supported Hardware

The minimum recommended specification for a Macintosh is Mac mini or eMac G4/1.42GHz, iMac G5/1.8GHz or PowerMac G5/2GHz all with 1GB RAM. Macs with Intel processors are fully supported.

Cables and Additional Hardware

Information Services Computing Centre (at 39-41 Park Place) stocks cables (drop leads) to connect your Mac to the Ethernet socket on the wall.

For those users in offices with older network sockets (thin Ethernet), transceivers (adapters) are also available for connecting newer Macs (with RJ-45 connectors) to the network.

System Requirements

The recommended minimum operating system to connect to the University's network is Mac OS X 10.3.9. Mac OS 9 systems are no longer supported.

Permission to Connect form

Before connecting your Macintosh to the network you must complete and return a **Permission to Connect** form to the Computing Centre, 39-41 Park Place. A unique Cardiff University IP address (Internet Protocol) will then be assigned to your Ethernet card address, which allows your computer to access the Internet and run IP applications (web browser, email). The registration database is then updated overnight.

Note: Should the Ethernet card be replaced at a later date, i.e. owing to a fault, you will need to complete a new Permission to Connect form available from the Computing Centre, 39-41 Park Place. If you have Internet access from another machine, this form may be downloaded from: <http://www.cardiff.ac.uk/3658>

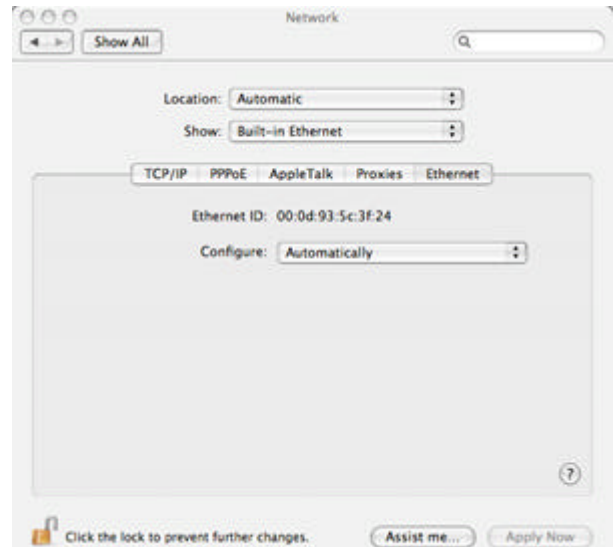
The **Permission to Connect** form requires several pieces of information, one being the Ethernet address of your Ethernet card. This information is shown in the **system profiler** under the **Network** subheading.

Configuring TCP/IP Control Panels

Mac OS X 10.4

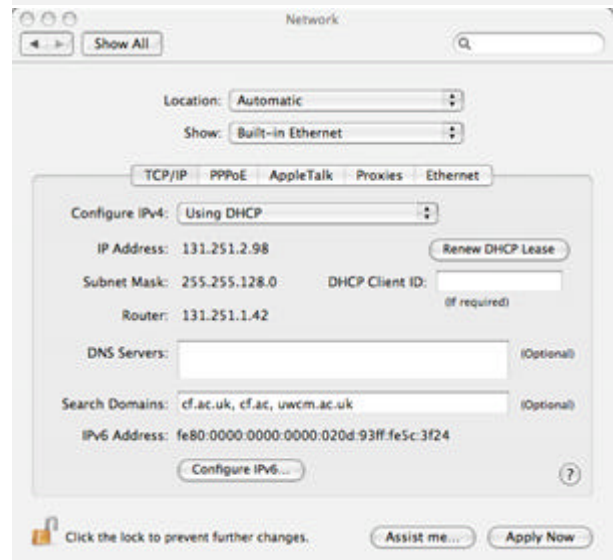
1. Select **System Preferences...** (under **Apple** menu)
or from the **Dock**, select the **System Preferences** icon
2. Select the **Network** icon
3. Set **Show:** to **Built-in Ethernet**
4. Select **Ethernet** tab

The required Ethernet address (Ethernet ID) is shown in the centre



Mac OS X 10.4

1. Select **System Preferences...** (under **Apple** menu)
or from the **Dock**, select the **System Preferences** icon
2. Select the **Network** icon
3. Set **Show:** to **Built-in Ethernet**
4. Select **TCP/IP** tab (default)
5. Set **Configure** to **Using DHCP**
(or Using **BootP**)
6. Enter the following in the **Search Domains** field:
cf.ac.uk, cf.ac, uwcm.ac.uk



For further help or information contact an Information Services library or the Computing Advisory Service.

Tel: 029 2087 4487.

Email: InsvConnect@Cardiff.ac.uk.

Web: <http://www.cardiff.ac.uk/schoolsanddivisions/divisions/insrv/help/guides/index.html>

Also available in alternative formats

ITC038-Q -2 / May 2006 /NR/DWW