

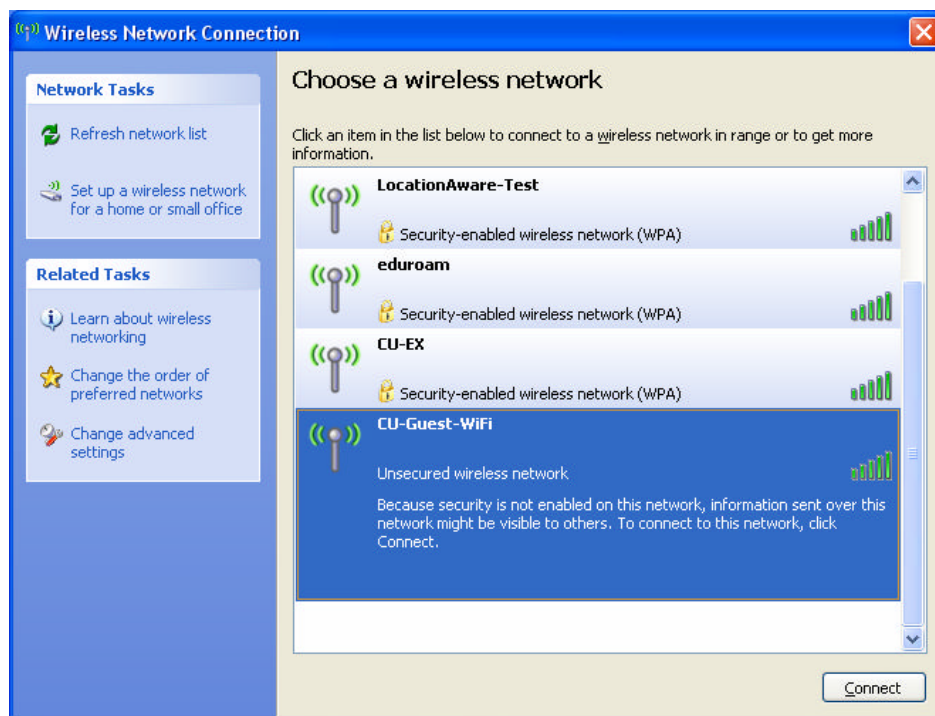
## Connecting to CU-Guest-WiFi using Windows XP

**Please note:** Cardiff University staff and students should not use this SSID. CU-WiFi and eduroam are for Cardiff University members.

1. Proceed to an area that has wireless coverage.
2. Turn on your computer
3. If disabled, turn on your wireless network card (Please refer to Manufacturers instructions if you are unsure of how to do this)
4. Double Click the bottom right Network icon that has a red X through it



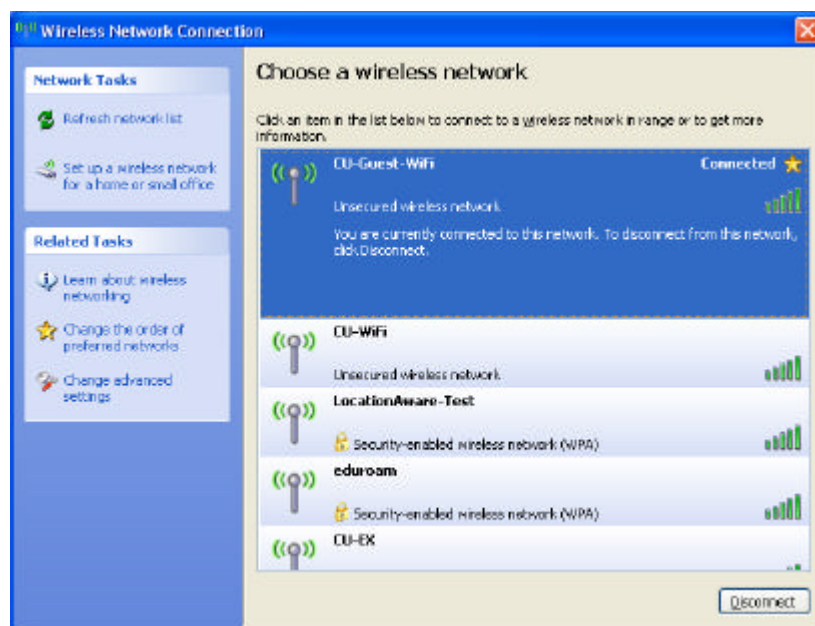
5. This should give a list of available network connections, choose CU-Guest-WiFi and click 'Connect'



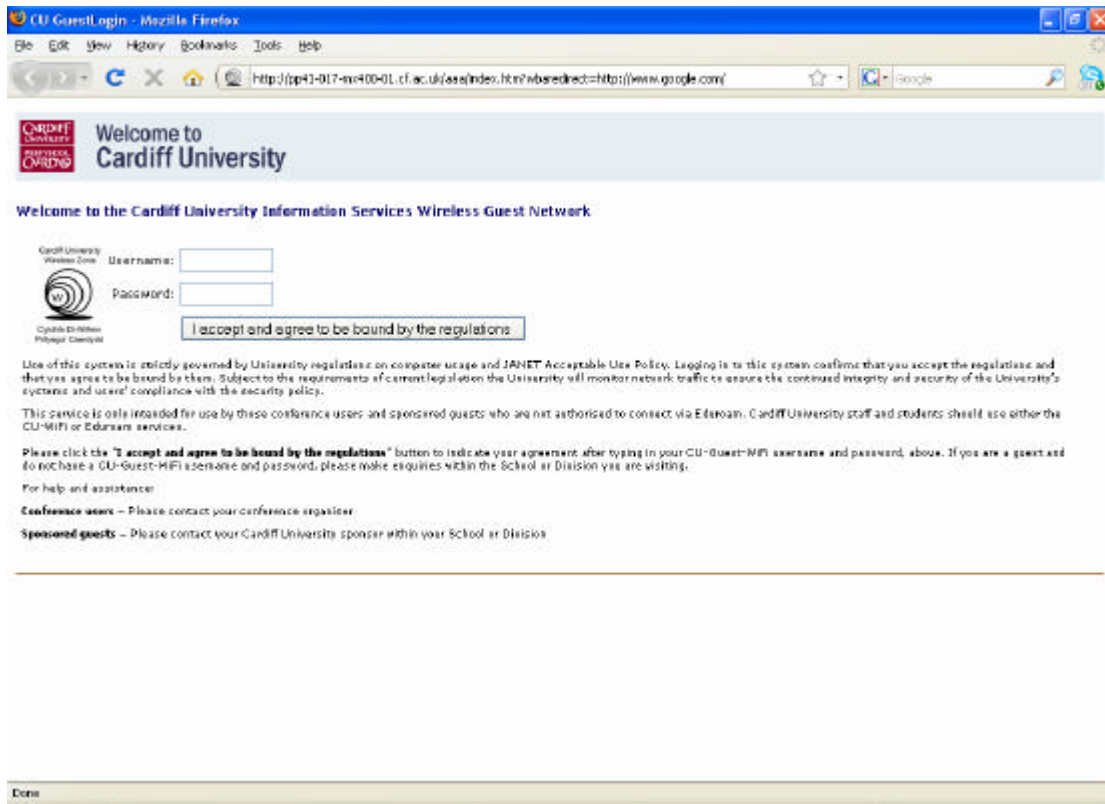
6. **Note:** You may receive a warning regarding network security. Click 'Continue Anyway'



7. Once the device has fully connected and received an IP address, the information should read 'Connected'



8. Open a browser window and try to navigate to a webpage. The wireless login page should appear automatically.



Once you have entered your **Guest Wireless** username and password, you should be connected to the CU-Guest-WiFi service.

**Please note** that this is a restricted service and is intended to give **limited** access to public web pages and web-based email only. Other programs and services may not work.

Last Update: 30 April 2009 by MOB