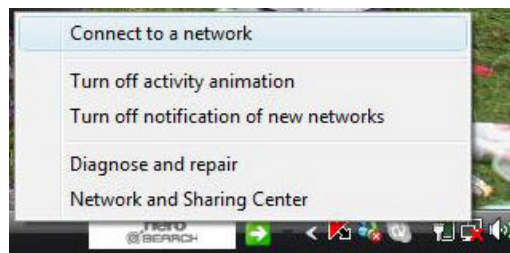


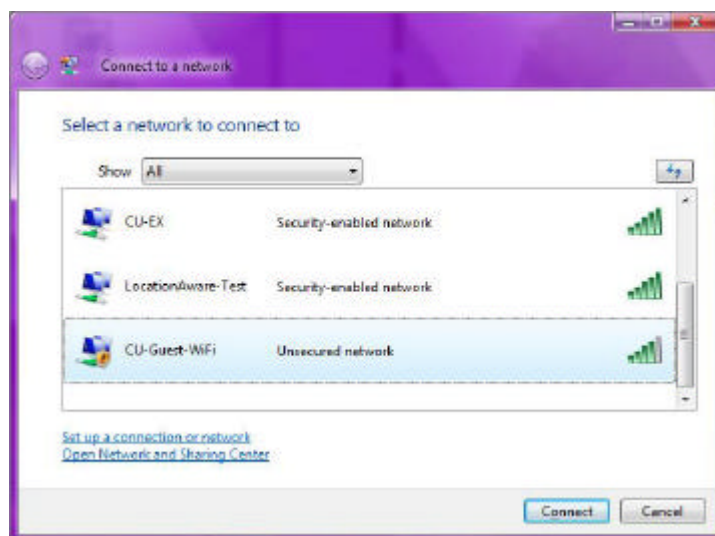
Connecting to CU-Guest-WiFi using Windows Vista

Please note: Cardiff University staff and students should not use this SSID. CU-WiFi and eduroam are for Cardiff University members.

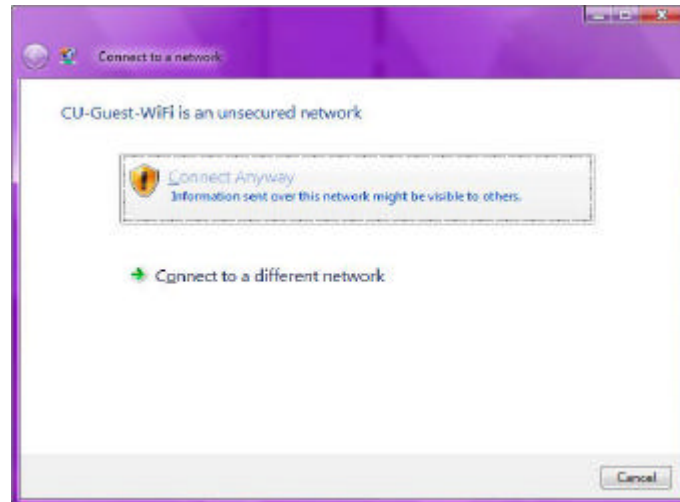
1. Proceed to an area that has wireless coverage.
2. Turn on your computer
3. If disabled, turn on your wireless network card (Please refer to Manufacturers instructions if you are unsure of how to do this)
4. Right-Click the Connection icon (at the lower right of the screen) and choose "Connect to a network"



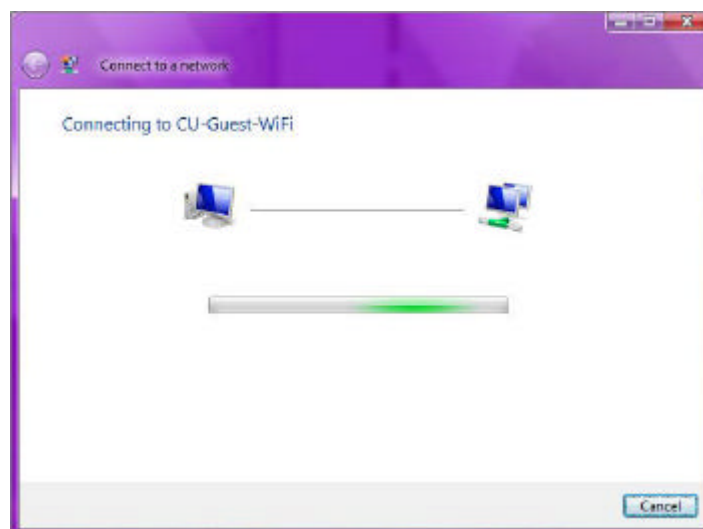
5. This should give a list of available network connections, choose CU-Guest-WiFi and click 'Connect'



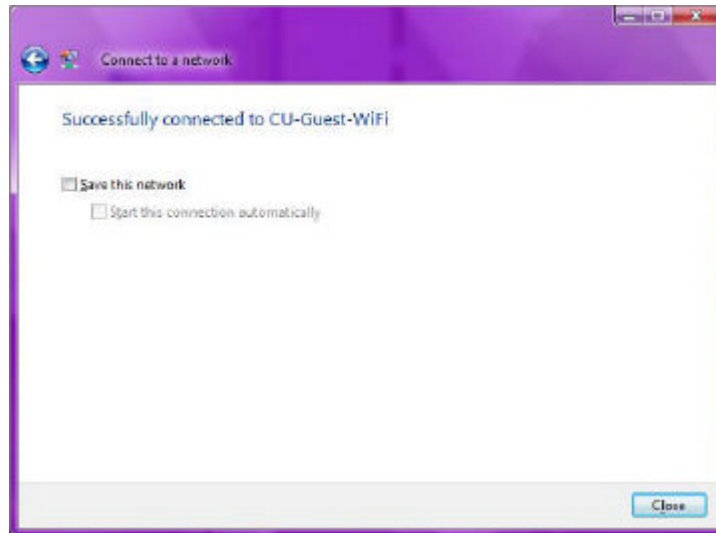
6. **Note:** You may receive a warning regarding network security. Click 'Connect Anyway'



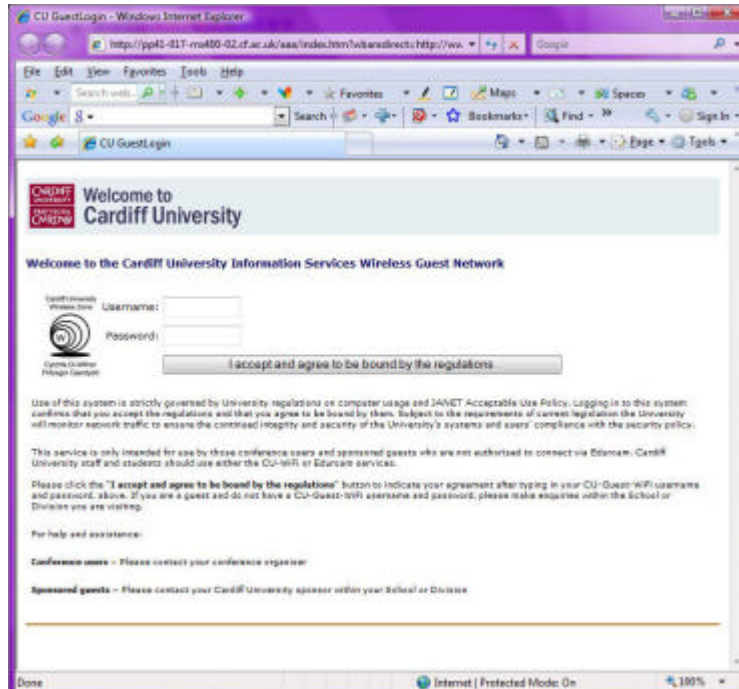
7. Your device should then attempt to connect to CU-Guest-WiFi



8. Once the device has received an IP address, it should read as connected



9. Open a browser and try to access a web page. You should be presented with the CU-Guest-WiFi login page.



Once you have entered your **Guest Wireless** username and password, you should be connected to the CU-Guest-WiFi service.

Please note that this is a restricted service and is intended to give **limited** access to public web pages and web-based email only. Other programs and services may not work.

Last Update: 30 April 2009 by MOB