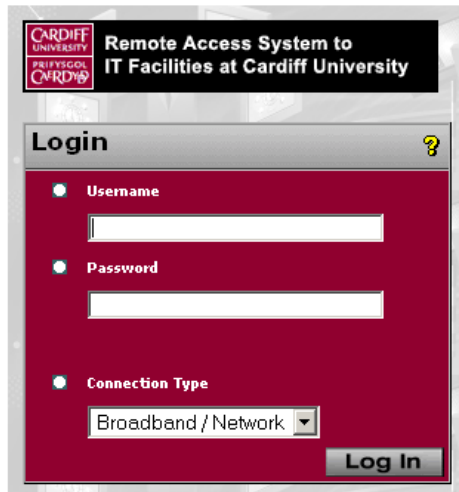


## Connecting to the All Wales Citrix Service from DGH Wyse Terminals



District General Hospital libraries are normally equipped with two Wyse terminals connected to a shared printer. The terminals allow access back to Cardiff University software and files from these locations. Note that they are very simple units and have no hard disc drive, floppy drive or CD ROM. All work may be saved to your personal network space (H drive).

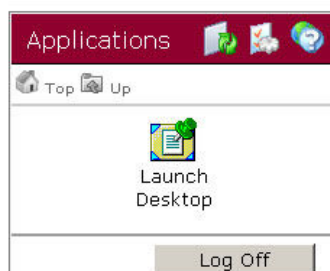


The screenshot shows a login window titled "Remote Access System to IT Facilities at Cardiff University". It features a "Login" header with a question mark icon. Below the header are three sections: "Username" with a text input field, "Password" with a text input field, and "Connection Type" with a dropdown menu currently set to "Broadband / Network". A "Log In" button is located at the bottom right of the form.

Access to the system is much the same as logging on to the network using a university computer.

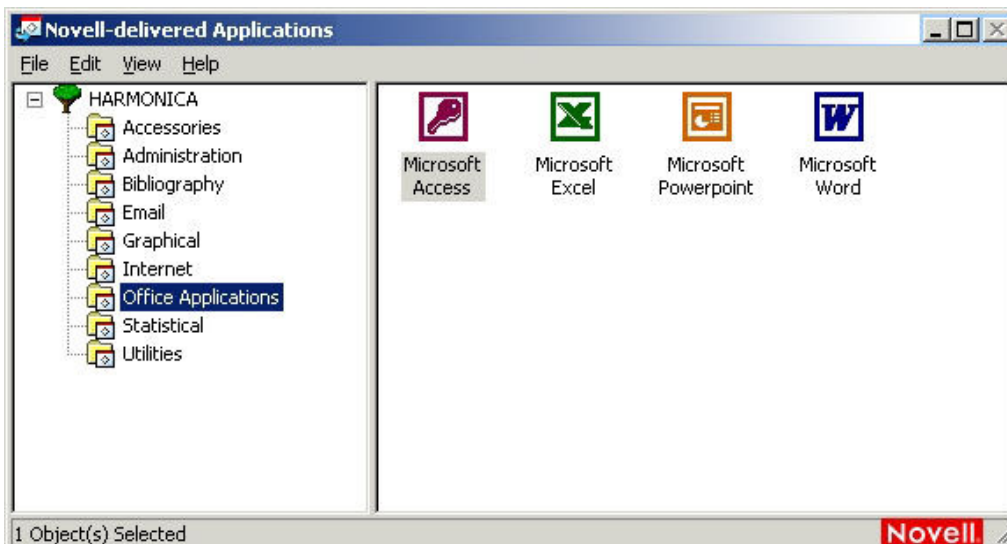
- Start the terminal by pressing the power button on the front underneath the screen.
- At the login screen type in your user name and password.

Once logged on double click the “Launch Desktop” icon to initiate a desktop environment with access to applications.



You will then gain access to the **Novell-delivered Applications** launcher with applications grouped into folders including:

- Accessories – Windows Explorer, Acrobat Reader, NotePad
- Bibliography – Endnote
- Email – Access via the Cardiff Portal in Internet Explorer
- Graphical – Paint Shop Pro 6
- Internet – Internet Explorer providing journal access
- Office Applications – Microsoft Word, Excel, PowerPoint & Access
- Statistical - SPSS 11



Printing to the shared printer is via a small switch box. Please save your work and ensure that you press the correct button on the switch box before attempting to print.

When you have finished using the terminal, go to the Start button and Log off.

If you are left handed, pressing Ctrl-Alt-End will take you to a screen (Winterm Connection Manager) from which you will be able to access the control panel button and change the mouse settings. When you exit the control panel, click on Connect to get back to where you were.